



THE BROADWAY, SW19
£360,000 LEASEHOLD

Winkworth



THE BROADWAY, SW19

Winkworth Wimbledon is delighted to present this bright and spacious one-bedroom split-level apartment, located on the first floor in the heart of Wimbledon Town.

Winkworth Wimbledon is delighted to present this bright and spacious one-bedroom split-level apartment, located on the first floor in the heart of Wimbledon Town. Just a 6-minute walk to Wimbledon Rail and Tube Station, this property offers excellent access to the main train line, tram line, underground, and bus services.

Refurbished completely in 2019, this apartment features:

A fully fitted kitchen with integrated appliances

A luxurious shower room with porcelain tiles

A bright and spacious full-width reception room

A large lobby area, ideal for use as a study or dining area

Engineered wooden floors throughout

Double glazed sash windows

Gas central heating

This charming apartment has its own private entrance, accessible from the rear behind the parade of shops, and is just a short stroll from the amenities of Wimbledon Town Centre. Additional benefits include a long lease and an Ad Hoc service charge.

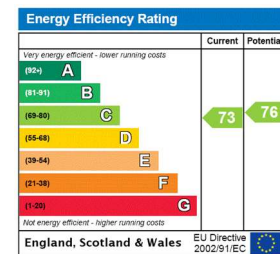
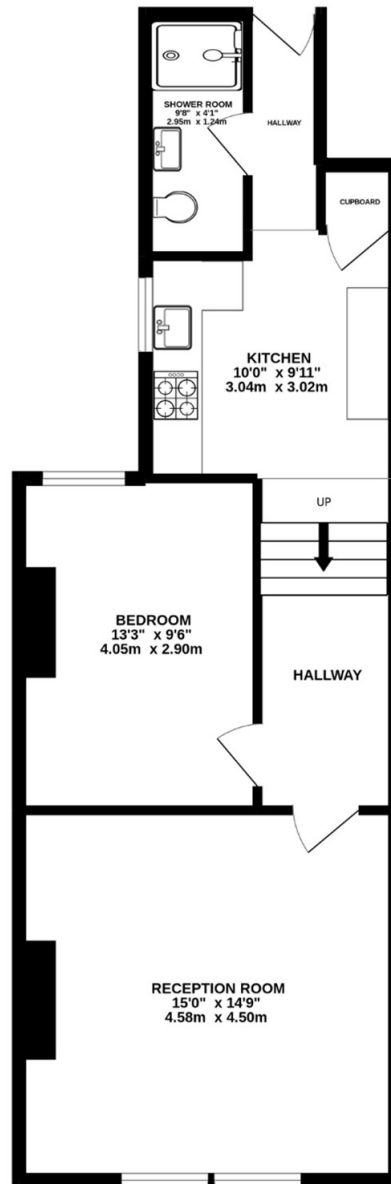
The property is surrounded by a wealth of local amenities, including shops, restaurants, bars, and several supermarkets. Nearby green spaces, sports facilities, and entertainment venues further enhance the vibrant lifestyle that this fantastic location offers.

Council Tax Band C

EPC Rating C







Wimbledon | 02037614040 | wimbledon@winkworth.co.uk

winkworth.co.uk

Winkworth wishes to inform prospective buyers and tenants that these particulars are a guide and act as information only. All our details are given in good faith and believed to be correct at the time of printing but they don't form part of an offer or contract. No Winkworth employee has authority to make or give any representation or warranty in relation to this property. All fixtures and fittings, whether fitted or not are deemed removable by the vendor unless stated otherwise and room sizes are measured between internal wall surfaces, including furnishings.

