



LORDSHIP LANE, EAST DULWICH, SE22  
£1,250,000 FREEHOLD

## A SPACIOUS FOUR DOUBLE BEDROOM VICTORIAN TOWNHOUSE OFFERED TO THE MARKET CHAIN FREE.

Dulwich | 020 8299 2722 | [dulwich@winkworth.co.uk](mailto:dulwich@winkworth.co.uk)

Tenure Freehold | Council Tax Band D – London Borough of Southwark

**Winkworth**

[winkworth.co.uk](http://winkworth.co.uk)

See things differently



## DESCRIPTION:

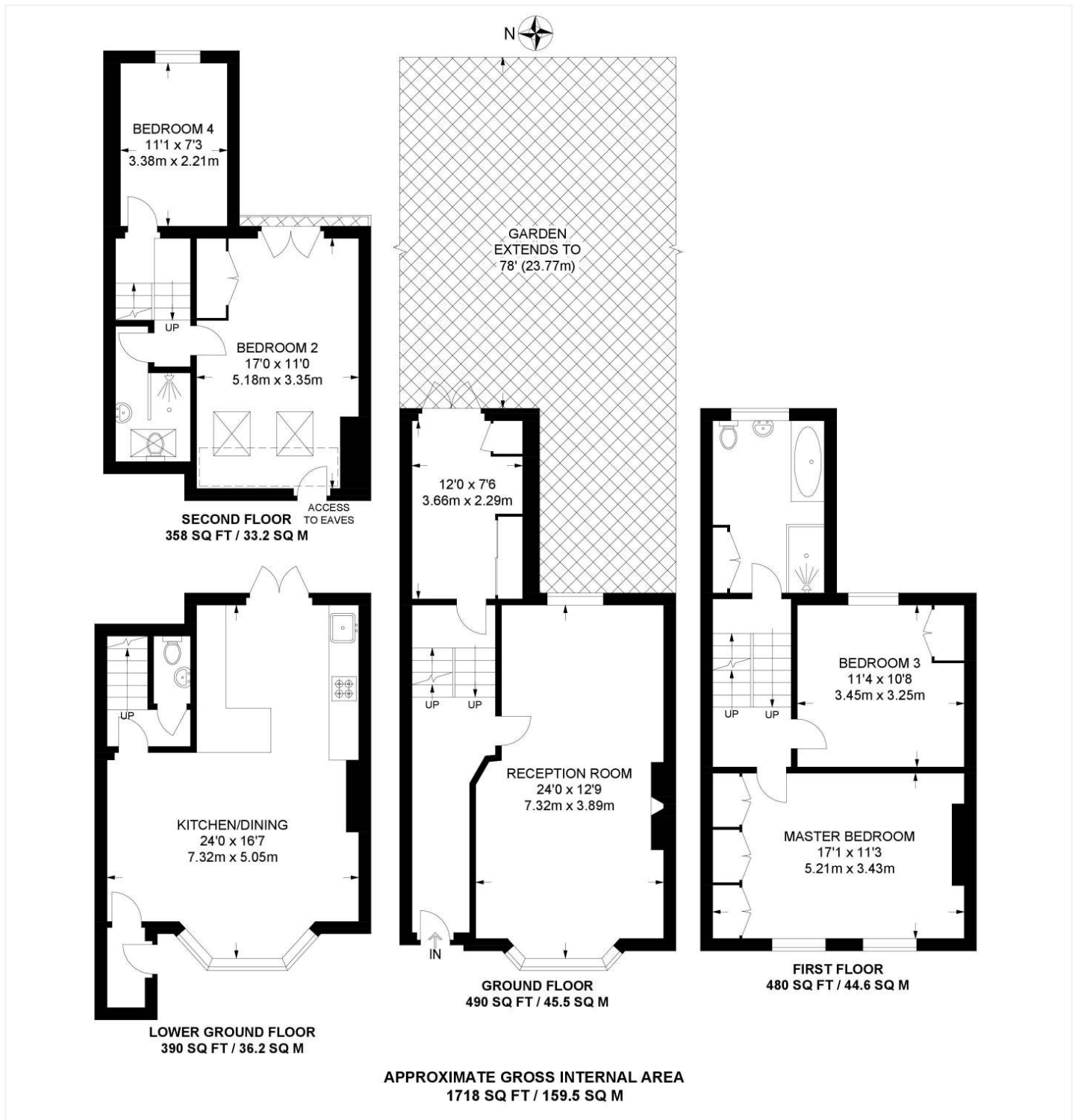
This spacious townhouse is offered to the market chain free. The property is spread over four floors, comprising on the raised ground floor a spacious double reception, complete with high ceilings, original fireplace and surround, and engineered wood flooring. Steps lead down to a built-in home office, with fixed desk, utility area and French doors leading out to an impressively spacious, large garden to rear. The lower ground floor comprises an open plan kitchen diner (including separate WC) its own entrance, bike storage, breakfast bar and built in appliances. The kitchen also has its own access to the garden. The first floor comprises two spacious double bedrooms, the primary double to front boasts built in wardrobes. There is a family bathroom situated to rear, boasting a bath and walk in shower. The loft has been converted to allow two further bedrooms and a further shower room. The location offers fantastic access to everything SE22 has to offer. Green open spaces can be found within a short stroll to either Dulwich Park, Goose Green or Peckham Rye Park. Shops, bars and restaurants can be found on Lordship Lane, the Village or a short bus to Forest Hill or Peckham. School catchments are in abundance with Charter North and Charter East for secondary, Harris for primary, Heber or Goodrich. This is a wonderful home in a fantastic location and early viewings are highly advised.

## AT A GLANCE

- Four Double Bedrooms
- Victorian Townhouse
- Large Reception Room & Built-In Home Office
- Spacious Kitchen with Breakfast Bar and Dining Area
- Two Bathrooms and a Downstairs WC
- School Catchment Area Including The North Dulwich Charter School







This floorplan is for illustration purposes only and is not to scale. The position and size of doors, windows, appliances and other features are approximate.

## EPC TO BE ADDED

Dulwich | 020 8299 2722 | [dulwich@winkworth.co.uk](mailto:dulwich@winkworth.co.uk)



[winkworth.co.uk](http://winkworth.co.uk)

See things differently

Winkworth wishes to inform prospective buyers and tenants that these particulars are a guide and act as information only. All our details are given in good faith and believed to be correct at the time of printing but they don't form part of an offer or contract. No Winkworth employee has authority to make or give any representation or warranty in relation to this property. All fixtures and fittings, whether fitted or not are deemed removable by the vendor unless stated otherwise and room sizes are measured between internal wall surfaces, including furnishings.