



CHICHELE ROAD, NW2  
**£2,000 PER MONTH PART FURNISHED**

**PRESENTING THIS STUNNING TWO BEDROOM  
APARTMENT TO THE LETTINGS MARKET.**

Kensal & Queens Park | 0208 960 4947 | [kensalrise@winkworth.co.uk](mailto:kensalrise@winkworth.co.uk)

**Winkworth**

for every step...

[winkworth.co.uk](http://winkworth.co.uk)



## DESCRIPTION:

Presenting this stunning two bedroom apartment to the lettings market.

Situated within a well maintained prestigious mansion block in the heart of Willesden Green, the property is ideally located within a few minutes walk of the jubilee line Zone 2 as well as 24Hr bus routes.

Comprising of one double bedroom, one spacious single bedroom, a stunning reception with gorgeous high ceilings, recently refurbished bathroom and large eat in kitchen.

The apartment benefits from an allocated parking space, hard wooden flooring throughout and a recent high spec refurbishment.

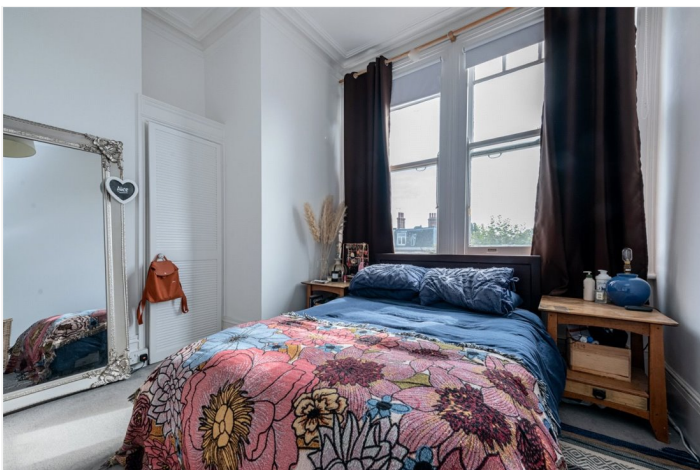
The property is unfurnished except a double bed in the larger bedroom.

Council tax - (Band C)

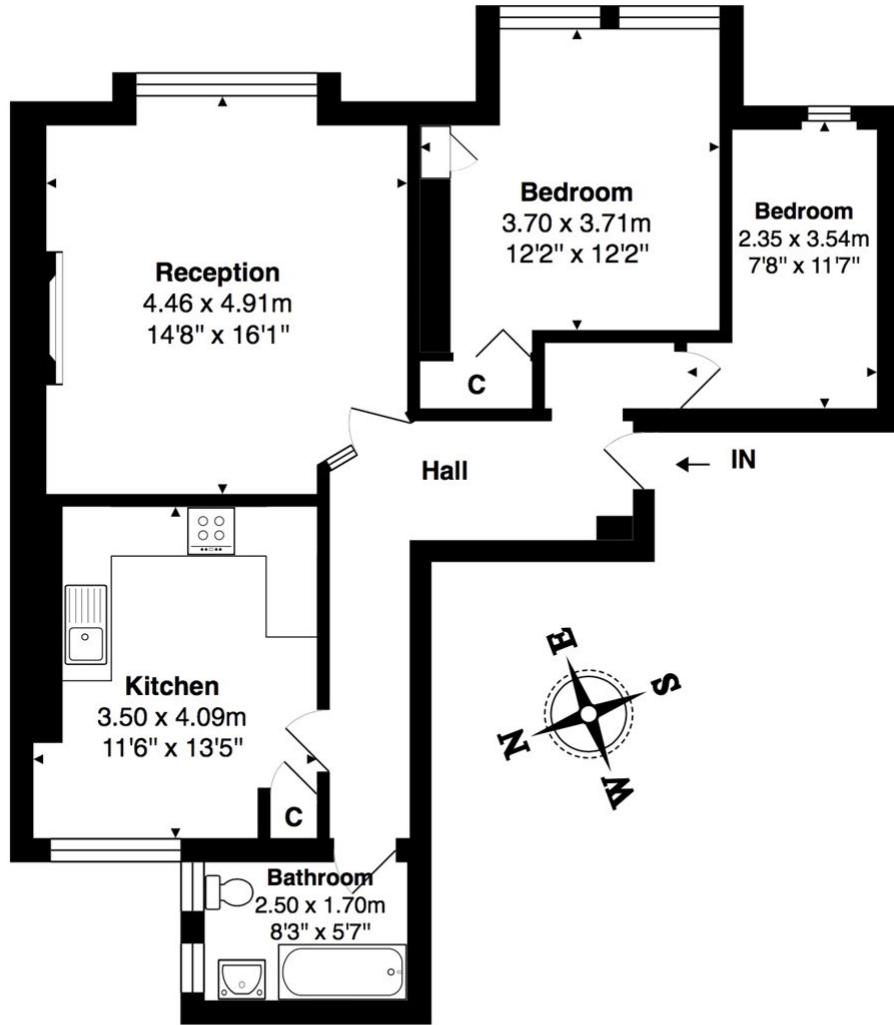
Ward - Mapesbury

## AT A GLANCE

- Available 04/10/23
- Two Bedrooms
- Stunning Building
- High Ceilings
- Separate Kitchen
- Unfurnished Except Double Bed In Larger Bedroom
- Great location - moments from Willesden Green

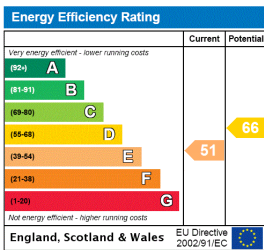






**Total Area: 73.6 m<sup>2</sup> ... 793 ft<sup>2</sup>**  
 All measurements are approximate and for display purposes only

This floorplan is for illustration purposes only and is not to scale. The position and size of doors, windows, appliances and other features are approximate.



Kensal & Queens Park | 0208 960 4947 | kensalrise@winkworth.co.uk



for every step...

winkworth.co.uk

winkworth wishes to inform prospective buyers and tenants that these particulars are a guide and act as information only. All our details are given in good faith and believed to be correct at the time of printing but they don't form part of an offer or contract. No Winkworth employee has authority to make or give any representation or warranty in relation to this property. All fixtures and fittings, whether fitted or not are deemed removable by the vendor unless stated otherwise and room sizes are measured between internal wall surfaces, including furnishings.