



THE DENFORD LEN PICK WAY, BOURNE.
£205,000 FREEHOLD





THE DENFORD LEN PICK WAY, BOURNE.

BRAND NEW CALL FOR MORE DETAILS! £10,250 SAVINGS
This semi-detached home has an open plan living area with a modern kitchen, a comfortable lounge and French doors to the garden. Upstairs, you'll find two double bedrooms, your second with built in storage and a modern bathroom.

This home includes a range of energy-efficient features including solar PV panels and more.

Photos are of the Denford design but not necessarily the plot for sale.

1

Bathroom - 1840mm x 1920mm (6'0" x 6'3")

Bedroom 1 - 3943mm x 2412mm (12'11" x 7'10")

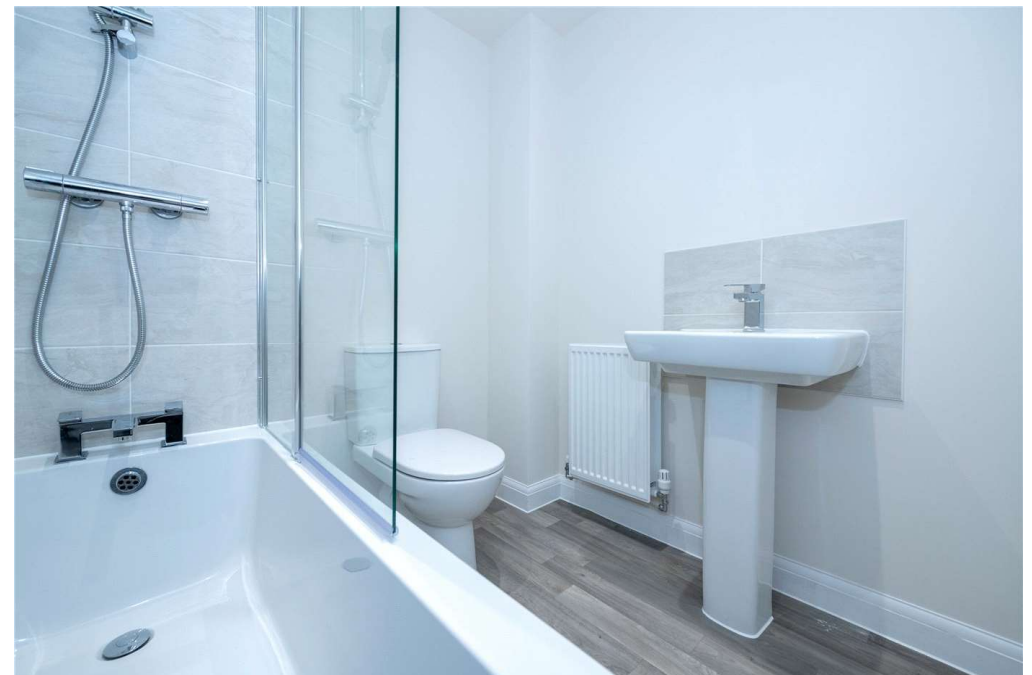
Bedroom 2 - 3943mm x 2702mm (12'11" x 8'10")

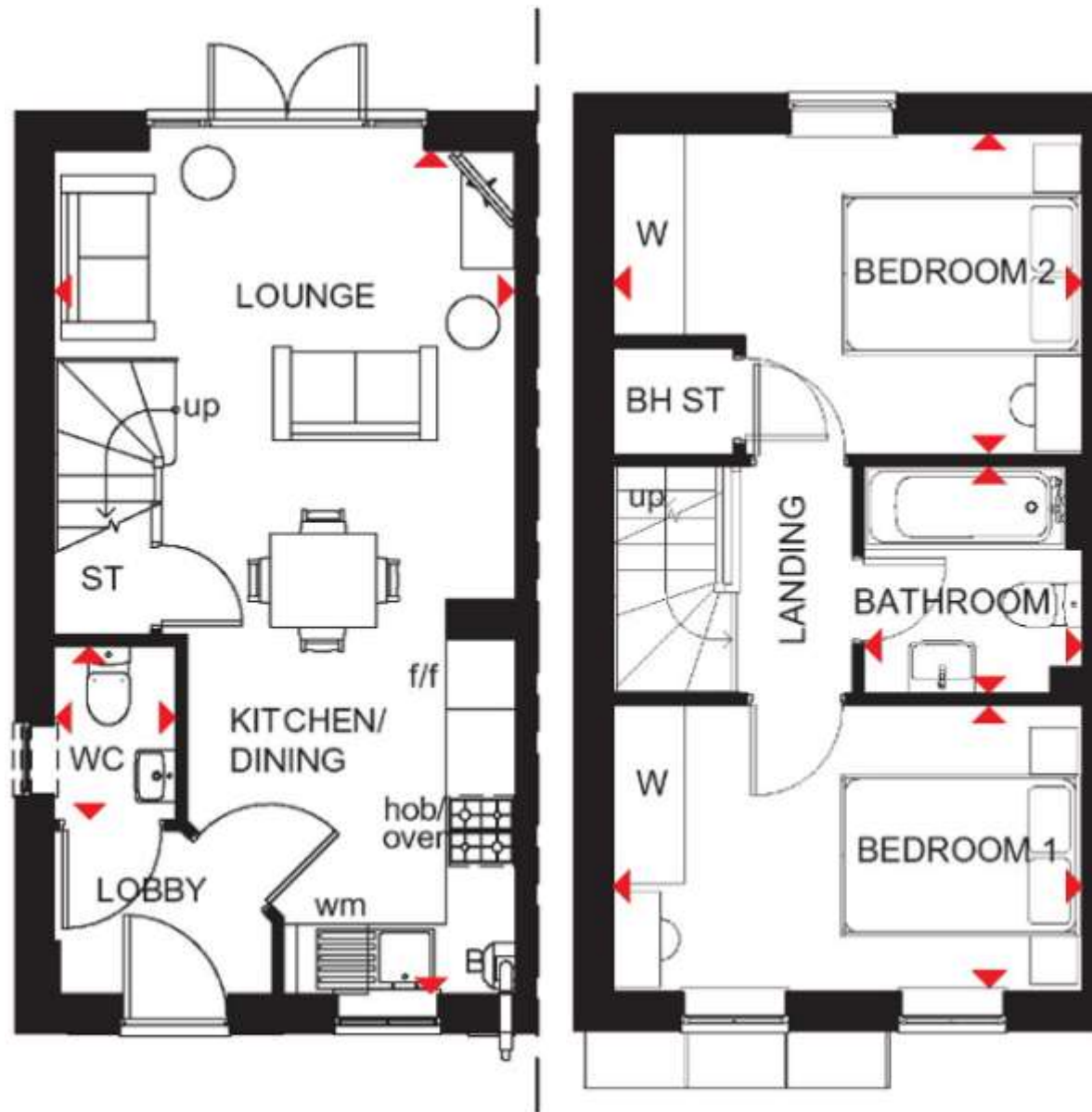
G

Kitchen / Lounge / Dining - 3943mm x 7210mm (12'11" x 23'7")

WC - 1040mm x 1490mm (3'4" x 4'10")







Bourne | 01778392807 | bourne@winkworth.co.uk

winkworth.co.uk

Winkworth wishes to inform prospective buyers and tenants that these particulars are a guide and act as information only. All our details are given in good faith and believed to be correct at the time of printing but they don't form part of an offer or contract. No Winkworth employee has authority to make or give any representation or warranty in relation to this property. All fixtures and fittings, whether fitted or not are deemed removable by the vendor unless stated otherwise and room sizes are measured between internal wall surfaces, including furnishings.

