



CREMER STREET, LONDON, E2
£815,000 LEASEHOLD

AN OUTSTANDING TWO-BEDROOM TWO-BATHROOM SECOND FLOOR APARTMENT IN HOXTON

Hackney | 020 8986 4216 | hackney@winkworth.co.uk

Winkworth

winkworth.co.uk

See things differently



DESCRIPTION:

This extraordinary and inspiring two-bedroom, two-bathroom spans 860sqft and is set on the second floor of this striking industrial-style newly created development. From the moment you enter the building you will be captivated by the attention to detail and commitment to the very best in high-quality design with this striking lateral apartment delivering the finest levels of craftsmanship and luxury, resulting in tranquil and luxurious living in the heart of this thriving district.

The property enjoys lift access to the second floor and showcases a number of striking industrial-style features with full height contemporary door frames, lime-washed wooden flooring, a series of clever and smart lighting features and beautiful vast triple glazed windows and sliding doors that allow the natural light to flood in. The architects behind these creations have invested exhaustively in a series of bespoke features, providing superior open-plan kitchen areas with islands and extractor hood, neolith work surfaces, amazing bathrooms with colour-matched tiles and CP Hart sanitary-ware and small private balconies beyond the sliding doors. Both bedrooms enjoy bespoke fitted wardrobes with installed LG televisions, underfloor heating and blind fittings for those quieter moments at home.

Winkworth

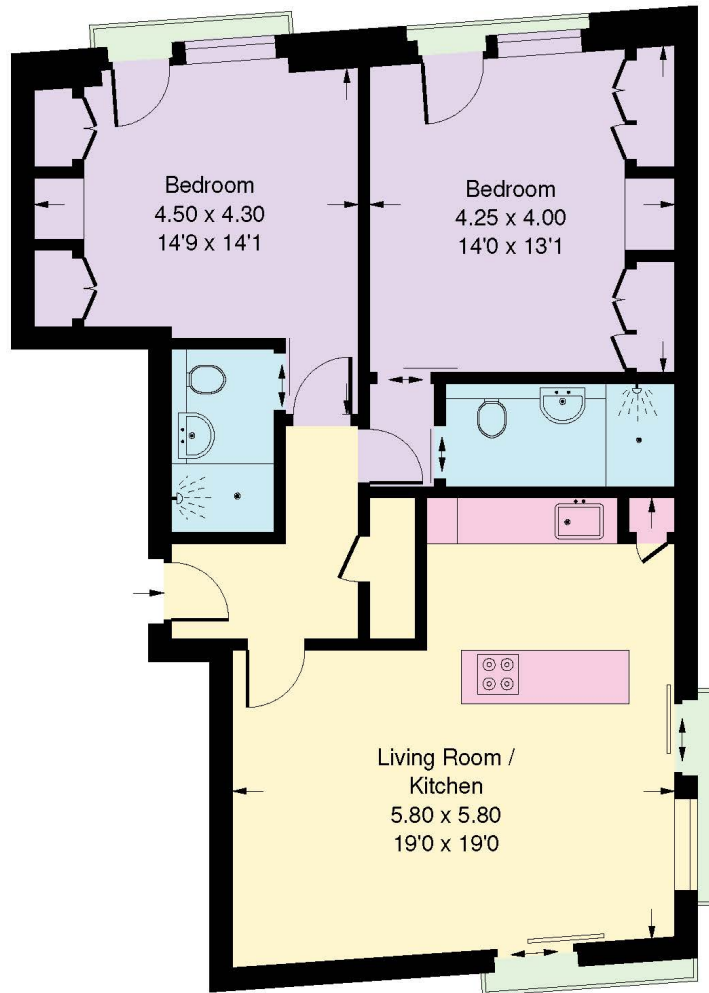


Winkworth

Cremer Street, E2

Approx Gross Internal Area
79.9 sq m / 860 sq ft

Flat 2



Whilst every attempt has been made to ensure the accuracy of the floor plan, measurements are approximate and not to scale. No guarantee is given on the total square footage of the property quoted on the plan. Figures given are for guidance. Plan is for illustration purposes only, not to be used for valuations.

This floorplan is for illustration purposes only and is not to scale. The position and size of doors, windows, appliances and other features are approximate.

Energy Efficiency Rating		Current	Potential
Very energy efficient - lower running costs			
(92)	A		
(81-91)	B	84	84
(69-80)	C		
(55-68)	D		
(39-54)	E		
(21-38)	F		
(1-20)	G		
Not energy efficient - higher running costs			
England, Scotland & Wales		EU Directive 2002/91/EC	

Hackney | 020 8986 4216 | hackney@winkworth.co.uk



winkworth.co.uk

See things differently

Winkworth wishes to inform prospective buyers and tenants that these particulars are a guide and act as information only. All our details are given in good faith and believed to be correct at the time of printing but they don't form part of an offer or contract. No Winkworth employee has authority to make or give any representation or warranty in relation to this property. All fixtures and fittings, whether fitted or not are deemed removable by the vendor unless stated otherwise and room sizes are measured between internal wall surfaces, including furnishings.