



**THE WILLOWS, READING, BERKSHIRE, RG4 8BD  
£1,100 PER MONTH UNFURNISHED**

**ONE BEDROOM FIRST FLOOR MAISONETTE  
IN CAVERSHAM WITH OFF ROAD PARKING  
SPACE. AVAILABLE 16<sup>th</sup> SEPTEMBER.**

Reading | 0118 4022 300 | [reading@winkworth.co.uk](mailto:reading@winkworth.co.uk)

**Winkworth**

for every step...

[winkworth.co.uk](http://winkworth.co.uk)

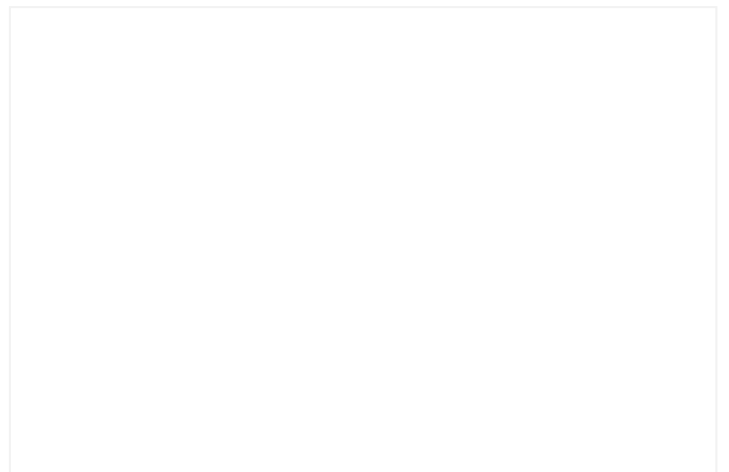


### DESCRIPTION:

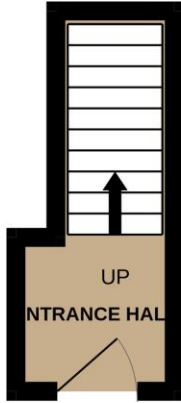
One bedroom first floor maisonette located in the sought after area of Caversham, close to Reading town centre. The property comprises spacious living room, separate kitchen, one double bedroom and a three piece bathroom. The property benefits from gas central heating and off road parking space. Available 16th September 2024. Unfurnished.

### AT A GLANCE

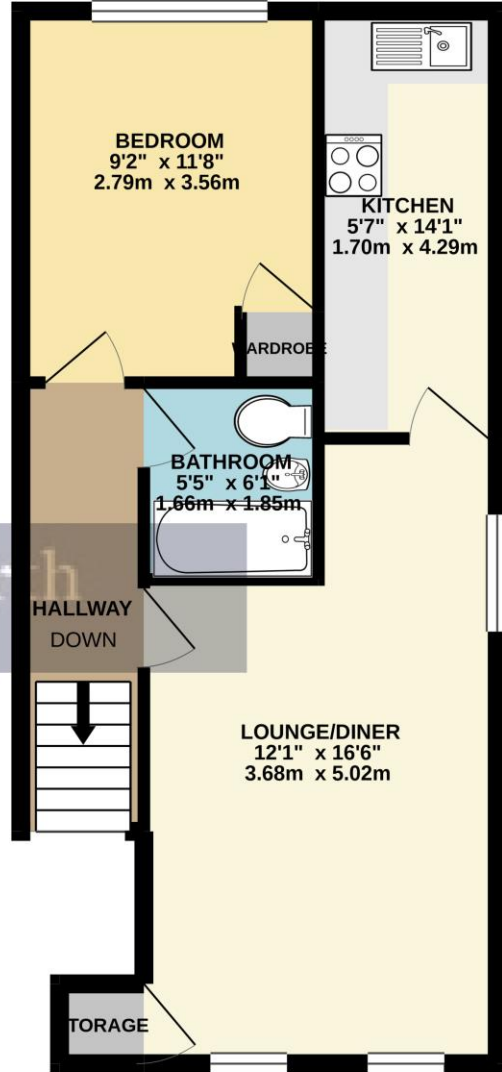
- One bedroom maisonette
- Located in Caversham
- First floor
- Off road parking
- Council tax band B
- Available 16th September
- Unfurnished



GROUND FLOOR  
50 sq.ft. (4.6 sq.m.) approx.



FIRST FLOOR  
466 sq.ft. (43.3 sq.m.) approx.



TOTAL FLOOR AREA : 516 sq.ft. (47.9 sq.m.) approx.

Whilst every attempt has been made to ensure the accuracy of the floorplan contained here, measurements of doors, windows, rooms and any other items are approximate and no responsibility is taken for any error, omission or mis-statement. This plan is for illustrative purposes only and should be used as such by any prospective purchaser. The services, systems and appliances shown have not been tested and no guarantee as to their operability or efficiency can be given.  
Made with Metropix ©2021

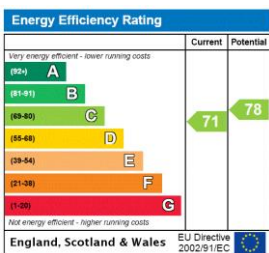
This floorplan is for illustration purposes only and is not to scale. The position and size of doors, windows, appliances and other features are approximate.

Deposit: £1,269.23

Holding Deposit: £253.84

Council Tax Band: B

Where no figures are shown, we have been unable to ascertain the information. All figures that are shown were correct at the time of printing.



Reading | 0118 4022 300 | reading@winkworth.co.uk



for every step...

winkworth.co.uk

Winkworth wishes to inform prospective buyers and tenants that these particulars are a guide and act as information only. All our details are given in good faith and believed to be correct at the time of printing but they don't form part of an offer or contract. No Winkworth employee has authority to make or give any representation or warranty in relation to this property. All fixtures and fittings, whether fitted or not are deemed removable by the vendor unless stated otherwise and room sizes are measured between internal wall surfaces, including furnishings.