



Gunter Grove, West Chelsea, London, SW10

£550 per week* / £2,383.33 per month – Part-Furnished or Unfurnished

A beautifully renovated one bedroom flat with patio and private entrance.

1 Bedroom | 1 Reception Room | 1 Bathroom | Patio Garden | Lower Ground Floor Flat | 521 Approx sq ft | EPC: C

APPLICANT FEES MAY BE APPLICABLE
HOLDING DEPOSIT OF 1 WEEK'S RENT
SECURITY DEPOSIT OF 5 WEEKS' RENT

Winkworth

winkworth.co.uk

for every step...



DESCRIPTION

This stylish property is located on the Lower Ground Floor of an attractive period building and consists of a spacious reception room, contemporary kitchen, well-proportioned bedroom and modern bathroom with separate bath and walk-in shower. The flat benefits from wooden flooring throughout and a private terrace. The flat is available from the beginning of February on an unfurnished or part-furnished basis.




ACCOMMODATION

1 Bedroom, 1 Reception Room,
1 Bathroom, Patio Garden,
Lower Ground Floor Flat,
Part-Furnished or Unfurnished,
521 Approx Sq ft

COUNCIL TAX BAND

Band D



Energy Efficiency Rating		Current	Potential
Very energy efficient - lower running costs			
(92+)	A		
(81-91)	B		
(69-80)	C	72	78
(55-68)	D		
(39-54)	E		
(21-38)	F		
(1-20)	G		
Not energy efficient - higher running costs			
England, Scotland & Wales		EU Directive 2002/91/EC 	

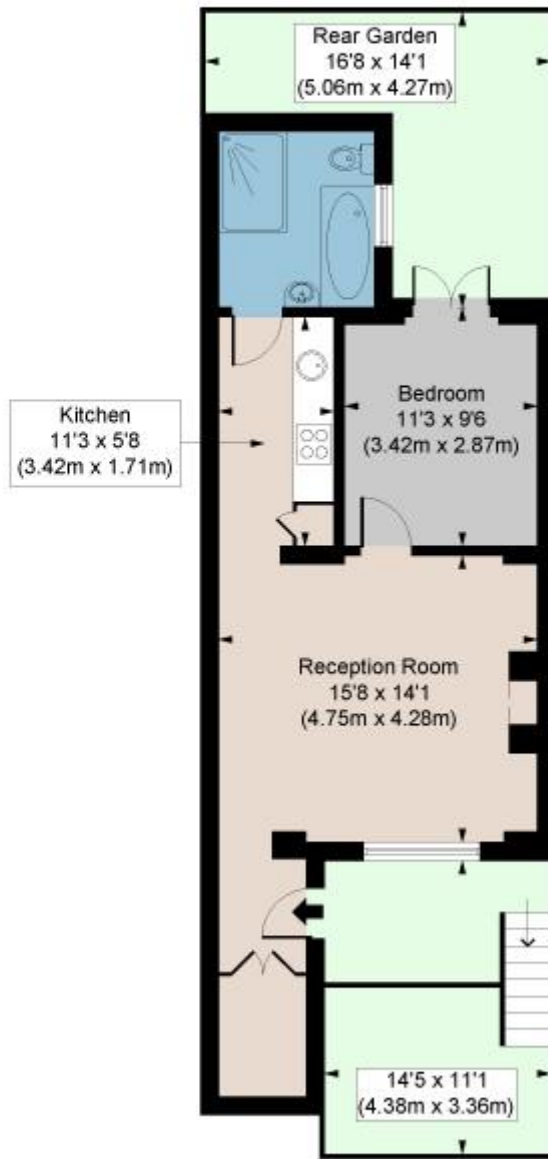


GUNTER GROVE SW10

APPROX. GROSS INTERNAL AREA *
521 Ft² - 48.43 M²

Illustration For Identification Only, Not to Scale
All Calculations include Any/All Areas Under 1.5m Head Height.

* As Defined by RICS - Code of Measuring Practice



LOWER GROUND FLOOR

Floorplan is for illustrative purposes only and is not to scale.
Every attempt has been made to ensure the accuracy of the floorplan shown, however all measurements, fixtures, fittings and data shown are an approximate interpretation for illustrative purposes only.
Liability for errors, omissions or mis-statement through negligence or otherwise is hereby excluded.

CP CREATIVE
PROPERTY MARKETING

This floorplan is for illustration purposes only and is not to scale. The position and size of doors, windows, appliances and other features are approximate.

**Please note, the rent cannot be paid on a weekly basis*

South Kensington Lettings | 020 7370 6767 | lettings.southken@winkworth.co.uk

Winkworth

winkworth.co.uk

for every step...

Winkworth wishes to inform prospective buyers and tenants that these particulars are a guide and act as information only. All our details are given in good faith and believed to be correct at the time of printing but they don't form part of an offer or contract. No Winkworth employee has authority to make or give any representation or warranty in relation to this property. All fixtures and fittings, whether fitted or not are deemed removable by the vendor unless stated otherwise and room sizes are measured between internal wall surfaces, including furnishings.