

GASCONY AVENUE, NW6 £1,950 PER WEEK

We are delighted to be able to offer this stunning and beautifully designed, five-bedroom, three-bathroom Victorian terraced family home, with over 2,600 sq. ft of internal living space, split over an area of four floors. This spectacular period property has been completely reconfigured to ensure that every single detail has been considered and executed with precision, resulting in a magnificent home that mixes character features with a contemporary and traditional interior design. Gascony Avenue is conveniently situated just off West End Lane, taking advantage of its vast array of artisan shops and amenities as well as unrivalled transport links, including Thameslink, Overground and Underground train lines (Jubilee Line).

Master Bedroom with En-Suite Bathroom | Four Further Bedrooms (Two En-Suites) | Two En-Suite Shower Rooms | Family Bathroom | Guest WC | Utility Room | Open Plan Kitchen/Dining Room | Reception Room | Cellar | Garden

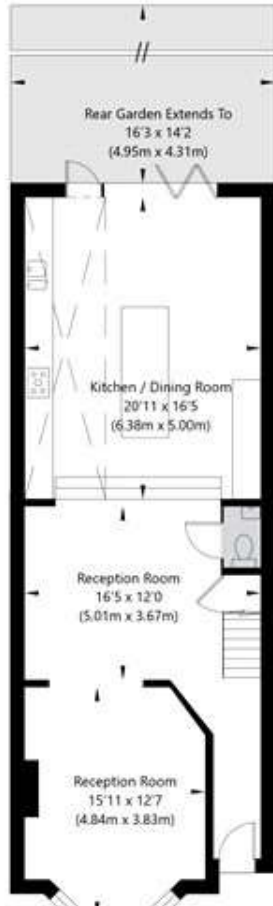
Winkworth

for every step...

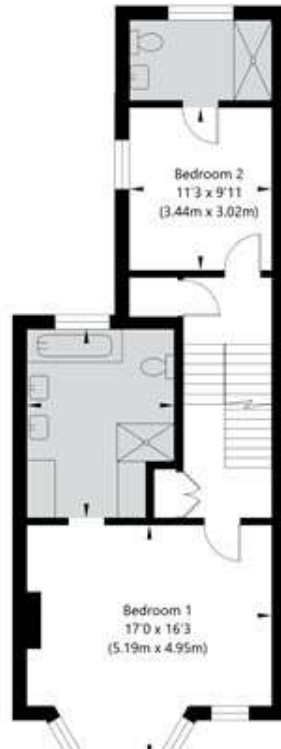
winkworth.co.uk/west-hampstead



Gascony Avenue, London NW6 4ND



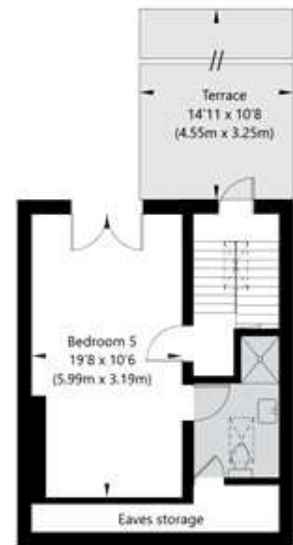
Raised Ground Floor
GROSS INTERNAL FLOOR AREA
APPROX. 73.16 SQ M / 787 SQ FT



First Floor
GROSS INTERNAL FLOOR AREA
APPROX. 63.45 SQ M / 683 SQ FT



Second Floor
GROSS INTERNAL FLOOR AREA
APPROX. 55.05 SQ M / 593 SQ FT



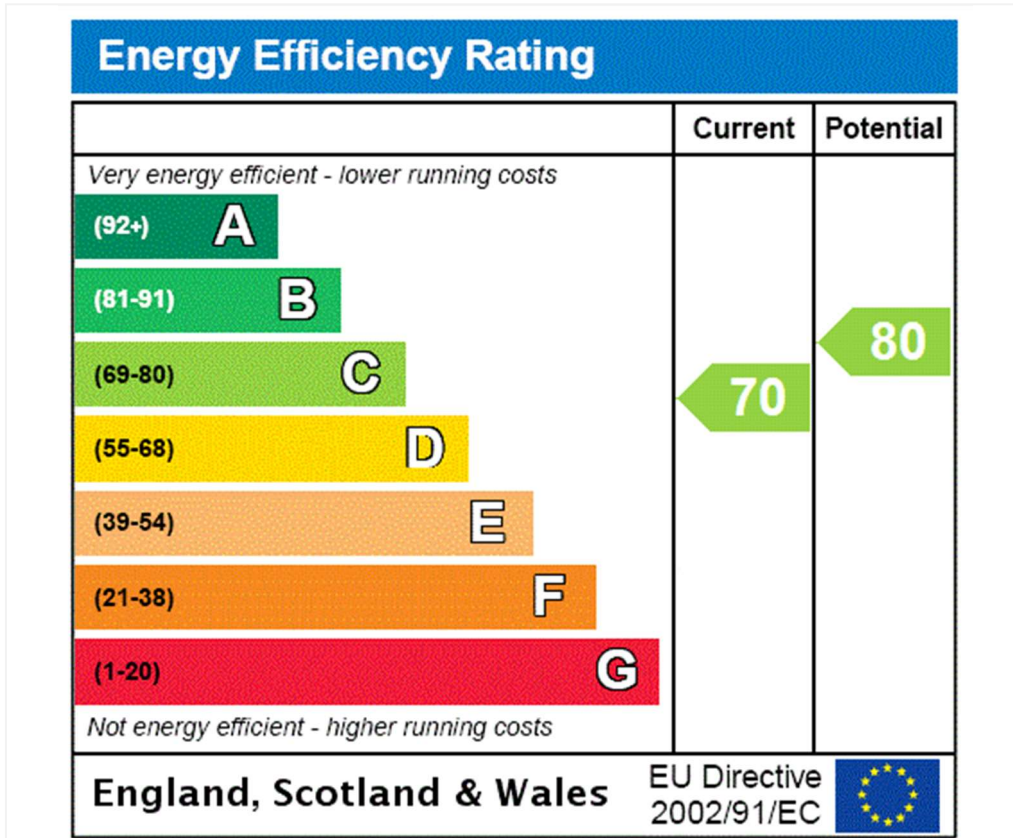
Top Floor
GROSS INTERNAL FLOOR AREA
APPROX. 35.23 SQ M / 379 SQ FT



Cellar
GROSS INTERNAL FLOOR AREA
APPROX. 16.8 SQ M / 181 SQ FT

APPROXIMATE GROSS INTERNAL FLOOR AREA 243.69 SQ M / 2623 SQ FT

THIS FLOOR PLAN IS FOR ILLUSTRATIVE PURPOSES ONLY AND SHOULD BE USED FOR THIS PURPOSE BY PROSPECTIVE APPLICANTS AS ITS NOT TO SCALE.



Tenancy Deposit: £11,700.00

Holding Deposit: 1 weeks rent where the rent is up to £50,000 per annum, 2 weeks rent where the rent is over £50,000 per annum

Council Tax Band: G

Where no figures are shown, we have been unable to ascertain the information. All figures that are shown were correct at the time of printing.

Where no figures are shown, we have been unable to ascertain the information. All figures that are shown were correct at the time of printing.

These particulars are not an offer or contract, nor part of one. You should not rely on statements by Winkworth in the particulars or by word of mouth or in writing "information" as being factually accurate about the property, its condition or its value. Winkworth does not have any authority to make any representations about the property, and accordingly any information given is entirely without responsibility on the part of the agents, seller(s) or lessor(s). These particulars are prepared on the basis of the information supplied by our client and are a rough guide for information only. The photographs show only certain parts of the property. We are not able to check all of the information and therefore are unable to guarantee accuracy. All interested parties are therefore advised to undertake all necessary inspections and checks that they deem appropriate. Where displayed, the square footage is taken from the floor plans, which are created by an independent supplier. These measurements are approximate and included for illustrative purposes only. The measurements may vary. Winkworth does not make any representation as to the accuracy of these measurements and you should seek to verify them for yourself. Winkworth accept no liability for any loss you may suffer if you rely on these measurements. All fixtures and fittings, whether fitted or not are deemed removable by the vendor unless stated. Any reference to alterations to, or use of, any part of the property does not mean that any necessary planning, building regulations or other consent has been obtained. Amenities and appliances have not been tested



West Hampstead | 142 West End Lane, London, NW6 1SD | 020 7483 7602 |

westhampstead@winkworth.co.uk

for every step...

winkworth.co.uk/west-hampstead

Winkworth wishes to inform prospective buyers and tenants that these particulars are a guide and act as information only. All our details are given in good faith and believed to be correct at the time of printing but they don't form part of an offer or contract. No Winkworth employee has authority to make or give any representation or warranty in relation to this property. All fixtures and fittings, whether fitted or not are deemed removable by the vendor unless stated otherwise and room sizes are measured between internal wall surfaces, including furnishings.