



WESTON ROAD, LONDON, W4
£2,200 PER MONTH PART FURNISHED

SPACIOUS TWO-BEDROOM SPLIT LEVEL APARTMENT ON PRETTY TREE LINED STREET.

Chiswick | 020 8994 7096 | chiswick@winkworth.co.uk

Winkworth

for every step...

winkworth.co.uk



DESCRIPTION:

Winkworth Chiswick is happy to offer a delightful first floor, two double bedroom, split level apartment, presented in excellent condition and located in a quiet, residential area of Chiswick.

Weston Road is within a quarter of a mile of South Acton Overground and Chiswick Park Underground stations and has easy access in and out of London via the M4.

The property comprises a modern open space fully fitted kitchen and living room, two bedrooms (one with fitted wardrobes) and a modern bathroom.

Early viewing is an absolute must to avoid disappointment.

EPC: E

Council Tax Band: D

1 weeks rent holding deposit £484.61

5 week security deposit £2,423.07

ACCOMMODATION

Long Let

2 Bedrooms

1 Reception Room

1 Bathroom

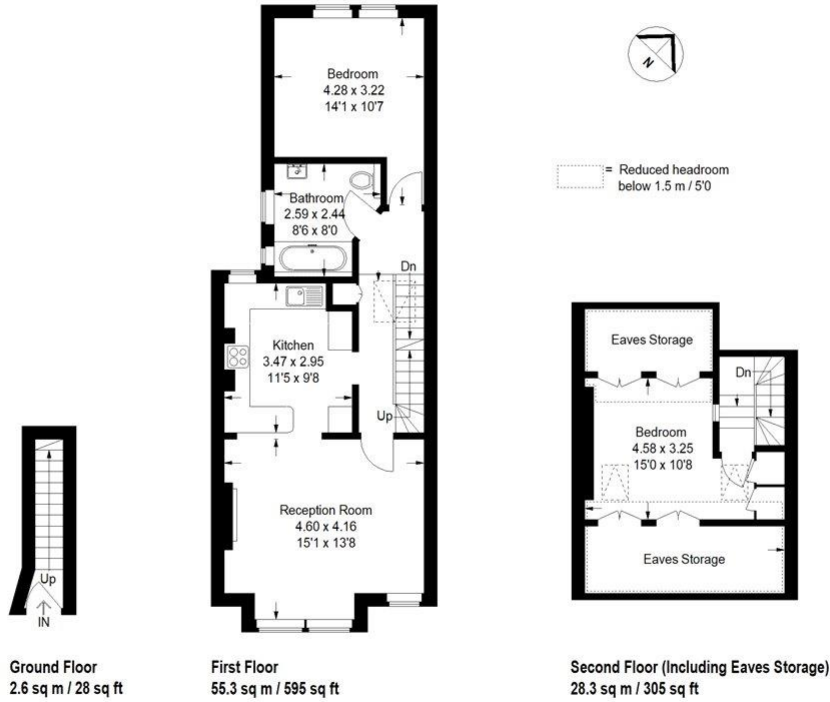
Residents Parking

Part Furnished



Weston Road

Approximate Gross Internal Area (Excluding Eaves Storage)
 74.8 sq m / 805 sq ft
 Eaves Storage = 11.4 sq m / 123 sq ft
 Total = 86.2 sq m / 928 sq ft



Although every attempt has been made to ensure accuracy, all measurements are approximate. This floorplan is for illustrative purposes only and not to scale. Measured in accordance with RICS standards. © www.perspective.co.uk

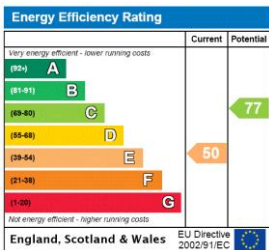
This floorplan is for illustration purposes only and is not to scale. The position and size of doors, windows, appliances and other features are approximate.

Deposit: £2,538.46

Holding Deposit:

Council Tax Band:

Where no figures are shown, we have been unable to ascertain the information. All figures that are shown were correct at the time of printing.



Chiswick | 020 8994 7096 | chiswick@winkworth.co.uk



winkworth.co.uk

Winkworth wishes to inform prospective buyers and tenants that these particulars are a guide and act as information only. All our details are given in good faith and believed to be correct at the time of printing but they don't form part of an offer or contract. No Winkworth employee has authority to make or give any representation or warranty in relation to this property. All fixtures and fittings, whether fitted or not are deemed removable by the vendor unless stated otherwise and room sizes are measured between internal wall surfaces, including furnishings.