



CROYDON ROAD  
**£1,450 PER MONTH UNFURNISHED**

## CONTEMPORARY ONE BEDROOM APARTMENT FOR RENT IN ELMERS END.

Crystal Palace | 02038693222 | [crystalpalace@winkworth.co.uk](mailto:crystalpalace@winkworth.co.uk)

**Winkworth**

for every step...

[winkworth.co.uk](http://winkworth.co.uk)



## DESCRIPTION:

Winkworth is pleased to offer this contemporary one bedroom apartment to rent in Elmers End.

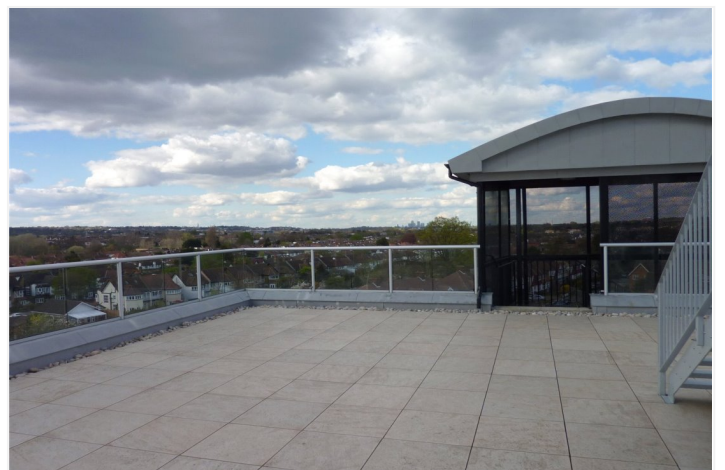
The property is located in a secure development with lift access and comprises entrance hallway spacious open plan reception room with space to dine and high gloss Italian design kitchen which has integrated appliances including dishwasher, good sized bedroom with fitted wardrobes and modern bathroom.

The property benefits from solid oak flooring to the bedroom and kitchen and reception room and also includes a gated, allocated parking space for one car and access to a communal roof terrace with fantastic views over the London skyline.

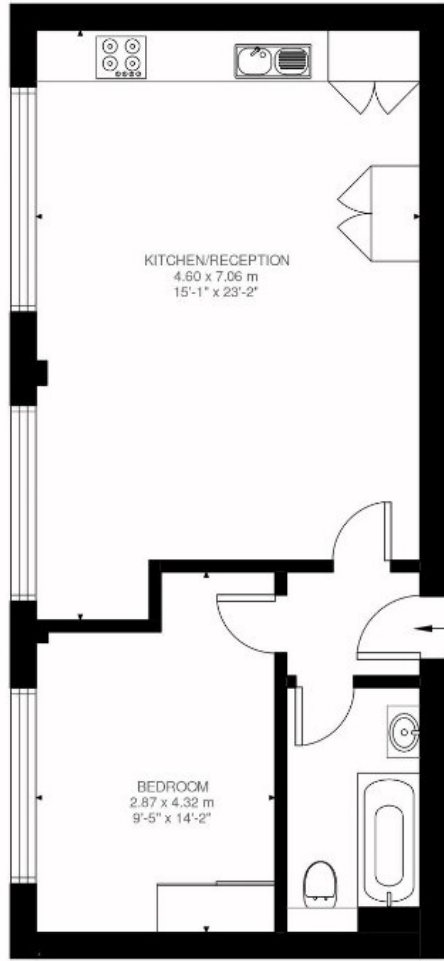
Heating & hot water will be charged at an additional cost on top of the rent of £85 per month.

## AT A GLANCE

- One bedroom
- Third floor flat
- Lift access
- Open plan kitchen & reception
- Fitted wardrobe in bedroom
- Communal roof terrace
- Allocated parking for one car
- Unfurnished
- Available mid-July







Third Floor  
537 IP

Croydon Road, BR3  
Approximate Gross Internal Area  
49.90 SQ.M / 537 SQ.FT

Illustration for identification purposes only. Not to scale.  
Floor Plan Drawn According To RICS Guidelines.

This floorplan is for illustration purposes only and is not to scale. The position and size of doors, windows, appliances and other features are approximate.

Energy Efficiency Rating		
	Current	Potential
Very energy efficient - lower running costs		
(92) <b>A</b>		
(81-91) <b>B</b>		
(69-80) <b>C</b>	78	78
(55-68) <b>D</b>		
(39-54) <b>E</b>		
(21-58) <b>F</b>		
(1-20) <b>G</b>		
Not energy efficient - higher running costs		
England, Scotland & Wales	EU Directive 2002/91/EC	

**Deposit:** £0.00

**Holding Deposit:**

**Council Tax Band:**

Where no figures are shown, we have been unable to ascertain the information. All figures that are shown were correct at the time of printing.



Crystal Palace | 02038693222 | crystalpalace@winkworth.co.uk

for every step...

winkworth.co.uk

Winkworth wishes to inform prospective buyers and tenants that these particulars are a guide and act as information only. All our details are given in good faith and believed to be correct at the time of printing but they don't form part of an offer or contract. No Winkworth employee has authority to make or give any representation or warranty in relation to this property. All fixtures and fittings, whether fitted or not are deemed removable by the vendor unless stated otherwise and room sizes are measured between internal wall surfaces, including furnishings.