



NORTH GATE, ST JOHN'S WOOD, LONDON, NW8 £750,000 LEASEHOLD

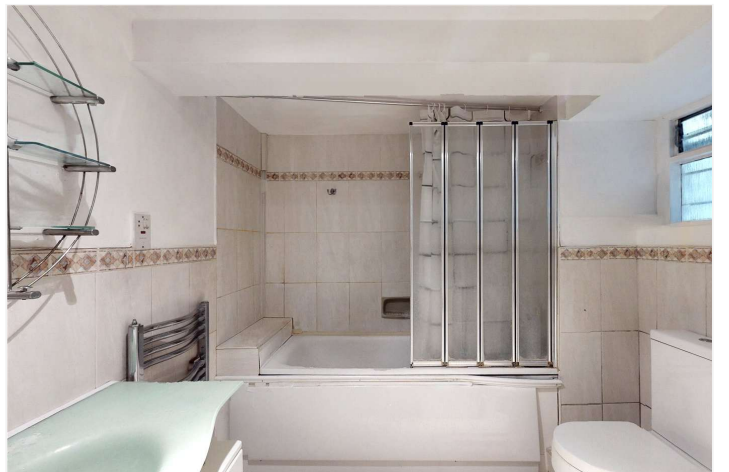
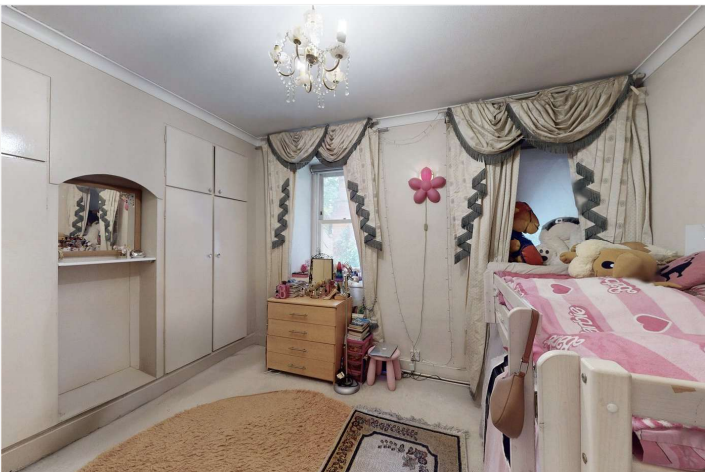
A spacious two double bedroom apartment (984 sq ft GIA), with two bathrooms and residents' parking, located within one of St John's Wood's most iconic period developments, opposite Regent's Park. This property is offered for sale with no onward chain and has scope for modernisation. Positioned at the bottom of St John's Wood High Street, there is a rich selection of boutique shopping facilities and restaurants close-by not to mention numerous transport links such as St John's Wood Underground Station (Jubilee Line) and Baker Street Underground Station (Bakerloo, Circle Hammersmith & City, Jubilee and Metropolitan Lines).

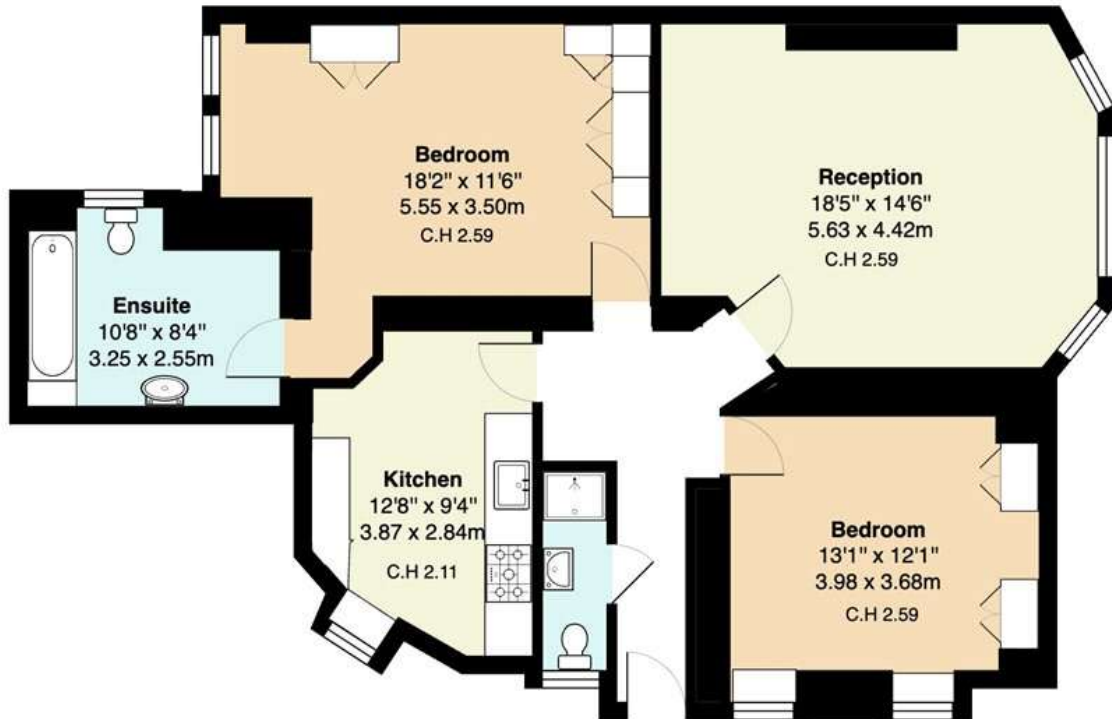
Principle Bedroom with En-Suite Bathroom | Second Bedroom | Shower Room | Reception Room | Separate Kitchen | Residents Parking | Leasehold

Winkworth

for every step...

winkworth.co.uk/st-johns-wood





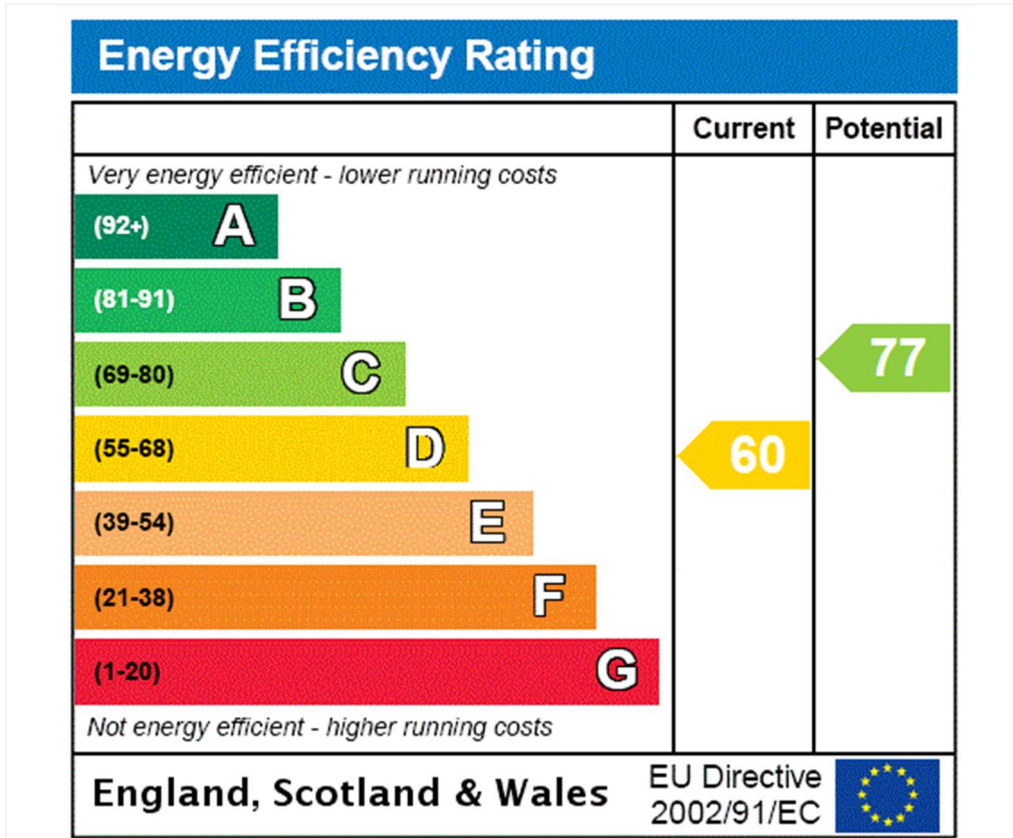
Lower Ground Floor

North Gate, Prince Albert Road, NW8

Total Gross Area: 984 ft² ... 91.4 m²

C.H : Ceiling Height

All measurements are approximate and for identification guideline purposes only, not to scale.
Compliant with the RICS code of measuring practice



Tenure: Leasehold

Term: Expires - 01/04/2127

Service Charge: £8,386.86 per annum

Ground Rent: £1 Annually (subject to increase)

Council Tax Band: F

Where no figures are shown, we have been unable to ascertain the information. All figures that are shown were correct at the time of printing.

Where no figures are shown, we have been unable to ascertain the information. All figures that are shown were correct at the time of printing. These particulars are not an offer or contract, nor part of one. You should not rely on statements by Winkworth in the particulars or by word of mouth or in writing "information" as being factually accurate about the property, its condition or its value. Winkworth does not have any authority to make any representations about the property, and accordingly any information given is entirely without responsibility on the part of the agents, seller(s) or lessor(s). These particulars are prepared on the basis of the information supplied by our client and are a rough guide for information only. The photographs show only certain parts of the property. We are not able to check all of the information and therefore are unable to guarantee accuracy. All interested parties are therefore advised to undertake all necessary inspections and checks that they deem appropriate. Where displayed, the square footage is taken from the floor plans, which are created by an independent supplier. These measurements are approximate and included for illustrative purposes only. The measurements may vary. Winkworth does not make any representation as to the accuracy of these measurements and you should seek to verify them for yourself. Winkworth accept no liability for any loss you may suffer if you rely on these measurements. All fixtures and fittings, whether fitted or not are deemed removable by the vendor unless stated. Any reference to alterations to, or use of, any part of the property does not mean that any necessary planning, building regulations or other consent has been obtained. Amenities and appliances have not been tested



St John's Wood | 103-104 St. Johns Wood Terrace, London, NW8 6PL | 020 7586 7001 | stjohnswood@winkworth.co.uk

for every step...

winkworth.co.uk/st-johns-wood

Winkworth wishes to inform prospective buyers and tenants that these particulars are a guide and act as information only. All our details are given in good faith and believed to be correct at the time of printing but they don't form part of an offer or contract. No Winkworth employee has authority to make or give any representation or warranty in relation to this property. All fixtures and fittings, whether fitted or not are deemed removable by the vendor unless stated otherwise and room sizes are measured between internal wall surfaces, including furnishings.