



**BLAKES QUAY, READING, BERKSHIRE, RG1 3EN**  
**£2,500 PER MONTH FURNISHED**

**EXECUTIVE THREE DOUBLE BEDROOM  
DUPLEX PENTHOUSE APARTMENT WITH  
VIEWS ACROSS THE RIVER KENNET.**

Reading | 0118 4022 300 | [reading@winkworth.co.uk](mailto:reading@winkworth.co.uk)

**Winkworth**

for every step...

[winkworth.co.uk](http://winkworth.co.uk)





## DESCRIPTION:

Executive three double bedroom duplex penthouse apartment with views across the River Kennet. The property benefits from a spacious living/dining room and kitchen breakfast room complete with high spec integrated appliances, three double bedrooms, master with ensuite and dressing area, main family bathroom. There is a secure underground parking space and resident's gym and games room. The property is located within walking distance of the Oracle shopping centre and riverside bars and restaurants. Reading train station is a short walk away and transport links via the A329 and M4 are also close by. Available now. Furnished.

## AT A GLANCE

- Located in Reading town centre
- Penthouse duplex apartment
- Three double bedrooms
- Allocated undercroft parking
- Overlooks the River Kennet
- Communal gym & games room
- Available now
- Furnished

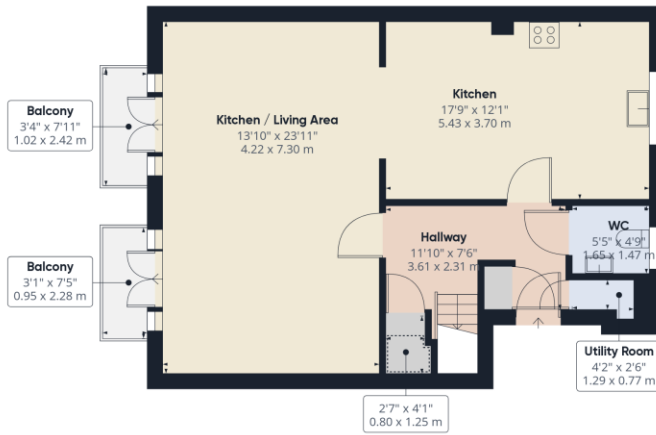




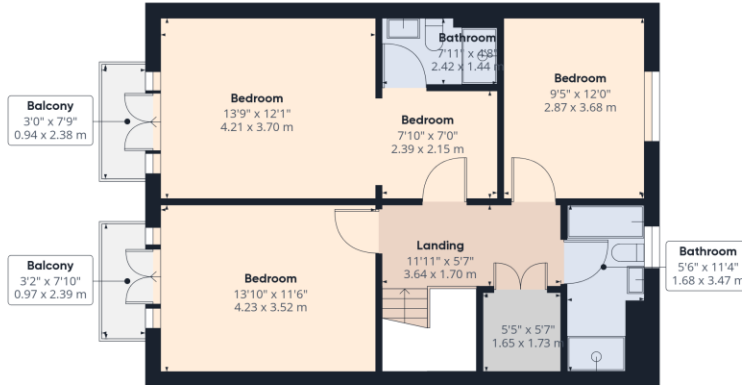








Ground Floor



Floor 1

Approximate total area<sup>(1)</sup>  
1421.37 ft<sup>2</sup>  
132.05 m<sup>2</sup>

Reduced headroom  
7.52 ft<sup>2</sup>  
0.7 m<sup>2</sup>

(1) Excluding balconies and terraces

Reduced headroom (below 1.5m/4.92ft)

While every attempt has been made to ensure accuracy, all measurements are approximate, not to scale. This floor plan is for illustrative purposes only.

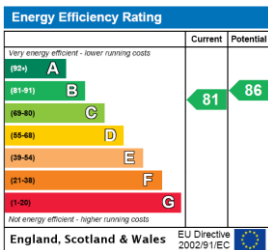
GIRAFFE360

**Deposit - £ £2884.61**

**Holding Deposit - £576.92**

**Council Tax - E**

This floorplan is for illustration purposes only and is not to scale. The position and size of doors, windows, appliances and other features are approximate.



Reading | 0118 4022 300 | reading@winkworth.co.uk

for every step...

winkworth.co.uk

Winkworth wishes to inform prospective buyers and tenants that these particulars are a guide and act as information only. All our details are given in good faith and believed to be correct at the time of printing but they don't form part of an offer or contract. No Winkworth employee has authority to make or give any representation or warranty in relation to this property. All fixtures and fittings, whether fitted or not are deemed removable by the vendor unless stated otherwise and room sizes are measured between internal wall surfaces, including furnishings.