



3 BLAKE ROAD

HERMITAGE, RG18

A spacious four double bedroom detached property featuring a garage, driveway and private garden situated within the popular village of Hermitage.

As you enter this well presented property, you are greeted by an entrance hall featuring understairs storage and a downstairs w/c. Immediately on your left there is a large, bright living room which looks out of the front of the property. Opposite this there is a handy office space, and to the rear there is a generously sized kitchen/dining area featuring French doors leading out to the south-east facing garden. The kitchen features tiled flooring, wooden cupboards and built in appliances.

Upstairs there are four large double bedrooms, with the master benefitting from built in wardrobe storage and an en-suite shower room. The second bedroom also features built in storage, and additionally, the family bathroom is located upstairs too.

To the rear there is a great sized garden which is made up partly of a patioed area, and the rest is laid to lawn. The driveway offers ample parking for two cars, with an additional space available within the garage.



Winkworth

AT A GLANCE

- 1544ft²/143.4m²
- 4 Bedrooms
- Living Room
- Open Plan Kitchen/Diner
- Cloakroom
- Ensuite in Master
- Family Bathroom
- Single Garage
- Driveway

UTILITIES

All mains services are connected. The property operates on gas-fired central heating and benefits from double glazing throughout. There is Ultrafast Broadband available in the area, and no known mobile coverage issues.

EPC - C
West Berkshire Council Tax Band - F

SITUATION

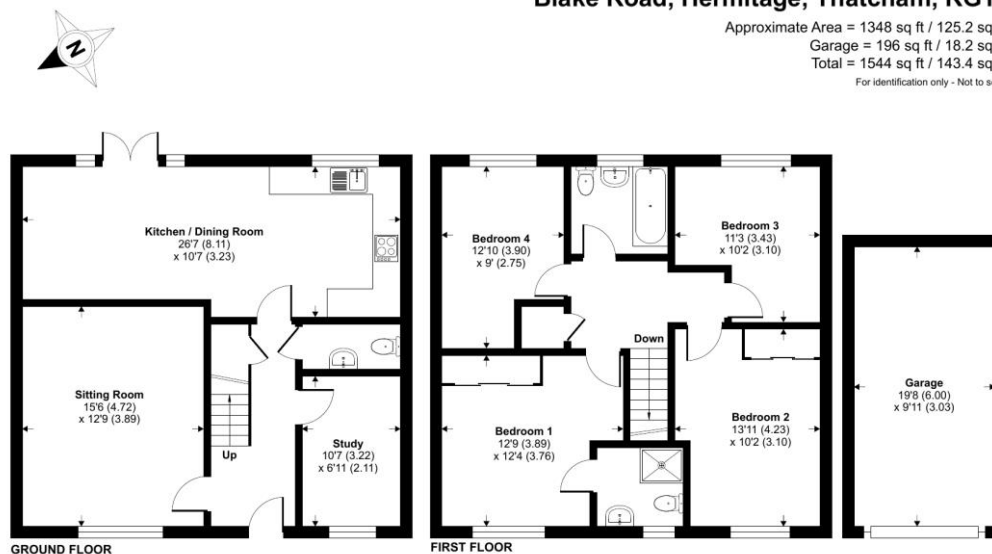
The property is situated on the northern edge of the lovely village of Hermitage, and is in catchment for the Downs School in Compton.

DIRECTIONS

[What3words///softly.prancing.jolt](https://www.what3words.com/softly.prancing.jolt)

Blake Road, Hermitage, Thatcham, RG18

Approximate Area = 1348 sq ft / 125.2 sq m
Garage = 196 sq ft / 18.2 sq m
Total = 1544 sq ft / 143.4 sq m
For identification only - Not to scale



Floor plan produced in accordance with RICS Property Measurement 2nd Edition, Incorporating International Property Measurement Standards (IPMS2 Residential). © richcom 2025. Produced for Winkworth. REF: 1255451

Winkworth



Newbury Office

43 Northbrook Street, Newbury, Berkshire RG14 1DT
01635 552552 | newbury@winkworth.co.uk

[winkworth.co.uk/newbury](https://www.winkworth.co.uk/newbury)

Winkworth

See things differently.