



STANHOPE COURT, FINCHLEY, LONDON, N3  
Offers In The Region Of £600      SHARE OF FREEHOLD

A SPACIOUS, WELL-PRESENTED, THREE  
BEDROOM MAISONETTE, WITH PRIVATE  
SECTION OF GARDEN.

Finchley | 020 8349 3388 | finchley@winkworth.co.uk



for every step...

[winkworth.co.uk](http://winkworth.co.uk)



Winkworth

**DESCRIPTION:**

We are delighted to offer to the market, this well-presented three bedroom ground floor maisonette, ideally located for Regents Park Road, Ballards Lane and Temple Fortune amenities, transport links and recreational parkland, such as Stephens House & Gardens. The property has lovely features throughout, including parquet flooring, and comprises of spacious front reception, kitchen/dining room, three double bedrooms, family bathroom and separate wc. Further benefits include a private terraced area, own section of garden and a share of the freehold.

Offered on a chain free basis, an internal viewing is highly recommended!

**AT A GLANCE**

- Set in a private development
- Ground floor maisonette
- Excellent condition
- In excess of 1100 sq.ft
- Large reception room
- Spacious kitchen/diner
- three bedrooms
- Private section of garden
- Share of freehold



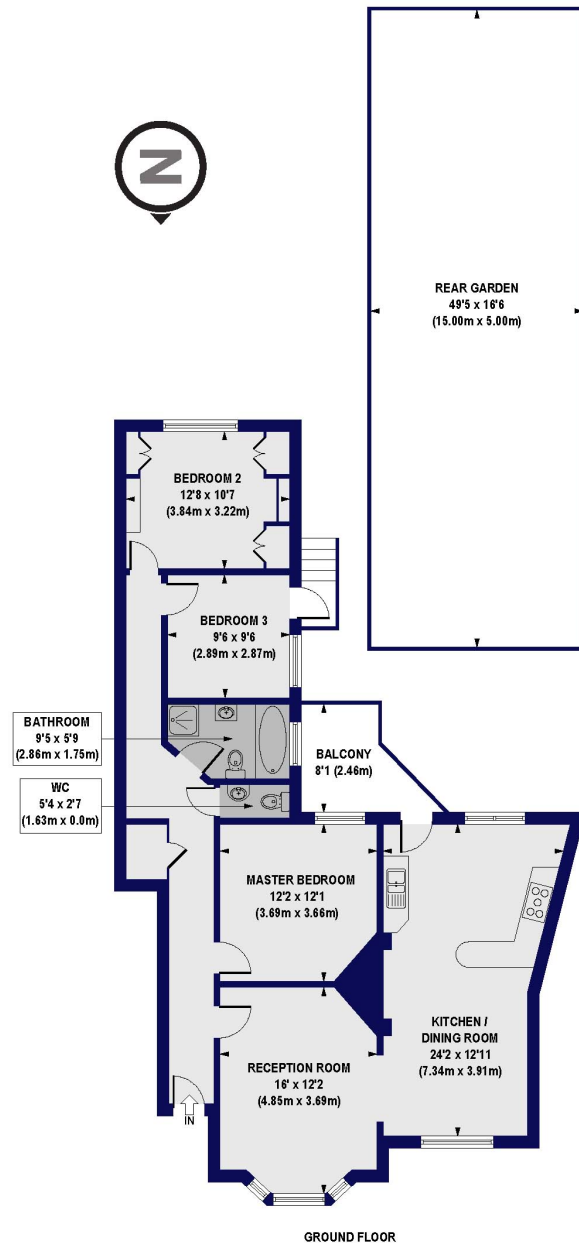
Winkworth



Winkworth



**Stanhope Court, East End Road, N3**  
 Approx. Gross Internal Floor Area 1117 sq. ft / 103.75 sq. m



GROUND FLOOR

All measurements of walls, doors, windows, fittings and appliances, including their size and location, are shown as standard sizes and do not constitute any warranty or representation by the seller, their agent or CP Creative. Any intending purchaser must satisfy himself by inspection or otherwise as to the correctness of the information contained in these plans. This plan is for illustrative purposes only and should be used as such by any prospective purchasers.

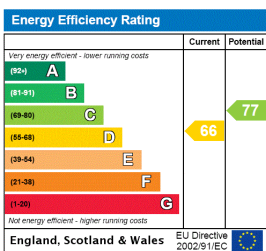


This floorplan is for illustration purposes only and is not to scale. The position and size of doors, windows, appliances and other features are approximate.

**Tenure:** Share of Freehold

**Council Tax Band:** D

Where no figures are shown, we have been unable to ascertain the information. All figures that are shown were correct at the time of printing.



Finchley | 020 8349 3388 | finchley@winkworth.co.uk

for every step...

winkworth.co.uk

Winkworth wishes to inform prospective buyers and tenants that these particulars are a guide and act as information only. All our details are given in good faith and believed to be correct at the time of printing but they don't form part of an offer or contract. No Winkworth employee has authority to make or give any representation or warranty in relation to this property. All fixtures and fittings, whether fitted or not are deemed removable by the vendor unless stated otherwise and room sizes are measured between internal wall surfaces, including furnishings.