



Ufford Street, London, SE1

£925,000 Freehold

An opportunity to acquire a two bedroom semi-detached house in need of renovation and ideally located between Southwark and Waterloo. EPC Rating D.

LOCATION

Ufford Street is just south of The Cut, between Blackfriars and Waterloo Road, (situated within the Congestion Zone).

DESCRIPTION

The property requires refurbishment throughout and is ideal for anyone looking to put their own stamp on a house in the area.

Enter the reception room, where there are two double glazed wooden sash windows to the front. There is a dining room at the back of the house with a kitchen in the rear addition. You can access the garden via the dining room or kitchen.

The main difference between this house and many others on the road is that it is semi-detached and has side access to the garden at the rear. This means that the garden is wider than most others on the road.

The first floor is arranged as two double bedrooms divided by the staircase and ample loft storage above. There is also a bathroom on this floor.

LOCAL AUTHORITY

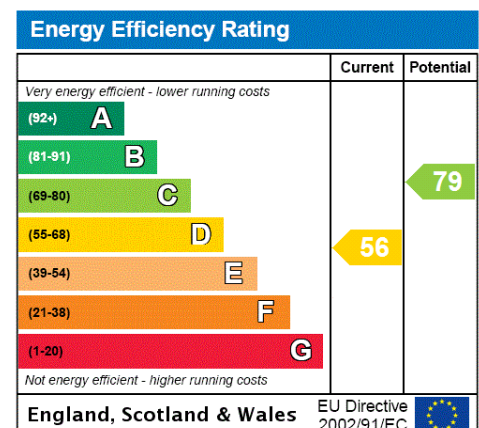
Lambeth, London
Council Tax Band E

TENURE

Freehold

DIRECTIONS

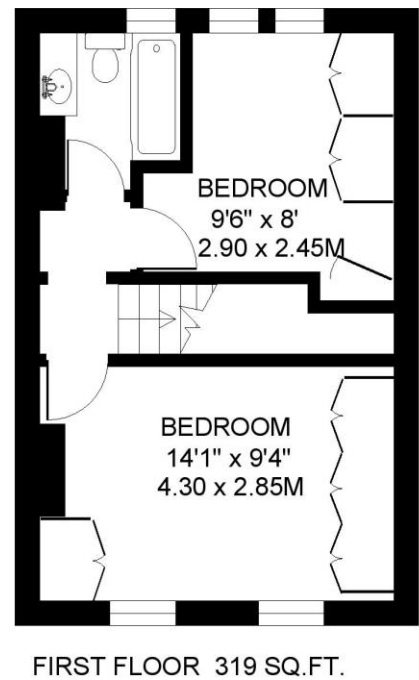
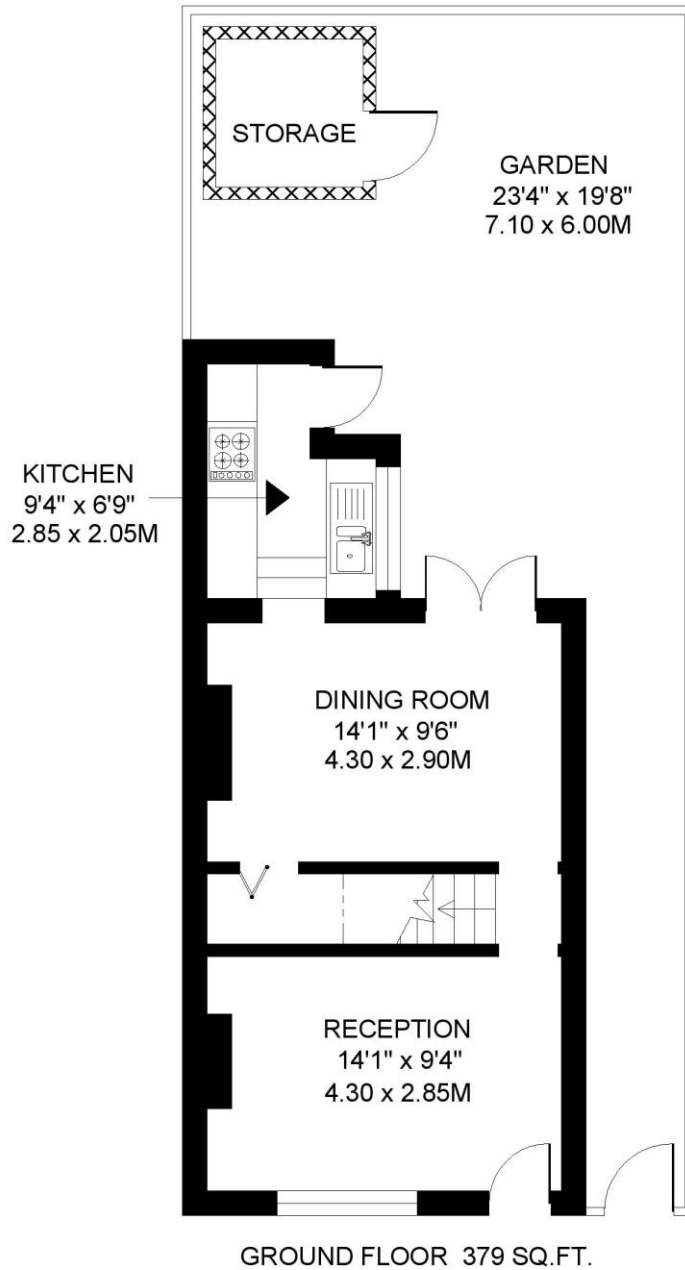
Waterloo Mainline Station (National Rail, Northern, Bakerloo, Jubilee and Waterloo & City Line) is mere 390 metres (0.24 miles) away. Southwark Underground Station (Jubilee Line) is approximately 340 metres (0.21 miles) away.





UFFORD STREET. SE1
2 BEDROOM HOUSE

Approximate gross floor area
698 SQ.FT. / 64.8 SQ.M.
PLUS GARDEN STORAGE 35 SQ.FT. / 3.2 SQ.M.



This floorplan is for illustration purposes only and is not to scale. The position and size of doors, windows, appliances and other features are approximate.

Kennington | 020 7587 0600 | kennington@winkworth.co.uk