

Queens Mead Gardens

Odiham Hampshire RG29 1LJ



Description

Fantastic location just off the High Street of Odiham village, within walking distance to local amenities plus Basingstoke Canal and Odiham Castle. Great access to junction 5 of the M3 and the closest train station would be Hook.

A mid terraced house over three floors house has just had new carpets throughout and a freshen up of paint work, ready for someone to make it their home.

Walking in through the entrance hall you have the modern kitchen/breakfast room to the front and the bright airy living/dining room to the rear overlooking the garden. There is also a downstairs cloakroom.

On the first floor you have a large landing which could be used as a study area quite comfortably. The property has three bedrooms of which all are doubles. The master bedroom spans across the rear of the property and the third bedroom also with an ensuite finishes off accommodation on the first floor. Bedroom two covers the top floor with built in wardrobes and a bathroom.

Externally there is paved courtyard garden and a car port with two parking spaces and additional storage.



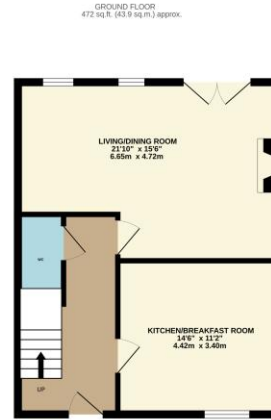
Winkworth

Accommodation

- Modern Townhouse
- Unfurnished
- Three Bedrooms
- Living/dining room
- Kitchen/breakfast room
- Garden
- Car port
- Parking

All details are given in good faith and are believed to be correct at time of printing. Winkworth give no representation as to their accuracy and potential purchasers or tenants must satisfy themselves by inspection or otherwise as to their correctness. No employee of Winkworth has authority to make or give any representation or warranty in relation to this property.

Energy Efficiency Rating		Current	Potential
Very energy efficient - lower running costs			
(92-)	A		
(81-91)	B		
(69-80)	C		
(55-68)	D	68	80
(39-54)	E		
(21-38)	F		
(1-20)	G		
Not energy efficient - higher running costs			
England, Scotland & Wales		EU Directive 2002/91/EC	



TOTAL FLOOR AREA: 1080 sq.ft. (100.4 sq.m.) approx.

Whilst every attempt has been made to ensure the accuracy of the floorplan contained here, measurements of doors, windows, rooms and any other items are approximate and no responsibility is taken for any error, omission or mis-statement. This plan is for illustrative purposes only and should be used as such by any prospective purchaser. The services, systems and appliances shown have not been tested and no guarantee as to their operability or efficiency can be given.
Made with Metropix ©2025



Basingstoke Office

10B Church Street, Basingstoke, Hampshire, RG21 7QE
 01256 811730 | basingstoke@winkworth.co.uk
winkworth.co.uk/Basingstoke



See things differently.