



LOWER MERTON RISE, NW3 £2,350,000 FREEHOLD

We are pleased to offer this superb four bedroom townhouse (2282 sq ft/ 212 sq m) with off street parking and a west facing garden. Situated on this popular road, the house offers flexible and well planned accommodation throughout and includes a 32' reception room on the first floor, a kitchen/breakfast room with direct access to the garden and a stunning top floor principle bedroom suite with dressing room and bathroom.

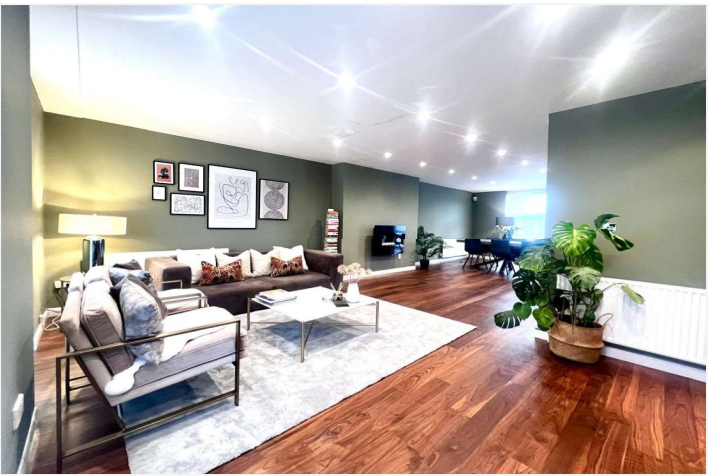
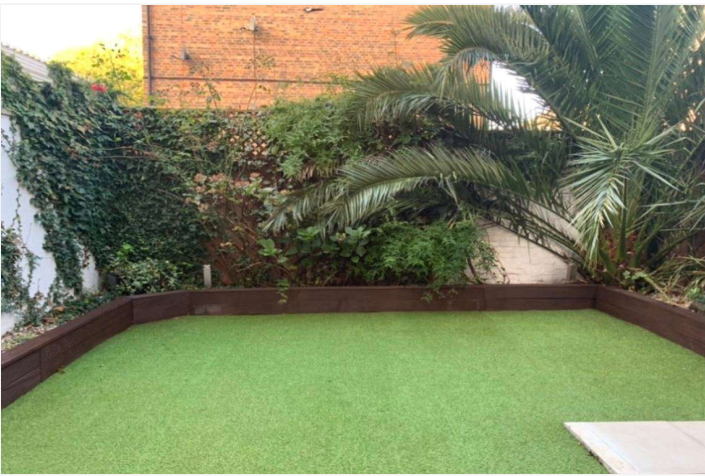
Lower Merton Rise is located close to leafy Primrose Hill and approximately 0.3 miles away from the green open spaces of Primrose Hill Park. This charming neighbourhood offers an abundance of independent cafes, shops, gastro pubs and restaurants which are located approximately 0.5 miles away. The property is only a short distance from Swiss Cottage and Chalk Farm Underground Stations (both approximately 0.5 miles away).

Principle Bedroom with En-Suite Bathroom | Second Bedroom with En-Suite Shower Room | Two Further Bedrooms | Family Bathroom | Reception Room | Dining Room | Separate Kitchen | Utility Room | WC | Storage Room | Private Garden | Off Street Parking | Freehold

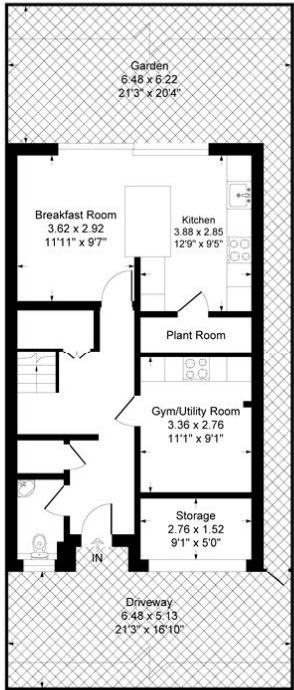
Winkworth

for every step...

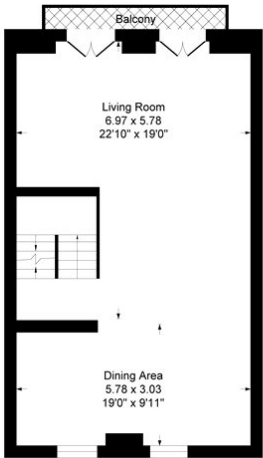
winkworth.co.uk/st-johns-wood



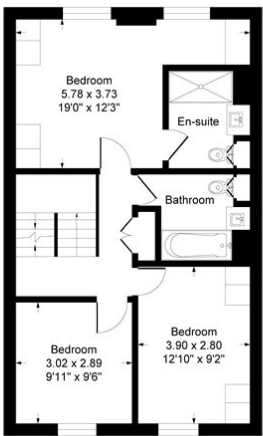
Lower Merton Rise Primrose Hill NW3
Approximate Gross Internal Floor Area = 212.0 sq m / 2282 sq ft



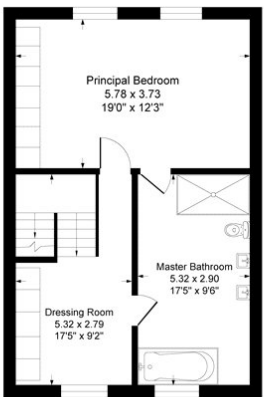
Ground Floor



First Floor

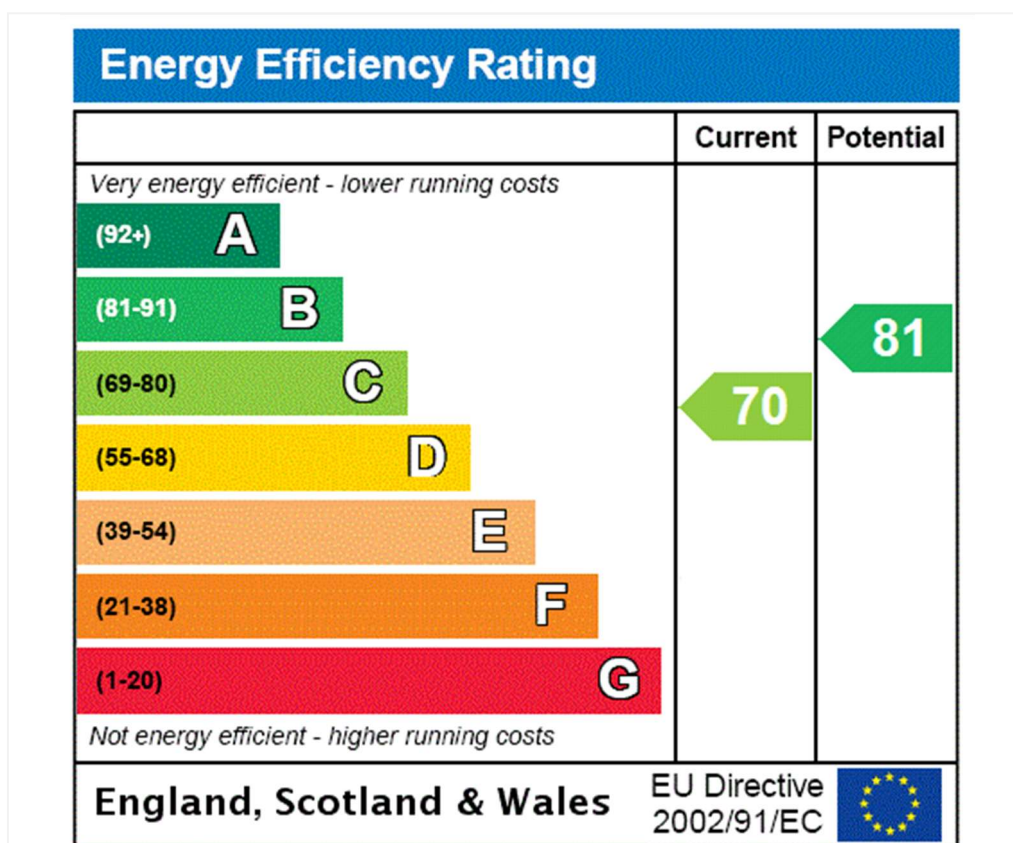


Second Floor



Third Floor

Illustration for identification purposes only, measurements are approximate, not to scale.



Tenure: Freehold

Service Charge: £1000 per annum

Council Tax Band: G

Where no figures are shown, we have been unable to ascertain the information. All figures that are shown were correct at the time of printing.

Where no figures are shown, we have been unable to ascertain the information. All figures that are shown were correct at the time of printing. These particulars are not an offer or contract, nor part of one. You should not rely on statements by Winkworth in the particulars or by word of mouth or in writing "information" as being factually accurate about the property, its condition or its value. Winkworth does not have any authority to make any representations about the property, and accordingly any information given is entirely without responsibility on the part of the agents, seller(s) or lessor(s). These particulars are prepared on the basis of the information supplied by our client and are a rough guide for information only. The photographs show only certain parts of the property. We are not able to check all of the information and therefore are unable to guarantee accuracy. All interested parties are therefore advised to undertake all necessary inspections and checks that they deem appropriate. Where displayed, the square footage is taken from the floor plans, which are created by an independent supplier. These measurements are approximate and included for illustrative purposes only. The measurements may vary. Winkworth does not make any representation as to the accuracy of these measurements and you should seek to verify them for yourself. Winkworth accept no liability for any loss you may suffer if you rely on these measurements. All fixtures and fittings, whether fitted or not are deemed removable by the vendor unless stated. Any reference to alterations to, or use of, any part of the property does not mean that any necessary planning, building regulations or other consent has been obtained. Amenities and appliances have not been tested

Winkworth

St John's Wood | 103-104 St. Johns Wood Terrace, London, NW8 6PL | 020 7586 7001 | stjohnswood@winkworth.co.uk

for every step...

winkworth.co.uk/st-johns-wood

Winkworth wishes to inform prospective buyers and tenants that these particulars are a guide and act as information only. All our details are given in good faith and believed to be correct at the time of printing but they don't form part of an offer or contract. No Winkworth employee has authority to make or give any representation or warranty in relation to this property. All fixtures and fittings, whether fitted or not are deemed removable by the vendor unless stated otherwise and room sizes are measured between internal wall surfaces, including furnishings.