



TEWKESBURY AVENUE, SE23  
**£1,400,000 FREEHOLD**

## FIVE BEDROOM MODERN FAMILY HOME.

Forest Hill | | [foresthill@winkworth.co.uk](mailto:foresthill@winkworth.co.uk)

**Winkworth**

for every step...

[winkworth.co.uk](http://winkworth.co.uk)



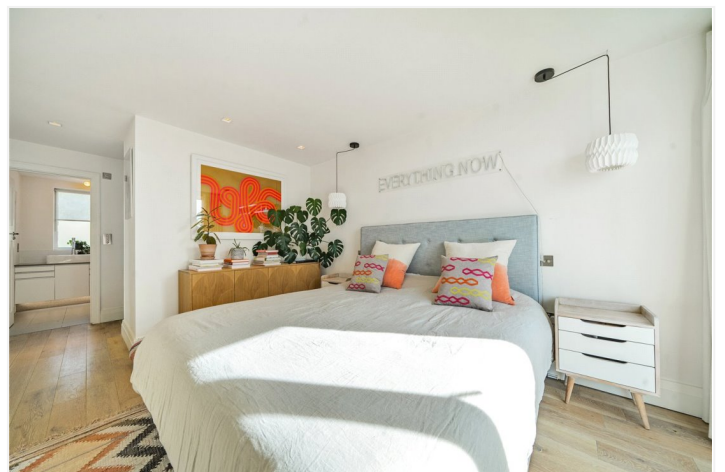


## DESCRIPTION:

Tewkesbury Lodge Estate | Large five-bedroom house | 29'4ft Open plan kitchen/ living | WC | Three bathrooms | 47ft landscaped garden | Utility room | 1,922 Sq. ft | Panoramic views of London skyline | SE22 border | Chain Free

## AT A GLANCE

- Tewkesbury Lodge Estate
- Large five-bedroom house
- 29'4ft Open plan kitchen/ living
- WC
- Three bathrooms
- 47ft landscaped garden
- Utility room
- 1,922 Sq. ft



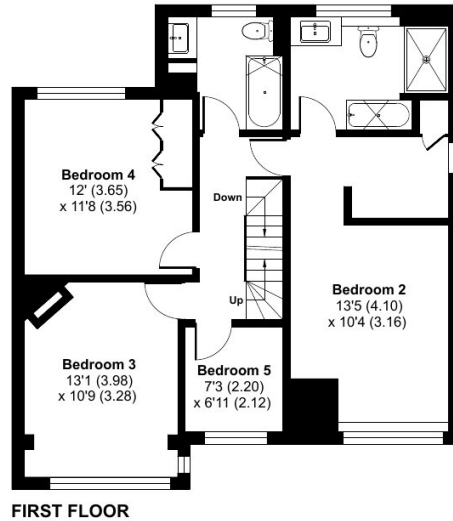
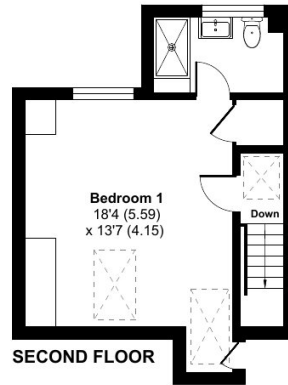
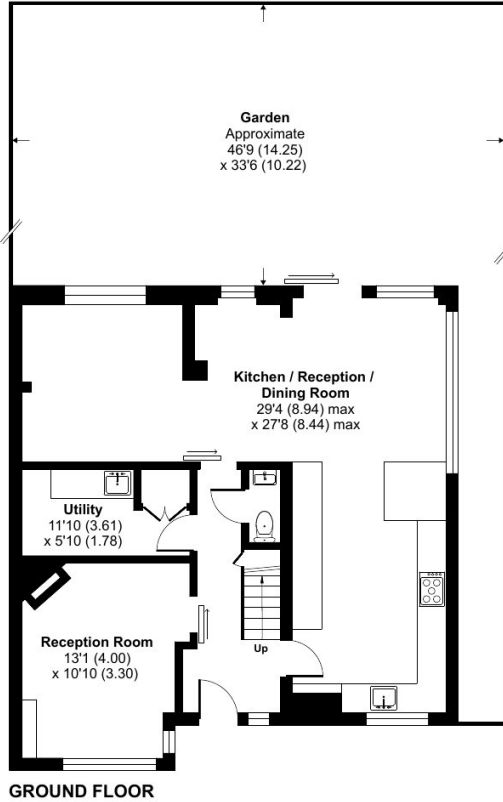




# Tewkesbury Avenue, London, SE23

Approximate Area = 1922 sq ft / 178.5 sq m

For identification only - Not to scale



Floor plan produced in accordance with RICS Property Measurement Standards incorporating International Property Measurement Standards (IPMS2 Residential). © nrichcom 2024. Produced for Winkworth Forest Hill and New Cross. REF: 1130262

This floorplan is for illustration purposes only and is not to scale. The position and size of doors, windows, appliances and other features are approximate.

Energy Efficiency Rating		Current	Potential
Very energy efficient - lower running costs			
(92-100)	A		82
(81-91)	B		
(69-80)	C	70	
(55-68)	D		
(39-54)	E		
(21-58)	F		
(1-20)	G		
Not energy efficient - higher running costs			
England, Scotland & Wales		EU Directive 2002/91/EC	

**Tenure:** Freehold

**Term:** 0 year and 0 months

**Service Charge:** £0 per annum

**Ground Rent:** £ 0 Annually (subject to increase)

**Council Tax Band:** E

Where no figures are shown, we have been unable to ascertain the information. All figures that are shown were correct at the time of printing.

**Winkworth**

Forest Hill | | foresthill@winkworth.co.uk

for every step...

winkworth.co.uk

Winkworth wishes to inform prospective buyers and tenants that these particulars are a guide and act as information only. All our details are given in good faith and believed to be correct at the time of printing but they don't form part of an offer or contract. No Winkworth employee has authority to make or give any representation or warranty in relation to this property. All fixtures and fittings, whether fitted or not are deemed removable by the vendor unless stated otherwise and room sizes are measured between internal wall surfaces, including furnishings.