



GATESHEAD ROAD, HERTFORDSHIRE, WD6  
**£540,000 FREEHOLD**

## A THREE BEDROOM END OF TERRACE FAMILY HOUSE WITH SOUTHERLY GARDEN

Borehamwood | 020 8953 8899 | borehamwood@winkworth.co.uk



**DESCRIPTION:**

This three bedroom end of terrace family house provides well-proportioned family accommodation totalling in excess of 900 square feet which is complimented by a Southerly facing rear garden and off street parking fir several cars to the front.

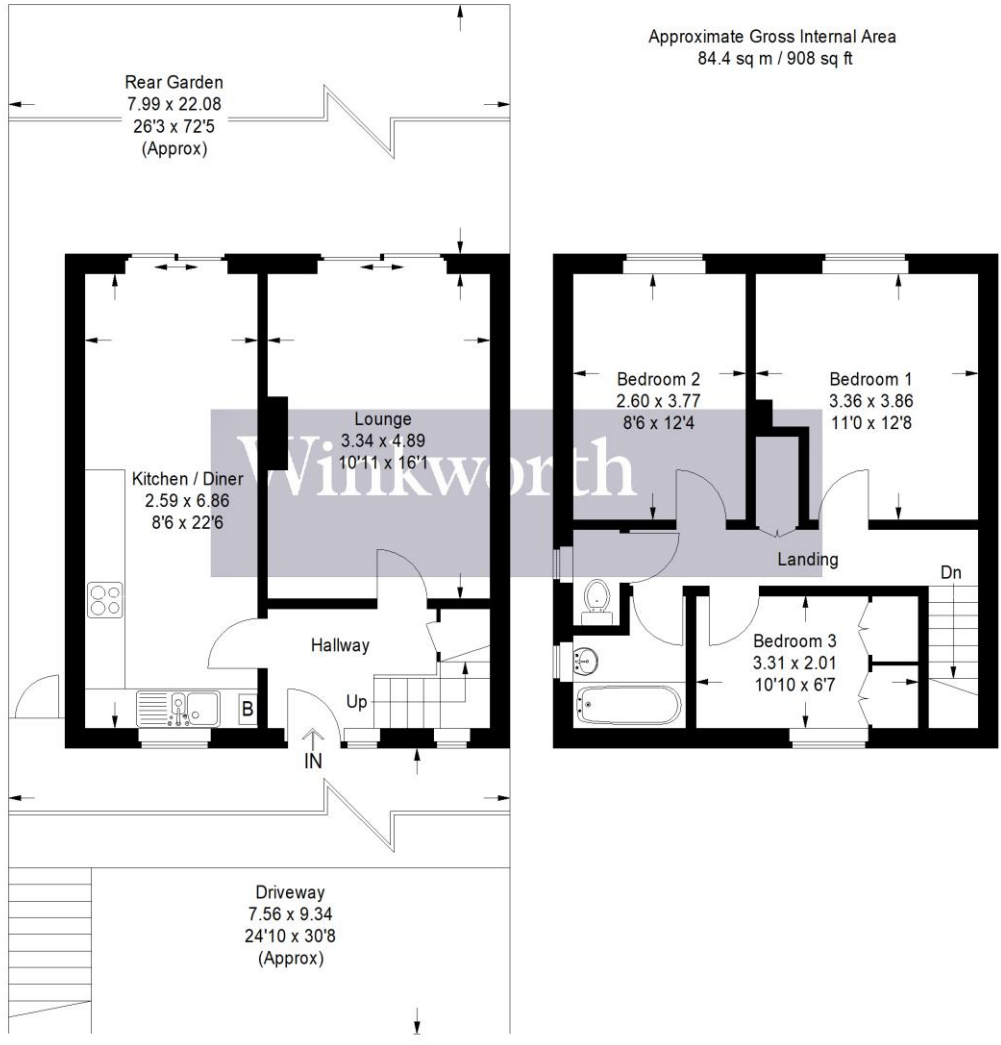
Several "Good" Ofsted rated schools including Woodlands and Cowley Hill are located nearby as well as the recently reconstructed Hertswood Academy, Aycliffe Park and Thirsk Cliffe Nature Park

**AT A GLANCE**

- 3 Bedrooms
- Off Street Parking
- 908 Square Feet
- Double Glazed
- Gas Central Heating
- Southerly Rear Garden
- Scope To Extend(Stpp)







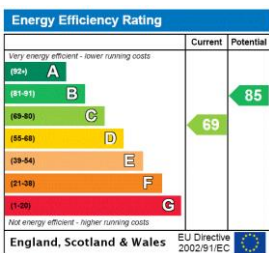
Approximate Gross Internal Area  
84.4 sq m / 908 sq ft

Ground Floor

First Floor

Illustration for identification purposes only, measurements are approximate, not to scale. Winkworth © 2024 (ID1155273)

This floorplan is for illustration purposes only and is not to scale. The position and size of doors, windows, appliances and other features are approximate.



**Tenure:** Freehold

**Term:** 0 year and 0 months

**Service Charge:** £0 per annum

**Ground Rent:** £ 0 Annually (subject to increase)

**Council Tax Band:**

Where no figures are shown, we have been unable to ascertain the information. All figures that are shown were correct at the time of printing.