



Devonport Mews, W12

£950,000 Freehold

A fantastic four bedroom house, set within a private gated mews, in the heart of vibrant Shepherds Bush.

Reception Room | Kitchen | 4 Bedrooms | En Suite Shower Room | Bathroom | Cloakroom | Utility Room | 2 Balconies | 1270 Sq Ft / 118 Sq M | Council Tax Band E | EPC Rating Band C

Winkworth



LOCATION

Tucked away just off of Devonport Road, this elegant & secure collection of mews houses are moments from the amenities of Shepherd's Bush, with its wonderful array of independent restaurants, bars and Westfield London. The transport connections of Shepherd's Bush Market Underground station (Hammersmith & City and Circle Lines) and Shepherd's Bush (Central line and London Overground) are both within easy reach.

DESCRIPTION

Well presented throughout, the house offers accommodation which comprises open plan reception room/kitchen, utility room and cloakroom on the ground floor; two double bedrooms (one with en suite shower room) and balcony on the first floor and two further bedrooms and bathroom on the second floor.

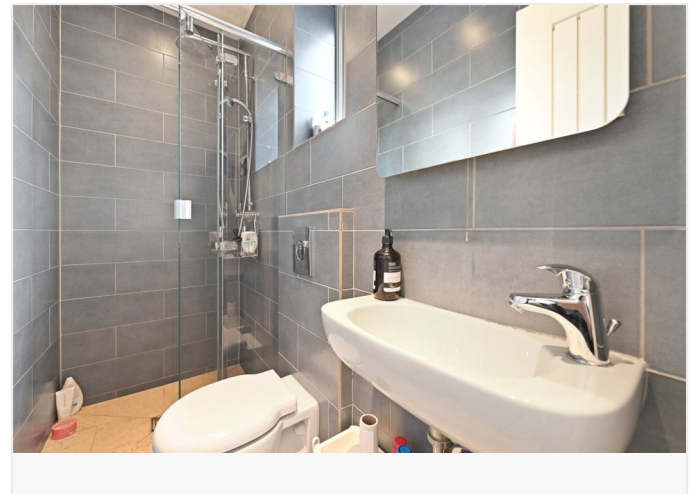





LOCAL AUTHORITY
Hammersmith & Fulham

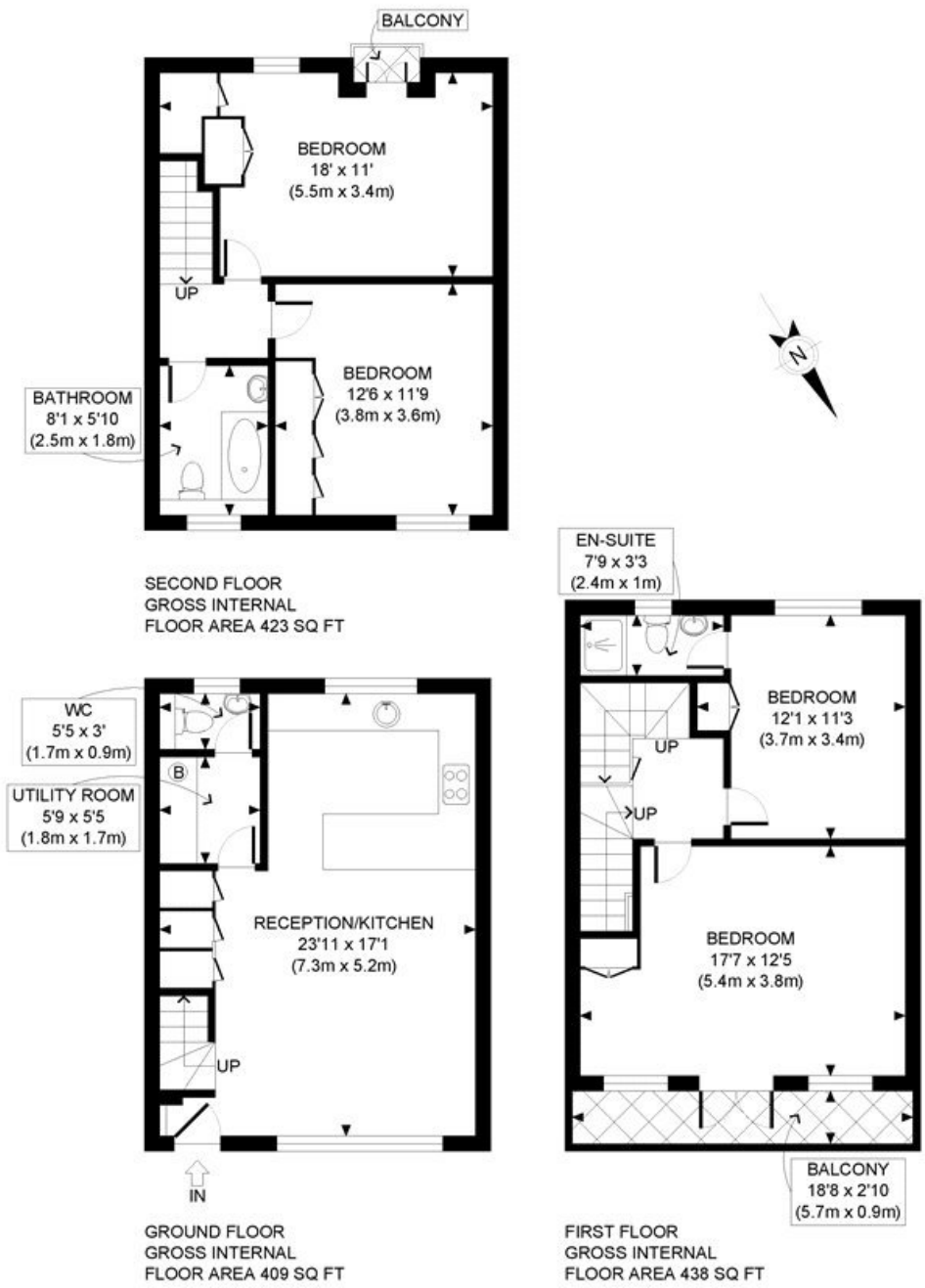
TENURE
Freehold.

PRICE: £950,000 Freehold



Energy Efficiency Rating

	Current	Potential
Very energy efficient - lower running costs		
(92+) A		
(81-91) B		87
(69-80) C	76	
(55-68) D		
(39-54) E		
(21-38) F		
(1-20) G		
Not energy efficient - higher running costs		
England, Scotland & Wales	EU Directive 2002/91/EC 	



APPROX. GROSS INTERNAL FLOOR AREA: 1270 SQ FT/ 118 SQM



This plan is for illustrative purposes only and should be used as such by any prospective client. Whilst every attempt has been made to ensure the accuracy of the Floor Plan contained here, measurements of the doors, windows, rooms and any other items are approximate and no responsibility is taken for any errors, omissions, or misstatement. The services, systems and appliances shown have not been tested and no guarantee as to the operability or efficiency can be given.



The displayed square footage is taken from the floor plans with measurements created using the Royal Institute of Chartered Surveyors' Code of Practice for Measuring. These measurements are approximate and included for illustrative purposes only. Winkworth does not make any representation as to the accuracy of these measurements and you should seek to verify them for yourself. Winkworth accept no liability for any loss you may suffer if you rely on these measurements.

Shepherds Bush | 020 8735 3266 | shepherdsbush@winkworth.co.uk



for every step...

Under the Property Misdescriptions Act 1991, these Particulars are a guide and act as information only. All details are given in good faith and are believed to be correct at time of printing. Winkworth give no representation as to their accuracy and potential purchasers or tenants must satisfy themselves by inspection or otherwise as to their correctness. No employee of Winkworth has authority to make or give any representation or warranty in relation to this property.