



CREMER STREET, LONDON, E2
£1,750,000 LEASEHOLD

EXQUISITE THREE-DOUBLE BEDROOM, THREE-BATHROOM PENTHOUSE APARTMENT WITH ROOF TERRACE IN HOXTON

Hackney | 020 8986 4216 | hackney@winkworth.co.uk

Winkworth

winkworth.co.uk

See things differently



DESCRIPTION:

This extraordinary and inspiring penthouse duplex apartment spans 1,847sqft and occupies the entire 4th and 5th floors of this striking industrial-style newly created development.

From the moment you enter the building you will be captivated by the attention to detail and commitment to the very best in high-quality design with this single penthouse flat being directly accessible from the lift into a series of capacious and striking living areas that provide tranquil and luxurious living in the heart of this thriving district.

The property has cleverly incorporated the staircase to maintain its exclusive sense of seclusion, and opens out at the top floor level into a vast living area with a stunning designer kitchen installation across one single wall, large island unit and a set of awesome sliding doors that open out onto a fabulous decked private terrace with views across North London.

To the floor below (4th) you are treated to craftsmanship and designer installations of an exceptional standard as you absorb the 3 large double bedrooms, all of which enjoy en-suite shower rooms, exceptional built in storage and the additional of a separate W.C.

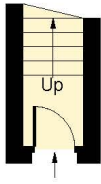
Winkworth



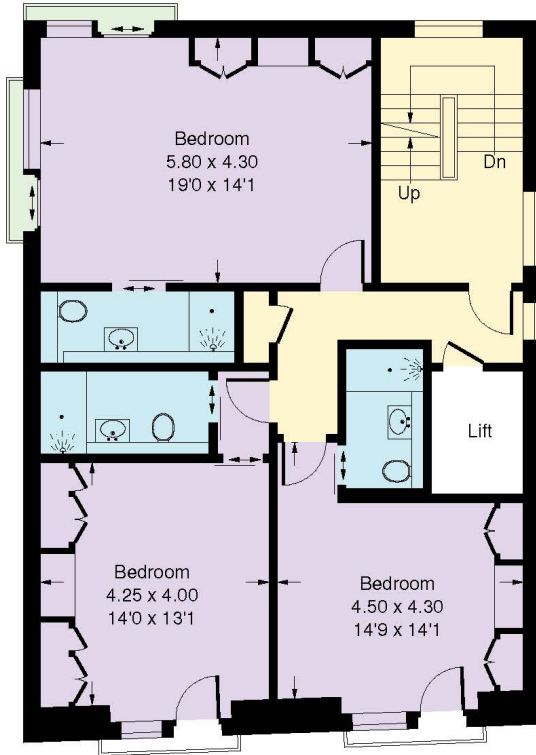
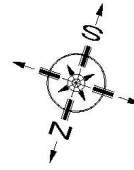
Winkworth

Cremer Street, E2

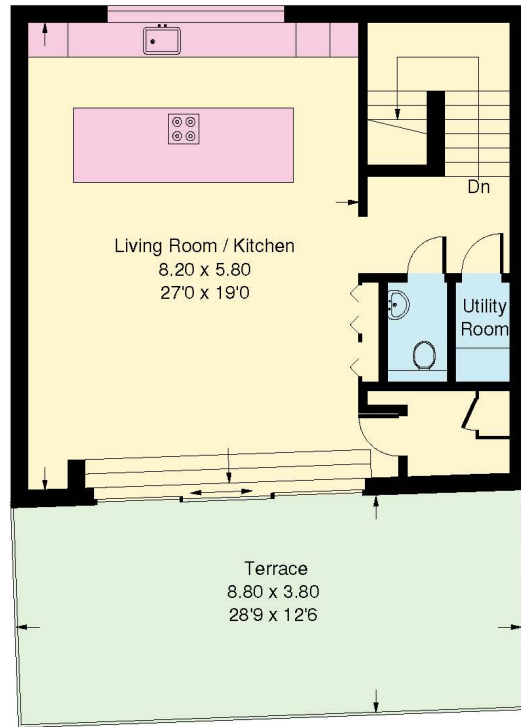
Approx. Gross Internal Area
171.62 sq m / 1847 sq ft



Third Floor Entrance



Fourth Floor



Fifth Floor

Whilst every attempt has been made to ensure the accuracy of the floor plan, measurements are approximate and not to scale. No guarantee is given on the total square footage of the property quoted on the plan. Figures given are for guidance. Plan is for illustration purposes only, not to be used for valuations.

This floorplan is for illustration purposes only and is not to scale. The position and size of doors, windows, appliances and other features are approximate.

Energy Efficiency Rating		Current	Potential
Very energy efficient - lower running costs			
(92)	A		
(81-91)	B		
(69-80)	C	80	80
(55-68)	D		
(39-54)	E		
(21-38)	F		
(1-20)	G		
Not energy efficient - higher running costs			
England, Scotland & Wales		EU Directive 2002/91/EC	

Hackney | 020 8986 4216 | hackney@winkworth.co.uk



winkworth.co.uk

See things differently

Winkworth wishes to inform prospective buyers and tenants that these particulars are a guide and act as information only. All our details are given in good faith and believed to be correct at the time of printing but they don't form part of an offer or contract. No Winkworth employee has authority to make or give any representation or warranty in relation to this property. All fixtures and fittings, whether fitted or not are deemed removable by the vendor unless stated otherwise and room sizes are measured between internal wall surfaces, including furnishings.