



LUSCINIA VIEW, READING, BERKSHIRE, RG1 8AB
£2,400 PER MONTH FURNISHED

MODERN FIFTH FLOOR THREE BEDROOM DUPLEX APARTMENT LOCATED IN READING TOWN CENTRE

Reading | 0118 4022 300 | reading@winkworth.co.uk

Winkworth

for every step...

winkworth.co.uk



DESCRIPTION:

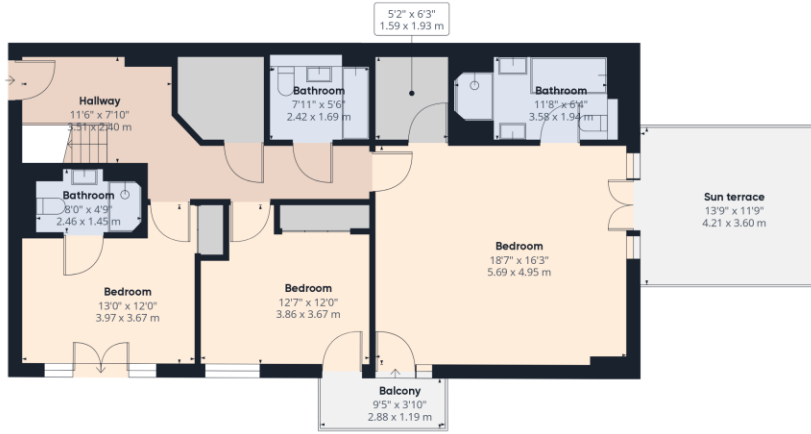
Modern fifth floor three bedroom duplex apartment located in Reading town centre, overlooking Kings Meadow and the River Thames. The property comprises an open plan living dining room and kitchen with a private terrace and Juliette balcony, master bedroom with four piece en suite bathroom, walk in wardrobe and a second private terrace, two further double bedrooms and two bathrooms. Further benefits include new carpets throughout, video entry system, lift access, allocated parking and well maintained communal gardens. Available 10th December 2024. Furnished.

AT A GLANCE

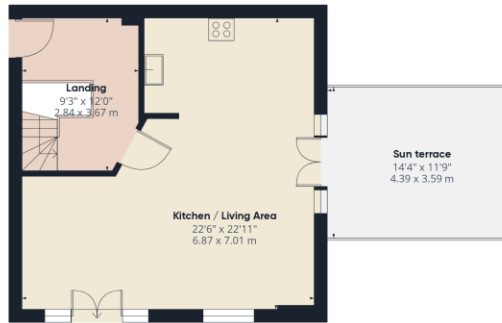
- Duplex apartment
- Three double bedrooms
- Two private terraces
- Council tax band E
- Meadow facing with river views
- Allocated parking space
- Available 10th December
- Furnished







Ground Floor



Floor 1

Approximate total area¹⁾

1474.06 ft²
136.94 m²

Excluding balconies and terraces

While every attempt has been made to ensure accuracy, all measurements are approximate, not to scale. This floor plan is for illustrative purposes only.

GIRAFFE360

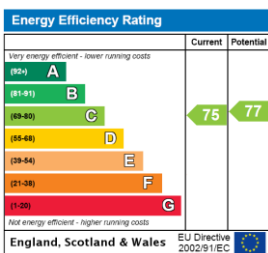
This floorplan is for illustration purposes only and is not to scale. The position and size of doors, windows, appliances and other features are approximate.

Deposit: £2,769.23

Holding Deposit: £553.84

Council Tax Band: E

Where no figures are shown, we have been unable to ascertain the information. All figures that are shown were correct at the time of printing.



Reading | 0118 4022 300 | reading@winkworth.co.uk



for every step...

winkworth.co.uk

Winkworth wishes to inform prospective buyers and tenants that these particulars are a guide and act as information only. All our details are given in good faith and believed to be correct at the time of printing but they don't form part of an offer or contract. No Winkworth employee has authority to make or give any representation or warranty in relation to this property. All fixtures and fittings, whether fitted or not are deemed removable by the vendor unless stated otherwise and room sizes are measured between internal wall surfaces, including furnishings.