



GLOUCESTER TERRACE, BAYSWATER, W2
£500,000 LEASEHOLD ABOUT. 176 YEARS REMAINING

A CHARMING AND LIGHT FIRST FLOOR ONE BEDROOM APARTMENT, WITH A AN ORNATE WROUGHT IRON BALCONY, FABULOUSLY HIGH CEILINGS AND ONLY A SHORT STROLL FROM THE NEIGHBOURING WESTBOURNE GROVE AND QUEENSWAY.

West End | 020 7240 3322 | westend@winkworth.co.uk



for every step...

winkworth.co.uk



DESCRIPTION:

Gloucester Terrace, with its white stucco period terraces, is a sought after central London location in the vicinity of Paddington and Bayswater. Located in the City of Westminster - W2, it runs northwards from Lancaster Terrace and Hyde Park before curving round to meet Porchester Square.

The property is well placed for transport links and amenities - Royal Oak (Hammersmith & City / Circle lines), Queensway (Central line - zone 1) and Paddington mainline station (Heathrow Express / Elizabeth line).



Winkworth

for every step...



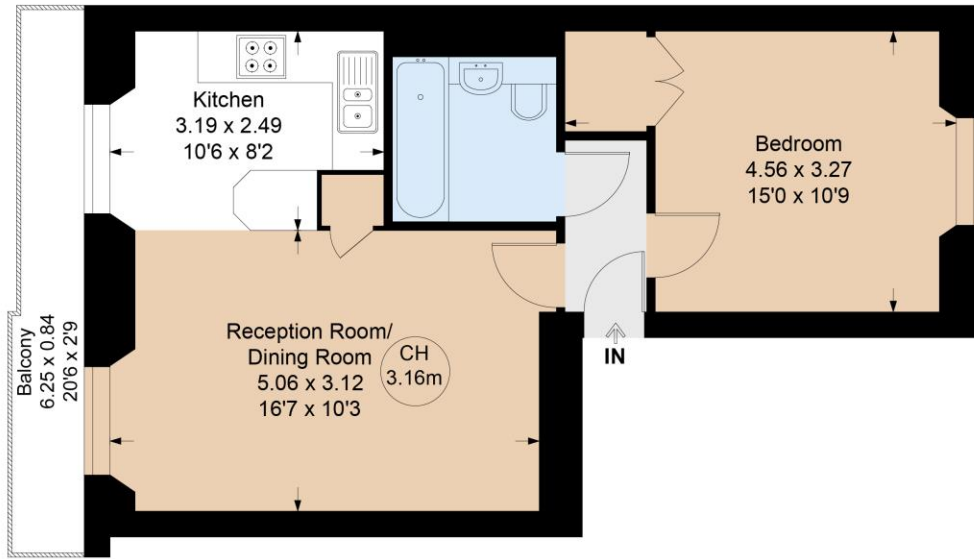
Winkworth

for every step...

Gloucester Terrace, W2

Approximate Gross Internal Area = 42.74 sq m / 460 sq ft

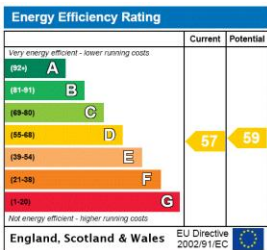
Key :
CH - Ceiling Height



First Floor

Not to scale, for guidance only and must not be relied upon as a statement of fact.
All measurements and areas are approximate only

This floorplan is for illustration purposes only and is not to scale. The position and size of doors, windows, appliances and other features are approximate.



Tenure: Leasehold

Term: 176 year and 4 months

Service Charge: About. £2,400 per annum

Ground Rent: £10.00 Annually (subject to increase)

Council Tax Band: D

Where no figures are shown, we have been unable to ascertain the information. All figures that are shown were correct at the time of printing.

West End | 020 7240 3322 | westend@winkworth.co.uk

Winkworth

for every step...

winkworth.co.uk

Winkworth wishes to inform prospective buyers and tenants that these particulars are a guide and act as information only. All our details are given in good faith and believed to be correct at the time of printing but they don't form part of an offer or contract. No Winkworth employee has authority to make or give any representation or warranty in relation to this property. All fixtures and fittings, whether fitted or not are deemed removable by the vendor unless stated otherwise and room sizes are measured between internal wall surfaces, including furnishings.