

MONTROSE WAY, LONDON, SE23
£600,000 FREEHOLD

LOVELY TWO BEDROOM MID TERRACES HOUSE IN CLOSE PROXIMITY TO FOREST HILL STATION!

Forest Hill | | foresthill@winkworth.co.uk



DESCRIPTION:

This stunning two bedroom mid terrace home has been finished to the highest standard, boasting large open plan living space and two double bedrooms. Viewing is highly advised.

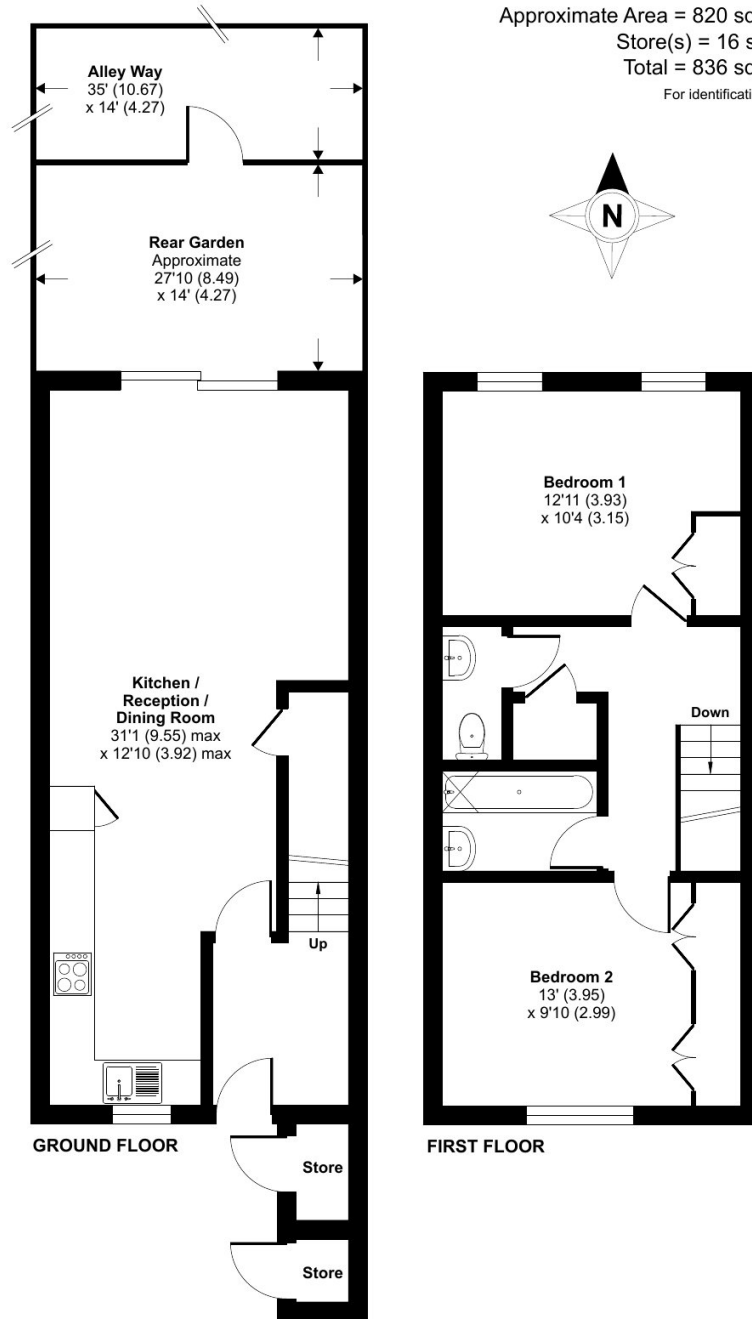
Nestled in the heart of South East London, this charming residence offers the perfect blend of comfort, style, and convenience. Just a stone's throw from local parks, cafes, and excellent transport links, this property is designed to suit modern living while maintaining a welcoming, homely atmosphere.





Montrose Way, London, SE23

Approximate Area = 820 sq ft / 76.2 sq m
 Store(s) = 16 sq ft / 1.5 sq m
 Total = 836 sq ft / 77.7 sq m
 For identification only - Not to scale



Floor plan produced in accordance with RICS Property Measurement Standards incorporating International Property Measurement Standards (IPMS2 Residential). © n1checom 2025. Produced for Winkworth Forest Hill and New Cross. REF: 1266547

This floorplan is for illustration purposes only and is not to scale. The position and size of doors, windows, appliances and other features are approximate.

Tenure: Freehold

