



FIRST FLOOR, FINSBURY PARK ROAD, LONDON, N4
£550,000 SHARE OF FREEHOLD

**A BRIGHT, TWO DOUBLE BEDROOM PERIOD
 CONVERSION CLOSE TO TUBES AND LOCAL
 PARKS IN N4.**

Highbury | 0207 989 7000 | highbury@winkworth.co.uk

Winkworth

winkworth.co.uk

See things differently

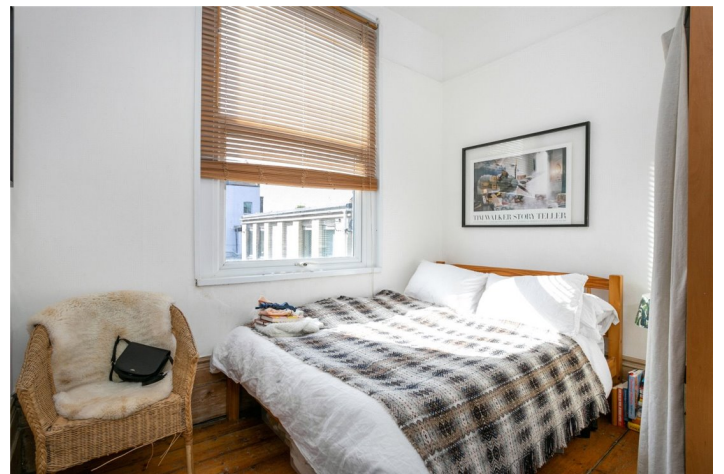


DESCRIPTION:

A wonderful, two double bedroom period conversion set across the first floor of this handsome Victorian building in N4. Standing at 579 sqft, the property offers a wealth of charm, from original floorboards to incredibly bright sash windows with an abundance of natural light pouring from Brownswood Road. Accommodation comprises of a well proportioned reception room while the separate kitchen leading off the reception room is large enough to include a dining table and ample storage/worktop space. Both bedrooms are genuine doubles and are positioned on split levels. The property is completed with a modern family bathroom and is offered to the market on a chain free basis.

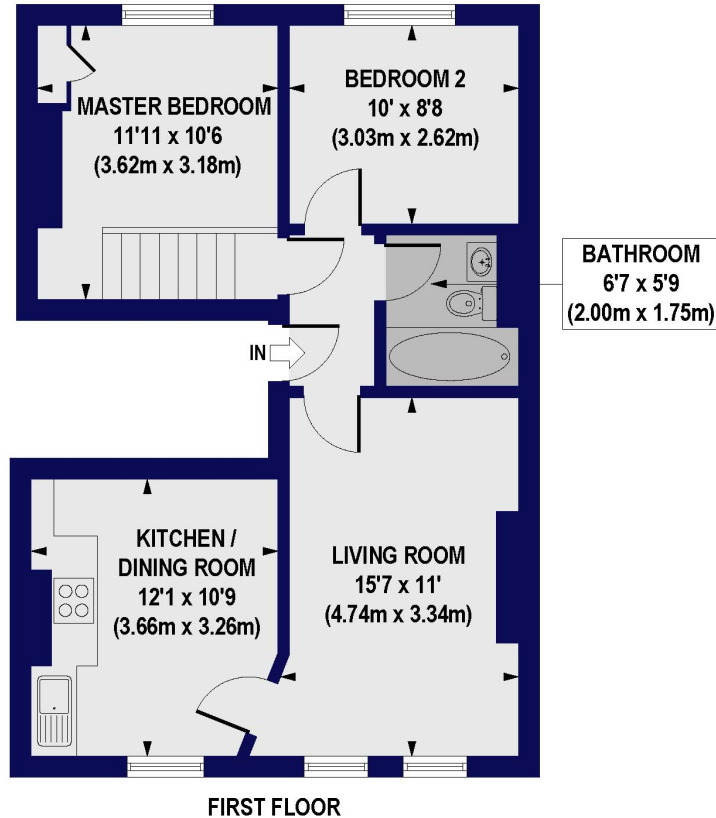
Finsbury Park Road is a peaceful, tree-lined, no through road and is perfectly located for a selection of fantastic transport links as well as local shops. The village atmosphere at Highbury Barn and Mountgrove Road are just a short distance away along with numerous independent shops, cafes and restaurants. The green open spaces of both Clissold and Finsbury Park are both just moments from the property. It is also a very short distance from two fantastic schools, one of which has been rated outstanding at Ofsted. An array of transport links offers effortless access across London with Arsenal and Finsbury Park tube providing the closest underground links on the Piccadilly Line and Victoria Line. Numerous bus services located on Blackstock road offer routes to the City, West End and Angel and international transport is facilitated from St Pancras.

Winkworth



Winkworth

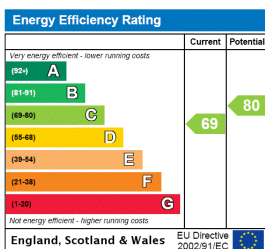
Finsbury Park Road, N4
Approx. Gross Internal Floor Area 579 sq. ft / 53.81 sq. m



All measurements of walls, doors, windows, fittings and appliances, including their size and location, are shown as standard sizes and do not constitute any warranty or representation by the seller, their agent or CP Creative. Any intending purchaser must satisfy himself by inspection or otherwise as to the correctness of the information contained in these plans. This plan is for illustrative purposes only and should be used as such by any prospective purchasers.

Winkworth

This floorplan is for illustration purposes only and is not to scale. The position and size of doors, windows, appliances and other features are approximate.



Highbury | 0207 989 7000 | highbury@winkworth.co.uk

Winkworth

winkworth.co.uk

See things differently

Winkworth wishes to inform prospective buyers and tenants that these particulars are a guide and act as information only. All our details are given in good faith and believed to be correct at the time of printing but they don't form part of an offer or contract. No Winkworth employee has authority to make or give any representation or warranty in relation to this property. All fixtures and fittings, whether fitted or not are deemed removable by the vendor unless stated otherwise and room sizes are measured between internal wall surfaces, including furnishings.