



ETON GROVE, KINGSBURY, LONDON, NW9
£625,000 FREEHOLD

CHARMING THREE BEDROOM HOUSE

Kingsbury | 020 8204 0000 | kingsbury@winkworth.co.uk

Winkworth

for every step...

winkworth.co.uk



Welcome to this well-presented three-bedroom mid-terrace property, a charming blend of modern convenience and classic appeal. Nestled in a sought-after residential area, this delightful property offers an inviting and comfortable living space, perfect for families. Boasting a spacious double reception room, featuring tasteful décor and ample natural light. The seamless flow leads you to a contemporary kitchen, equipped with stylish cabinetry, and plenty of counter space. Upstairs, the property presents three generously sized bedrooms, each thoughtfully designed to provide a restful retreat complete with integrated storage space. The shower room features modern fixtures and finishes, completing the upper level. Outside continues to impress with a gorgeous rear garden, perfect for outdoor relaxation and alfresco dining. Additional benefits of this property include off street parking, and a convenient location, close to local amenities, schools, and excellent transport links, making it an ideal choice for commuters. With its impeccable presentation and thoughtful layout, this home offers a wonderful opportunity to own a beautiful home in a desirable area. Contact us today to arrange a viewing and experience all that this charming home has to offer.



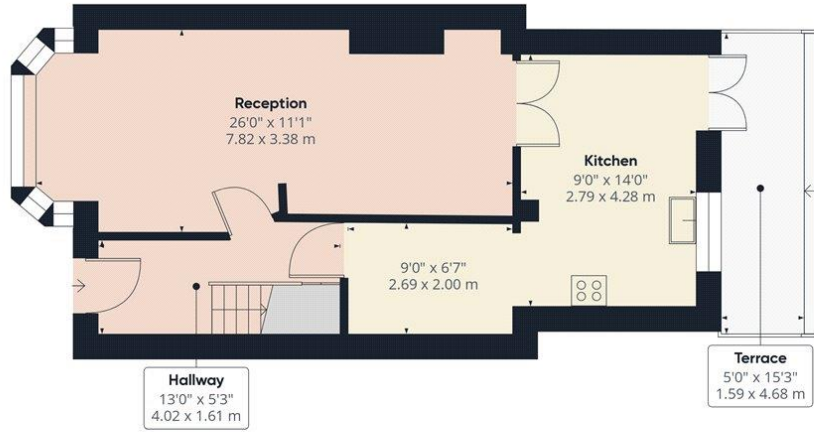
Winkworth

for every step...

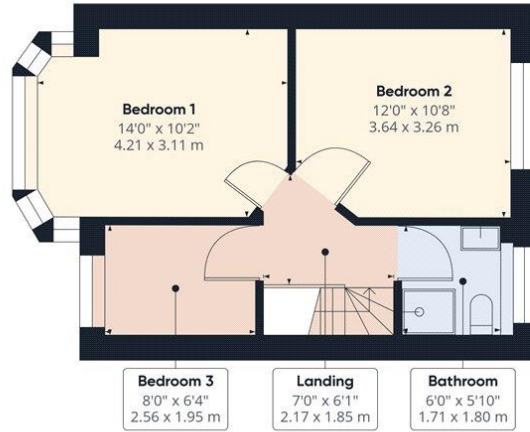


Winkworth

for every step...



Ground Floor



Floor 1

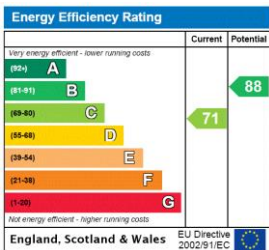
Approximate total area⁽¹⁾
 917.41 ft²
 85.23 m²

(1) Excluding balconies and terraces

While every attempt has been made to ensure accuracy, all measurements are approximate, not to scale. This floor plan is for illustrative purposes only.

GIRAFFE360

This floorplan is for illustration purposes only and is not to scale. The position and size of doors, windows, appliances and other features are approximate.



Tenure: Freehold

Council Tax Band: D - Brent

Where no figures are shown, we have been unable to ascertain the information. All figures that are shown were correct at the time of printing.

Kingsbury | 020 8204 0000 | kingsbury@winkworth.co.uk



for every step...

winkworth.co.uk

Winkworth wishes to inform prospective buyers and tenants that these particulars are a guide and act as information only. All our details are given in good faith and believed to be correct at the time of printing but they don't form part of an offer or contract. No Winkworth employee has authority to make or give any representation or warranty in relation to this property. All fixtures and fittings, whether fitted or not are deemed removable by the vendor unless stated otherwise and room sizes are measured between internal wall surfaces, including furnishings.