



VENETIA CLOSE, READING, BERKSHIRE, RG4 8UG
£1,895 PER MONTH UNFURNISHED

**A SEMI-DETACHED FAMILY HOME LOCATED
ON A QUIET CLOSE WITHIN EASY REACH OF
AMENITIES. UNFURNISHED.**

Reading | 0118 4022 300 | reading@winkworth.co.uk

Winkworth

for every step...

winkworth.co.uk



DESCRIPTION:

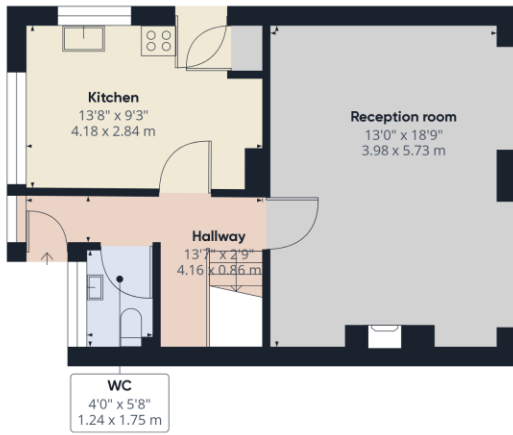
This semi-detached family home is located on a popular and quiet residential close within easy reach of Reading station, town centre and central Caversham. The property is within catchment of good local schools and is situated close to the Clayfield Copse recreational grounds. The accommodation comprises; a modern dual aspect kitchen with appliances, W/C and extended, open-plan reception space with access to the rear garden. Upstairs are four neutrally decorated bedrooms and there is a modern family bathroom. Externally is an enclosed garden with mature shrubs and to the front of the property is a driveway and garage. Available now. Unfurnished.

AT A GLANCE

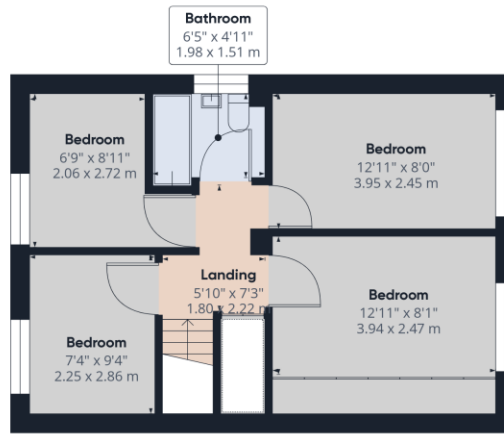
- Semi-Detached Family Home
- Four-Bedrooms
- Quiet Location
- Located within Good School Catchments
- Enclosed, Private Garden
- Off-Road Parking
- Council Tax Band E
- Unfurnished



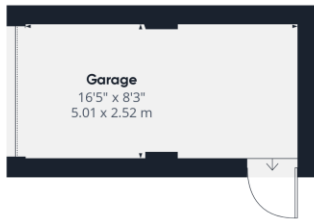




Ground Floor Building 1



Floor 1 Building 1



Ground Floor Building 2

Approximate total area⁽¹⁾
1069.91 ft²
99.4 m²

(1) Excluding balconies and terraces

While every attempt has been made to ensure accuracy, all measurements are approximate, not to scale. This floor plan is for illustrative purposes only.

GIRAFFE360

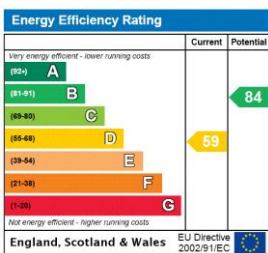
This floorplan is for illustration purposes only and is not to scale. The position and size of doors, windows, appliances and other features are approximate.

Deposit: £2,186.54

Holding Deposit: £437.30

Council Tax Band: E

Where no figures are shown, we have been unable to ascertain the information. All figures that are shown were correct at the time of printing.



Reading | 0118 4022 300 | reading@winkworth.co.uk

Winkworth

for every step...

winkworth.co.uk

Winkworth wishes to inform prospective buyers and tenants that these particulars are a guide and act as information only. All our details are given in good faith and believed to be correct at the time of printing but they don't form part of an offer or contract. No Winkworth employee has authority to make or give any representation or warranty in relation to this property. All fixtures and fittings, whether fitted or not are deemed removable by the vendor unless stated otherwise and room sizes are measured between internal wall surfaces, including furnishings.