



2  1  1  EPC = D

FLAT 2, RODNEY COURT, 3 RODNEY DRIVE, MUDEFORD BH23 3JG PRICE: £275,000 SHARE OF FREEHOLD

Winkworth
for every step...

An immaculately presented ground floor flat of approx. 730sqft in this fantastic location, just a short stroll from Mundeford Quay and the sandy Avon Beach.

Flat 2 Rodney Court, 3 Rodney Drive, Mundeford BH23 3JG

Price: £275,000

Tenure: Share of Freehold

01425 274444

mundeford@winkworth.co.uk

Situation:

The property is situated within easy reach of some of the area's most beautiful beaches and unspoilt coastline with Mundeford's sandy Avon Beach and Friars Cliff Beach easily accessible. A short car ride from the property is the New Forest National Park offering some of the country's most stunning countryside interwoven with ancient woodlands.

The nearby historic town of Christchurch has a wide range of shops, restaurants and banks. More extensive facilities can be found further afield at Bournemouth and Southampton.

Christchurch Railway Station provides a fast and regular service to Bournemouth, Southampton and London Waterloo. Bournemouth and Southampton International Airports are also within a short drive.

Description:

An immaculately presented ground floor flat of approx. 730sqft in this fantastic location, just a short stroll from Mundeford Quay and the sandy Avon Beach.

Communal front door with secure entry phone system. Door to entrance hall with doors to all rooms;

Dual aspect lounge/dining room with fitted shutters and views over communal gardens at front and rear.

Kitchen has been well fitted with a range of base and eye level units and drawers, good range of integrated appliances.

Principal bedroom with front aspect window and space for wardrobes.

Bedroom two with front aspect window and space for wardrobe.

Family bathroom with bath and shower over, wash hand basin, WC, and door to airing cupboard.

Garage in nearby block with up and over door, car cleaning area, communal bin storage area, communal washing lines, communal outdoor seating/picnic area and well maintained communal gardens.

Tenure: Share of Freehold

Maintenance & Service charge: Approx. £1000 every 6 months.

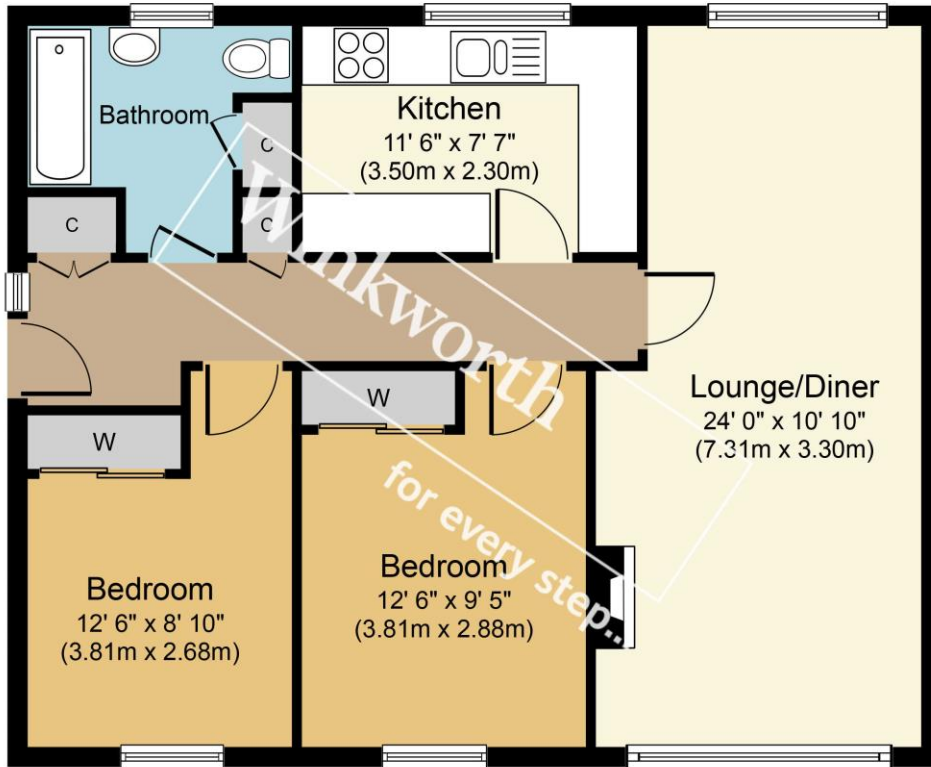
Lease attached: Remainder of 999 years

BCP Council: Tax Band "C"

At a glance...

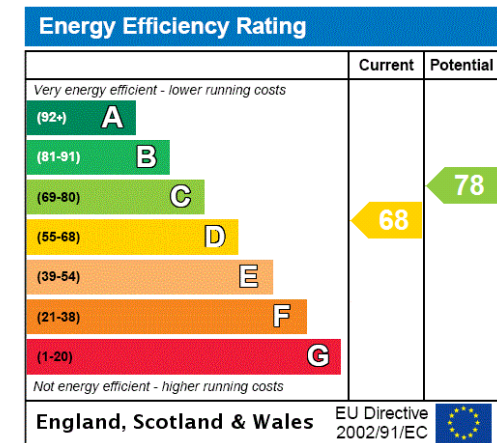
- Purpose built ground floor flat
- Two double bedrooms with built in wardrobes
- Modern refitted kitchen with mostly integrated appliances Spacious dual aspect lounge/diner with fitted shutters
- Family bathroom
- Entrance hall with storage cupboards
- Security entry phone system & well-kept communal areas Garage in a block and casual parking area
- Share of freehold
- Maintenance approx. £1000 every 6 months
- Envidable location within walking distance of local schools, shops & award winning beaches





Approximate Floor Area
723 sq. ft.
(67.1 sq. m.)

Whilst every attempt has been made to ensure the accuracy of the floor plan contained here, measurements of doors, windows, rooms and any other items are approximate and no responsibility is taken for any error, omission, or mis-statement. The measurements should not be relied upon for valuation, transaction and/or funding purposes. This plan is for illustrative purposes only and should be used as such by any prospective purchaser or tenant. The services, systems and appliances shown have not been tested and no guarantee as to their operability or efficiency can be given.
Copyright V360 Ltd 2024 | www.houseviz.com



Winkworth wishes to inform prospective buyers and tenants that these particulars are a guide and act as information only. All our details are given in good faith and believed to be correct at the time of printing, but they don't form part of an offer or contract. No Winkworth employee has authority to make or give any representation or warranty in relation to this property. All fixtures and fittings, whether fitted or not are deemed removable by the vendor unless stated otherwise and room sizes are measured between internal wall surfaces, including furnishings.

Mundeford | 01425 274444 | mundeford@winkworth.co.uk



for every step...