



BATHURST GARDENS, LONDON, NW10
£849,950 SHARE OF FREEHOLD

AN INCREDIBLE THREE BEDROOM, TWO BATHROOM, SPLIT LEVEL FLAT WITH PRIVATE ENTRANCE IN A DOUBLE FRONTED PERIOD CONVERSION.

Kensal Rise & Queens Park | 0208 960 4947 | kensalrise@winkworth.co.uk

Winkworth



LOCATION:

Bathurst Gardens is in a popular location within Kensal Rise providing easy access to Kensal Green Underground & Overground, as well as all the amenities of College Road including the Island Pub, L'Angolo Italian and Sonora Coffee shop. Furthermore Chamberlayne Road is less than a 1/4 mile from the flat and offers a further array of shops Gastropubs and restaurants.



Winkworth

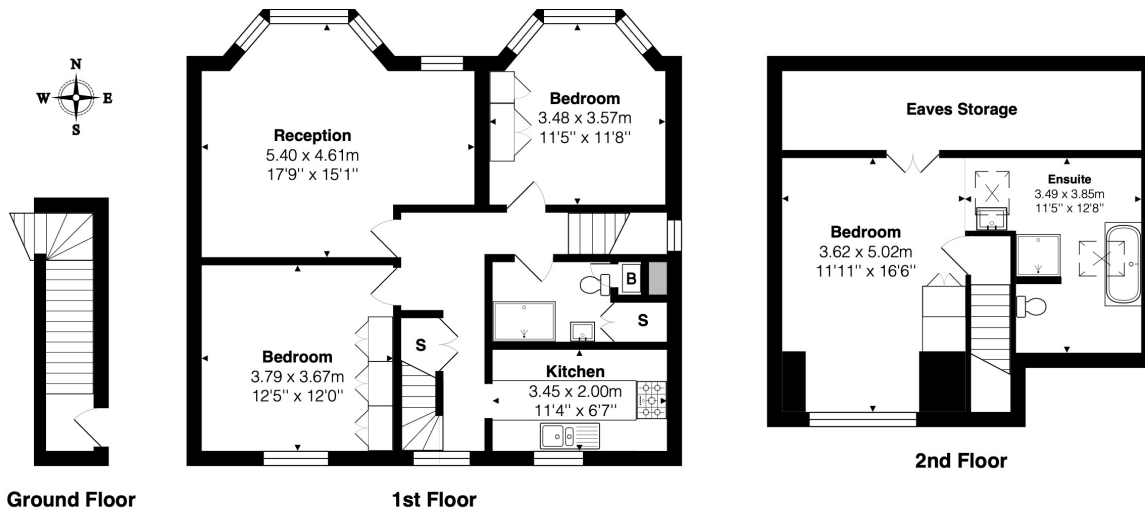


DESCRIPTION:

A unique and superb double fronted flat with private entrance and arranged over two floors with over 1,322 sq ft. of internal living space. The first floor comprises of a large reception and dining room with sash bay window and feature fire place, two double bedrooms, separate modern kitchen and tiled shower room.

The second floor is now the principle bedroom suite, with large en-suite bathroom with separate shower. Overall, this property is in excellent condition and not one to be missed. Viewing therefore comes highly recommended.

Winkworth



Total Area: 122.8 m² ... 1322 ft²
 All measurements are approximate and for display purposes only

This floorplan is for illustration purposes only and is not to scale. The position and size of doors, windows, appliances and other features are approximate.

Kensal Rise & Queens Park | 0208 960 4947 | kensalrise@winkworth.co.uk

Winkworth

winkworth.co.uk

See things differently

winkworth wishes to inform prospective buyers and tenants that these particulars are a guide and act as information only. All our details are given in good faith and believed to be correct at the time of printing but they don't form part of an offer or contract. No Winkworth employee has authority to make or give any representation or warranty in relation to this property. All fixtures and fittings, whether fitted or not are deemed removable by the vendor unless stated otherwise and room sizes are measured between internal wall surfaces, including furnishings.