



BLYTHE VALE, LONDON, UNITED KINGDOM, SE6
£800,000 FREEHOLD

Nestled on the borders of Catford and Forest Hill, this stunning three-bedroom family home offers the perfect blend of contemporary design and natural beauty. Spanning over 1,200 sqft of beautifully presented living space, the property exudes charm and elegance at every turn.

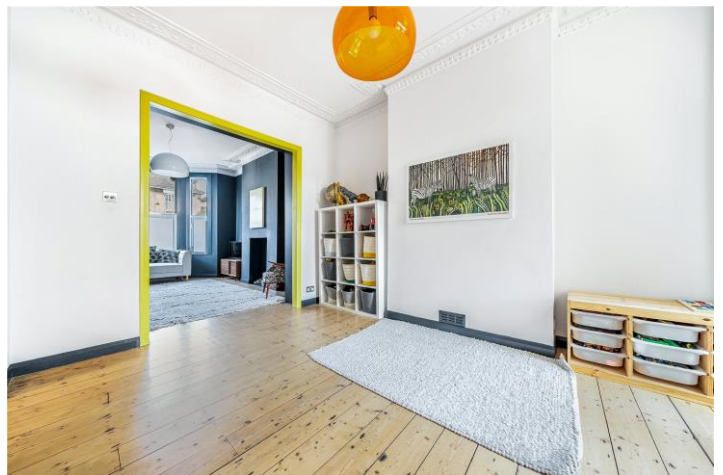
Forest Hill | | foresthill@winkworth.co.uk



DESCRIPTION:

This stylish three-bedroom home offers spacious living with a bright double reception room, modern kitchen/diner, and a stylish bathroom. With generous bedrooms, a well-maintained garden, and ample storage, it provides a comfortable and practical living space for the whole family.

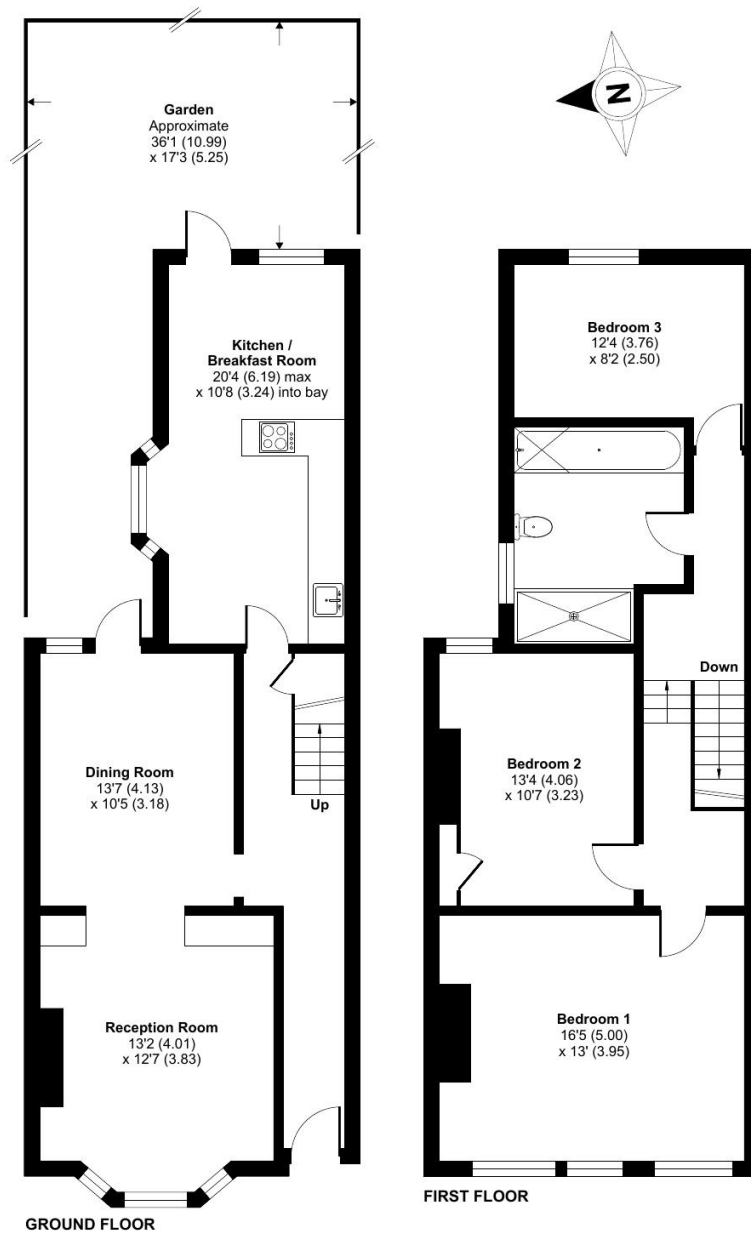




Blythe Vale, London, SE6

Approximate Area = 1356 sq ft / 125.9 sq m

For identification only - Not to scale



Floor plan produced in accordance with RICS Property Measurement Standards incorporating International Property Measurement Standards (IPMS2 Residential). © n/checom 2025. Produced for Winkworth Forest Hill and New Cross. REF: 1256151

This floorplan is for illustration purposes only and is not to scale. The position and size of doors, windows, appliances and other features are approximate.

Tenure: Freehold

