



DRAYTON PARK, LONDON, N5  
**£750,000 LEASEHOLD**

**A SENSATIONAL, TWO DOUBLE BEDROOM,  
TWO BATHROOM APARTMENT FINISHED TO  
A VERY HIGH STANDARD.**

Islington | 0207 354 2480 | [islington@winkworth.co.uk](mailto:islington@winkworth.co.uk)

**Winkworth**

[winkworth.co.uk](http://winkworth.co.uk)

See things differently





## DESCRIPTION:

A stunning, two double bedroom, two bathroom apartment positioned across the first floor of this popular modern building in Highbury. Standing at 1,057sqft, the property has recently been refurbished to a very high standard by the current owners and benefits from a secure, underground car parking space. Accommodation comprises of a wonderfully spacious living room with three west facing, large windows allowing plentiful natural light to pour in, a bespoke kitchen with breakfast island creating the perfect entertaining space. Both bedrooms are good sized double bedrooms and include fitted wardrobes, while the master has access to a useful en-suite. The property is completed with a family sized bathroom and plentiful storage throughout.

100 Drayton Park offers a vast amount of additional extras, such as a concierge, beautifully kept communal gardens, multiple lifts and an unbelievable roof terrace spanning the full area of the entire building with unrivalled London skyline views.

Drayton Park is positioned close to highly renowned local amenities, including Godfreys butchers, La Fromagerie, Da Mario's Deli, Bourne Fishmongers and Highbury Vintners all of which are hugely popular with locals as well as drawing those from further afield.

The property offers some fantastic transport links with Highbury & Islington station (Victoria and Overground) within a short distance, as is both Arsenal underground (Piccadilly line) and Drayton Park taking you directly to Moorgate. There are a number of strong bus routes taking you into the West End and the City and international links are facilitated from St Pancras.

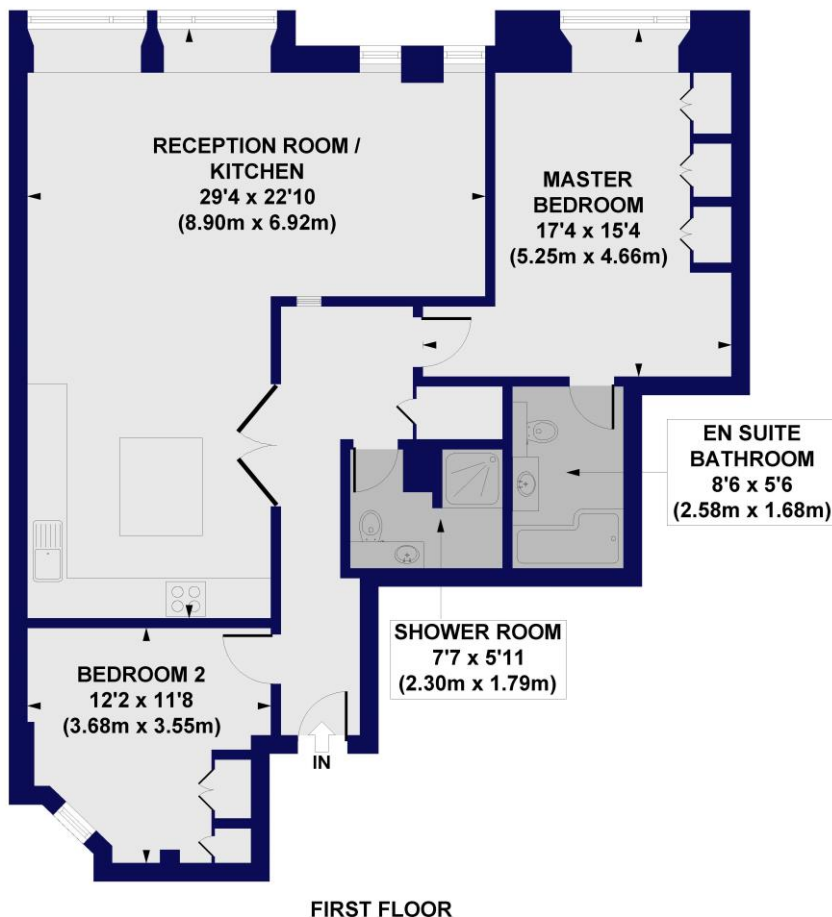
**Winkworth**





**Winkworth**

**Drayton Park, N5**  
**Approx. Gross Internal Floor Area 1057 sq. ft / 98.17 sq. m**



All measurements of walls, doors, windows, fittings and appliances, including their size and location, are shown as standard sizes and do not constitute any warranty or representation by the seller, their agent or CP Creative. Any intending purchaser must satisfy himself by inspection or otherwise as to the correctness of the information contained in these plans. This plan is for illustrative purposes only and should be used as such by any prospective purchasers.

**Winkworth**

This floorplan is for illustration purposes only and is not to scale. The position and size of doors, windows, appliances and other features are approximate.

Islington | 0207 354 2480 | [islington@winkworth.co.uk](mailto:islington@winkworth.co.uk)

**Winkworth**

[winkworth.co.uk](http://winkworth.co.uk)

See things differently

Winkworth wishes to inform prospective buyers and tenants that these particulars are a guide and act as information only. All our details are given in good faith and believed to be correct at the time of printing but they don't form part of an offer or contract. No Winkworth employee has authority to make or give any representation or warranty in relation to this property. All fixtures and fittings, whether fitted or not are deemed removable by the vendor unless stated otherwise and room sizes are measured between internal wall surfaces, including furnishings.