



THURLOE SQUARE, SOUTH KENSINGTON, LONDON, SW7
£3,500 PER WEEK UNFURNISHED

DESCRIPTION:

An exceptionally large and newly refurbished upper maisonette spanning the first, second, third, and fourth floors of a period terraced house, offering stunning views, a roof terrace at the rear, and a balcony overlooking Thurloe Square gardens.

Knightsbridge & Chelsea | 0207 589 6616 | knightsbridge@winkworth.co.uk

Winkworth

for every step...

winkworth.co.uk

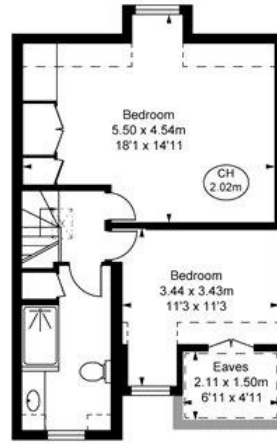
Thurloe Square, SW7

■ Approximate Gross Internal Area
212.42 sq m / 2,287 sq ft
■ Eaves Storage
3.17 sq m / 34 sq ft

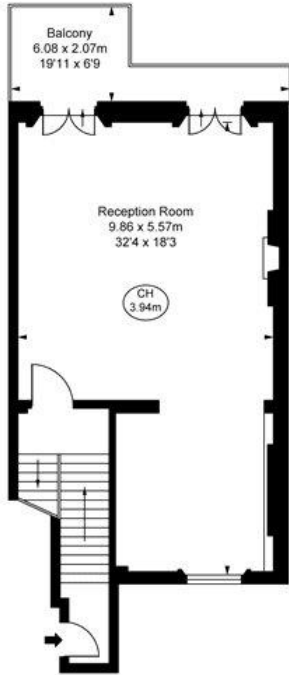
Total Areas Shown On Plan
215.59 sq m / 2,321 sq ft

(Including restricted height
under 1.5m □ □ □ □ □)

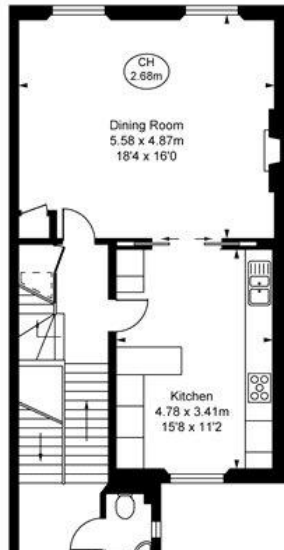
(CH = Ceiling Heights)



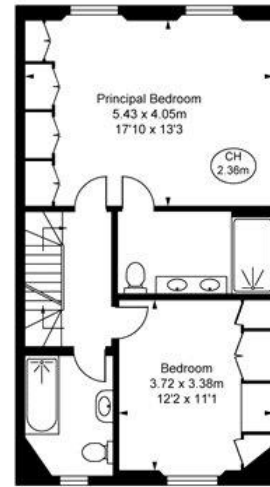
Fourth Floor
Approximate Gross Internal Area
42.55 sq m / 458 sq ft



First Floor
Approximate Gross Internal Area
55.66 sq m / 599 sq ft



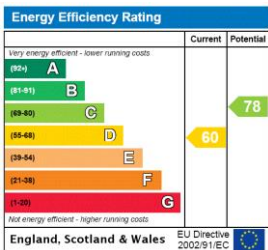
Second Floor
Approximate Gross Internal Area
60.69 sq m / 653 sq ft



Third Floor
Approximate Gross Internal Area
53.53 sq m / 576 sq ft

This plan is not to scale. It is for guidance and not for valuation purposes.
All measurements and areas are approximate only, and have been prepared in accordance with the current edition of the RICS Code of Measuring Practice.
© Fulham Performance

This floorplan is for illustration purposes only and is not to scale. The position and size of doors, windows, appliances and other features are approximate.



Deposit: £21,000

Holding Deposit: £3,500 (or equivalent to one week's rent)

Council Tax Band: H

Where no figures are shown, we have been unable to ascertain the information.
All figures that are shown were correct at the time of printing.

Knightsbridge & Chelsea | 0207 589 6616 | knightsbridge@winkworth.co.uk



for every step...

winkworth.co.uk

Winkworth wishes to inform prospective buyers and tenants that these particulars are a guide and act as information only. All our details are given in good faith and believed to be correct at the time of printing but they don't form part of an offer or contract. No Winkworth employee has authority to make or give any representation or warranty in relation to this property. All fixtures and fittings, whether fitted or not are deemed removable by the vendor unless stated otherwise and room sizes are measured between internal wall surfaces, including fumishings.