



## KEATS HOUSE, LONDON, SW1V

£525,000

LEASEHOLD

### At a glance...

- Two Double Bedrooms
- Large Reception
- Private Balcony
- River Views
- No Onward Chain
- Council Tax Band: C

**Winkworth**

for every step...



Energy Efficiency Rating		Current	Potential
Very energy efficient - lower running costs			
(92-100)	<b>A</b>		
(81-91)	<b>B</b>		
(69-80)	<b>C</b>	69	76
(55-68)	<b>D</b>		
(39-54)	<b>E</b>		
(21-38)	<b>F</b>		
(1-20)	<b>G</b>		
Not energy efficient - higher running costs			
England, Scotland & Wales		EU Directive 2002/91/EC	

## KEATS HOUSE, LONDON, SW1V

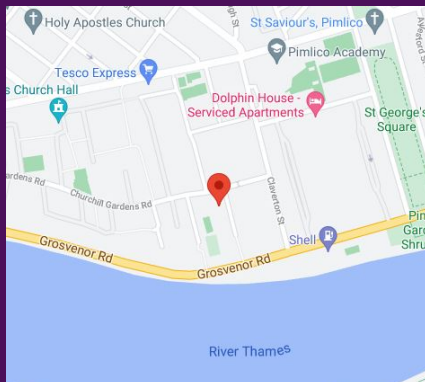
£525,000

LEASEHOLD

A well presented, two double bedroom flat located in this well maintained purpose built block on the edge of the popular Churchill Gardens. The property boasts wonderful views towards the River Thames and Battersea Power Station and would make an ideal first time buy or buy to let investment.

Accommodation comprises a large bright reception room, modern fitted kitchen, two double bedrooms with storage, family bathroom and separate W.C. To the rear of the property there is a generous private balcony which is perfect for al fresco dining.

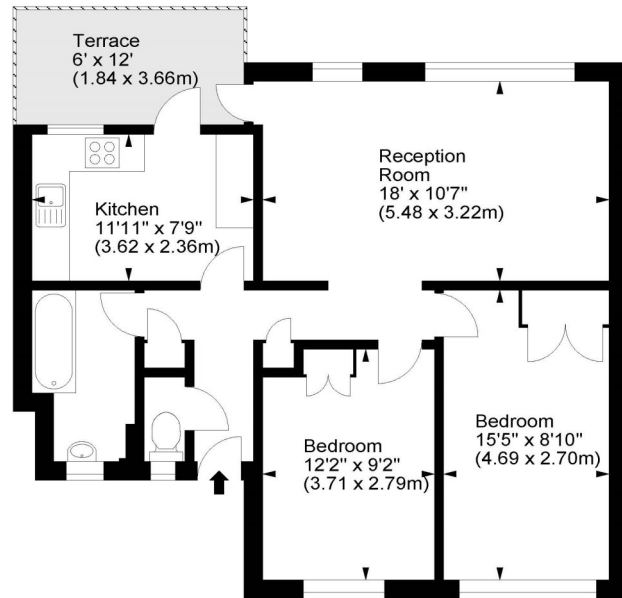
Situated within moments of the superb selection of local shops, cafes and restaurants on Lupus Street, the 'Moreton Triangle' and Wilton Road. The extensive collection of retail outlets and theatres at nearby Victoria are also within walking distance as are the green open spaces of St George's Square and Battersea Park.



winkworth wishes to inform prospective buyers and tenants that these particulars are a guide and act as information only. All our details are given in good faith and believed to be correct at the time of printing but they don't form part of an offer or contract. No winkworth employee has authority to make or give any representation or warranty in relation to this property. All fixtures and fittings, whether fitted or not are deemed removable by the vendor unless stated otherwise and room sizes are measured between internal wall surfaces, including fireplaces.

### Keats House, SW1

Approx. Gross Internal Area  
684 Sq Ft - 63.54 Sq M



Fifth Floor

For illustration purposes only. Not to scale.  
All measurements are taken and shown at floor level.  
www.r3photography.co.uk © Photography / Floor Plans / Lease Plans / EPCs



Pimlico & Westminster

020 7828 1786

pimlico@winkworth.co.uk

winkworth.co.uk/pimlico-westminster

**Winkworth**

for every step...