



CLIFFORD GARDENS, LONDON, NW10
£1,150,000 FREEHOLD

**CHARMING THREE-BEDROOM VICTORIAN HOME WITH
EXCEPTIONAL DEVELOPMENT POTENTIAL**

Kensal Rise & Queens Park | 0208 960 4947 | kensalrise@winkworth.co.uk

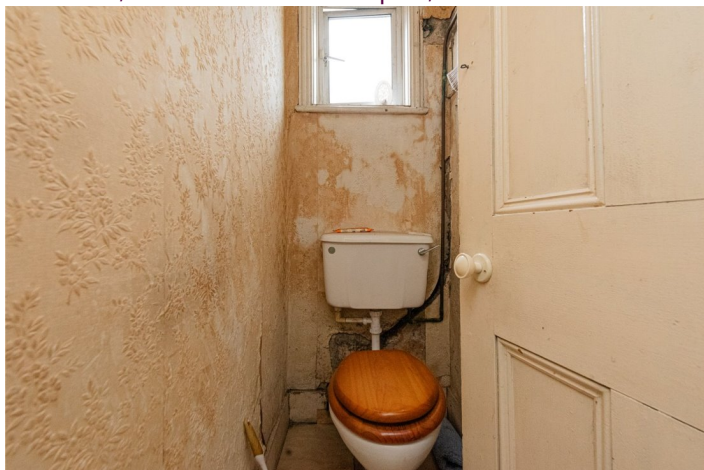
Winkworth

winkworth.co.uk

See things differently



LOCATION: Clifford Gardens, located in the Kensal Rise area of London, is a charming residential street known for its attractive period properties and vibrant community. A key educational institution nearby is Ark Franklin Primary Academy on Harvist Road, a well-regarded school rated 'Good' by Ofsted, with 'Outstanding' leadership and management, offering a broad and ambitious curriculum for children aged 3 to 11. The area benefits from proximity to Chamberlayne Road and College Road, where residents can enjoy a diverse selection of cafés, restaurants, independent shops, and boutiques. There are also nearby parks providing green spaces for recreation, while excellent transport links, including bus routes and train stations, offer easy access to central London. With its blend of quality education, local amenities, and convenient transport, Clifford Gardens is a desirable location for families and professionals alike.

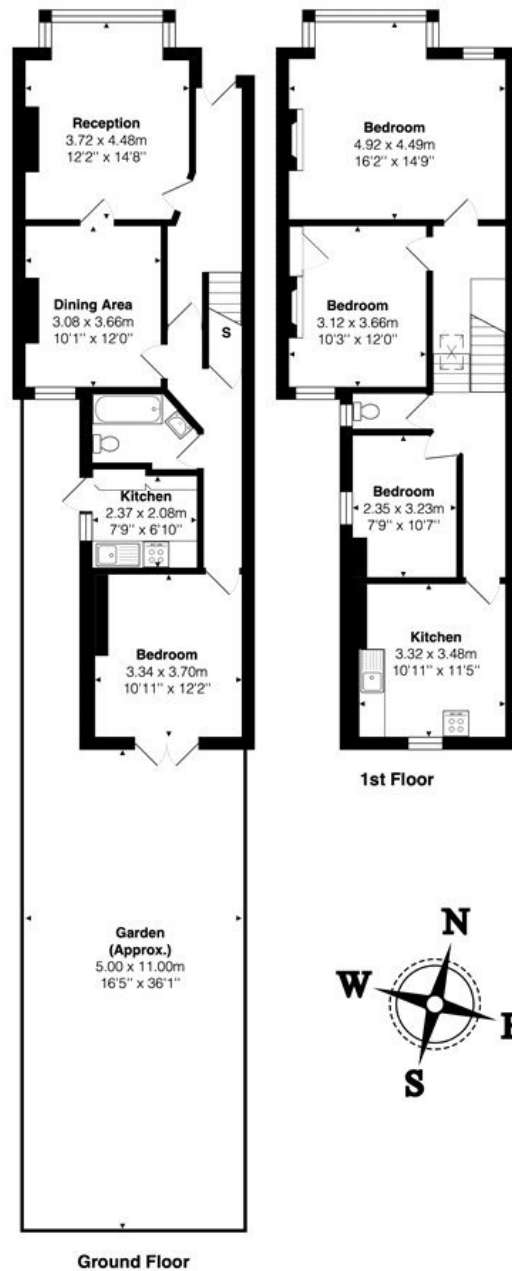


Winkworth



DESCRIPTION: Nestled in a sought-after location, this three-bedroom mid-terrace Victorian family home presents an exciting opportunity for those looking to create a truly stunning residence. Currently unmodernised, the property retains much of its original character and offers immense potential for transformation into a spacious four- or five-bedroom home through thoughtful renovation and extension (subject to planning permission). Boasting generous room proportions, elegant period features, and a desirable south-facing garden, this property is a rare find for buyers seeking a project with scope to add significant value. With the potential to extend to the rear and into the loft, the home could be reimagined into a contemporary space while preserving its classic Victorian charm.

Winkworth



Total Area: 130.9 m² ... 1409 ft² (excluding garden)

All measurements are approximate and for display purposes only

This floorplan is for illustration purposes only and is not to scale. The position and size of doors, windows, appliances and other features are approximate.

Kensal Rise & Queens Park | 0208 960 4947 | kensalrise@winkworth.co.uk



winkworth.co.uk

See things differently

winkworth wishes to inform prospective buyers and tenants that these particulars are a guide and act as information only. All our details are given in good faith and believed to be correct at the time of printing but they don't form part of an offer or contract. No winkworth employee has authority to make or give any representation or warranty in relation to this property. All fixtures and fittings, whether fitted or not are deemed removable by the vendor unless stated otherwise and room sizes are measured between internal wall surfaces, including furnishings.