



STIRLING COURT, TAVISTOCK STREET, LONDON, WC2E
£750,000 LEASEHOLD

AN IMPOSING TOP FLOOR 1 BEDROOM EX-WESTMINSTER FLAT (4th FLOOR WALK-UP) IN THE HEART OF COVENT GARDEN JUST OFF DRURY LANE.

Leasehold: Approx. 174 Years Remaining | Service Charge: Approx. £1,200 per annum | Ground Rent: Approx. £10 Annually (subject to increase) | Council Tax: Band D

West End | 020 7240 3322 | westend@winkworth.co.uk

Winkworth

for every step...

winkworth.co.uk



DESCRIPTION:

The flat is in a Victorian block that is very well kept with a communal garden below on the ground floor. The flat itself is spacious, light, in a lovely condition and fully fitted to a high standard with high ceilings and beautifully kept by the present owner. The position is good being near Kings College close to The Strand, The Piazza just around the corner and Covent Garden tube as well as the facilities of UCL and LSE being a 15 min walk away. You are right in the heart of theatre land , so early viewings highly recommended.

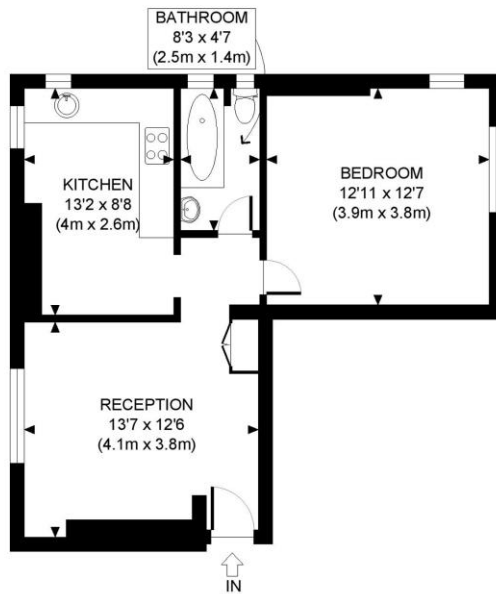


for every step...



Winkworth

for every step...



FOURTH FLOOR
GROSS INTERNAL
FLOOR AREA 522 SQ FT

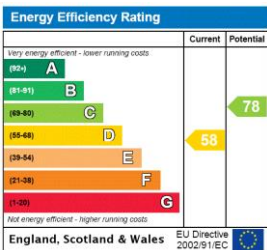
APPROX. GROSS INTERNAL FLOOR AREA: 522 SQ FT/ 48 SQM

Winkworth

This plan is for illustrative purposes only and should be used as such by any prospective client. Whilst every attempt has been made to ensure the accuracy of the Floor Plan contained here, measurements of the doors, windows, rooms and any other items are approximate and no responsibility is taken for any errors, omissions, or misstatement. The services, systems and appliances shown have not been tested and no guarantee as to the operability or efficiency can be given.

PROPERTY PHOTO PLANS
THE STOP GAP FOR PROPERTY MARKETING

This floorplan is for illustration purposes only and is not to scale. The position and size of doors, windows, appliances and other features are approximate.



West End | 020 7240 3322 | westend@winkworth.co.uk

Winkworth

for every step...

winkworth.co.uk

Winkworth wishes to inform prospective buyers and tenants that these particulars are a guide and act as information only. All our details are given in good faith and believed to be correct at the time of printing but they don't form part of an offer or contract. No Winkworth employee has authority to make or give any representation or warranty in relation to this property. All fixtures and fittings, whether fitted or not are deemed removable by the vendor unless stated otherwise and room sizes are measured between internal wall surfaces, including furnishings.