



ALFRED STREET, SOMERSET, BA1
£399,999 LEASEHOLD



**Georgian apartment | prime location | 1 bedroom
apartment | private entrance | no through road | central
Bath | Grade II Listed building.**

Entrance hall | kitchen and living room | double bedroom |
shower room | courtyard with freestanding bath.
Courtyard | vaults | communal vaults.

A beautifully presented apartment on Alfred Street, a
sought after no through road opposite Bath Assembly
Rooms, right in the centre of Bath.

The apartment has been lovingly renovated and the result
is a beautiful living space.

There is a private entrance which is accessed through the
front courtyard into a spacious entrance hall with feature
red brick floor.

The living space is beautiful, with high end cabinetry.

The kitchen was recently installed with highend appliances
and worktops.

At the rear of the apartment is the double bedroom with
bespoke built in wardrobes and doors out to the rear
courtyard.

The shower room has been beautifully appointed with
statement green tiles and cooper fittings.

There is a small rear courtyard with space to sit out and a
covered area with a freestanding copper bath.

Tenure: Leasehold

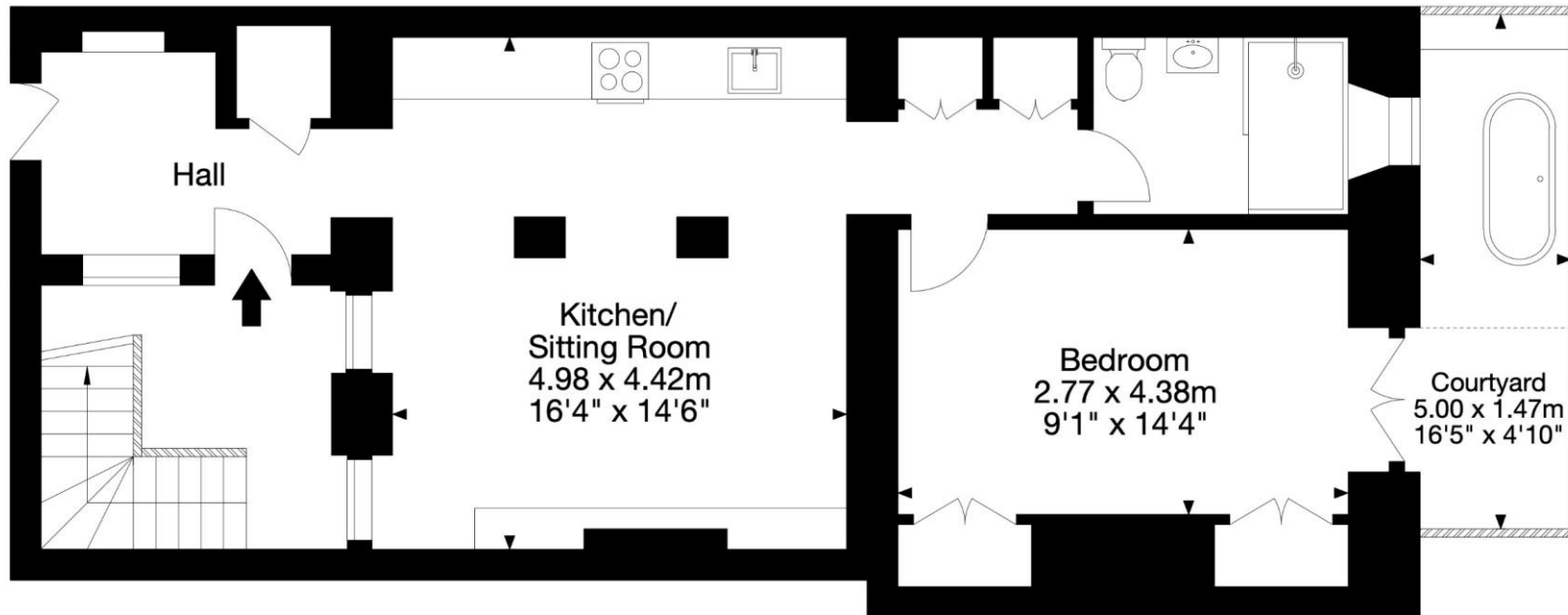
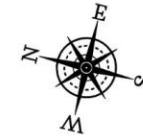
Council Tax: C

BANES Council





Flat 1, Alfred Street, Bath BA1 2QU
 Gross Internal Area (Approx.)
 56 sq m / 602 sq ft



Energy Efficiency Rating		Current	Potential
Very energy efficient - lower running costs			
(92-100)	A		
(81-91)	B		
(69-80)	C		
(55-68)	D		
(39-54)	E	70	78
(21-38)	F		
(1-20)	G		
Not energy efficient - higher running costs			
England, Scotland & Wales		EU Directive 2002/91/EC	

Capture Property Marketing 2024. Drawn to RICS guidelines. Not drawn to scale. Plan is for illustration purposes only. All features, door openings, and window locations are approximate. All measurements and areas are approximate and should not be relied on as a statement of fact.

Bath | 01225 829 000 | bath@winkworth.co.uk

winkworth.co.uk

Winkworth wishes to inform prospective buyers and tenants that these particulars are a guide and act as information only. All our details are given in good faith and believed to be correct at the time of printing but they don't form part of an offer or contract. No Winkworth employee has authority to make or give any representation or warranty in relation to this property. All fixtures and fittings, whether fitted or not are deemed removable by the vendor unless stated otherwise and room sizes are measured between internal wall surfaces, including furnishings.

