



ALEXANDER STREET, LONDON, W2  
**£565 PER WEEK (£2,448.33 PCM) FURNISHED**

**A LOVELY SPACIOUS ONE BEDROOM GARDEN FLAT  
IN THIS ATTRACTIVE PERIOD CONVERSION.**

Notting Hill Lettings | 0207 727 3227 | [nottinghill@winkworth.co.uk](mailto:nottinghill@winkworth.co.uk)

**Winkworth**

for every step...

[winkworth.co.uk](http://winkworth.co.uk)



## DESCRIPTION:

A lovely and very spacious one-bedroom Garden flat with its own entrance of this attractive period conversion on this peaceful and pretty tree lined street. The property comprises one bedroom, one bathroom and a large open plan living area that leads out on to a wonderful private west facing garden.

## Utilities:

Electricity – Mains

Water – Mains

Sewerage – Mains

Heating – Gas

Broadband <https://checker.ofcom.org.uk/en-gb/broadband-coverage>

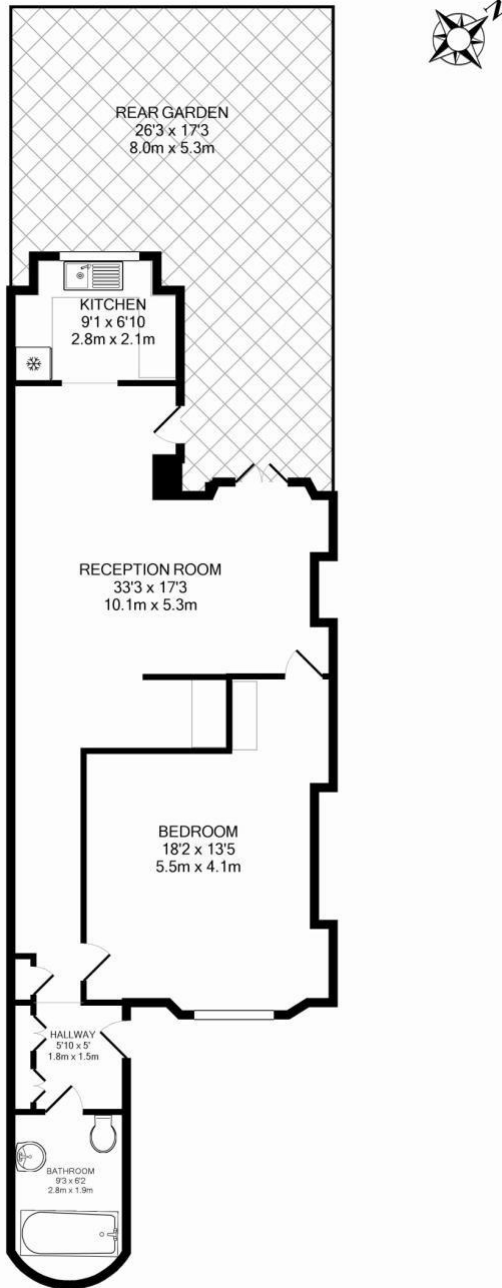
Mobile Coverage <https://checker.ofcom.org.uk/en-gb/mobile-coverage>





## LOCATION

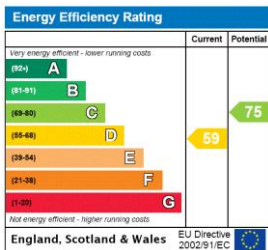
Alexander Street is an attractive residential street, well located in this peaceful and sought after Notting Hill spot, to the south of Westbourne Park Road, a short walk from the many shopping and dining amenities of Westbourne Grove and the transport connections of Queensway.



22A ALEXANDER STREET LONDON W2 5NT  
TOTAL APPROX. FLOOR AREA 62.1 SQ.M. (669 SQ.FT.)

Every attempt is made to ensure the accuracy of this plan. Measurements of doors, windows and rooms are approximate and the company accepts no responsibility for error, omission or mis-statement.  
This plan is intended for illustrative purposes only (is a support limited) Park House | 265-268 Latimer Road | London | W10 8QY | (020) 8669 1131 | info@amessteveners.co.uk | www.groupss.net  
Made with Metropen (c)2010

This floorplan is for illustration purposes only and is not to scale. The position and size of doors, windows, appliances and other features are approximate.



**Deposit: £2,725**

**Holding Deposit: £545**

**Council Tax Band: H (Westminster)**

where no figures are shown, we have been unable to ascertain the information. All figures that are shown were correct at the time of printing.

Notting Hill Lettings | 0207 727 3227 | nottinghill@winkworth.co.uk

**Winkworth**

for every step...

winkworth.co.uk

winkworth wishes to inform prospective buyers and tenants that these particulars are a guide and act as information only. All our details are given in good faith and believed to be correct at the time of printing but they don't form part of an offer or contract. No Winkworth employee has authority to make or give any representation or warranty in relation to this property. All fixtures and fittings, whether fitted or not are deemed removable by the vendor unless stated otherwise and room sizes are measured between internal wall surfaces, including furnishings.