



SALMON STREET, KINGSBURY, LONDON, NW9  
**£1,500,000 FREEHOLD**

## EXQUISITE FOUR BEDROOM EXTENDED DETACHED HOME

Kingsbury | 020 8204 0000 | [kingsbury@winkworth.co.uk](mailto:kingsbury@winkworth.co.uk)

**Winkworth**

for every step...

[winkworth.co.uk](http://winkworth.co.uk)



Winkworth  
for every step...

Discover your forever home in the popular amongst families community of Salmon Street, perfectly nestled between Kingsbury and Wembley. Families with children will appreciate the proximity to renowned schools such as St. Robert Southwell and Lycée International de Londres, as well as the picturesque Fryent Country Park just a stone's throw away. Upon entering, you are greeted by a grand foyer which seamlessly flows into two bright and spacious reception rooms on either side. This detached home is adorned with beautifully crafted features throughout. The stylish kitchen is generously sized and well-equipped, integrating with a large, sun flooded conservatory, which opens out to a grand meticulously maintained garden just perfect for family gatherings, The home has been extended into the loft, providing ample space with four well-proportioned bedrooms each offering a private sanctuary, an office, and two bathrooms on the upper levels. Additionally, the property offers the convenience of off-street parking on the driveway. An internal viewing is a must to truly appreciate all this beautiful home has to offer.



Winkworth  
for every step...



Winkworth  
for every step...

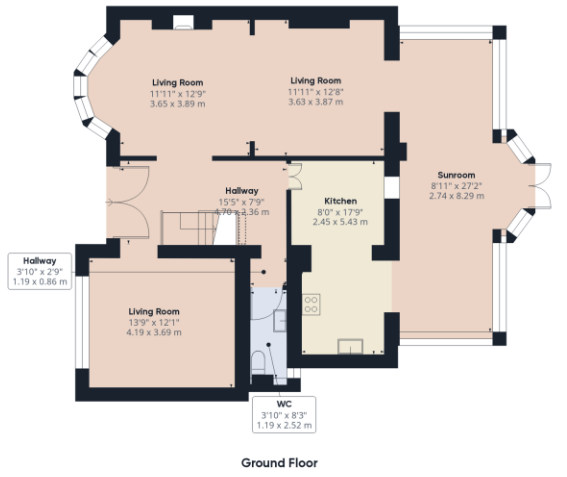
**Winkworth**

for every step...



**Winkworth**

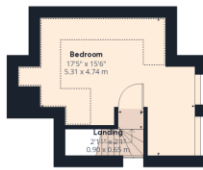
for every step...



Ground Floor



Floor 1



Floor 2

**Approximate total area<sup>(1)</sup>**  
 2039.22 ft<sup>2</sup>  
 189.45 m<sup>2</sup>

**Reduced headroom**  
 81.38 ft<sup>2</sup>  
 7.56 m<sup>2</sup>

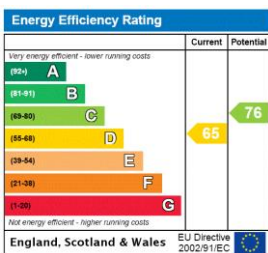
(1) Excluding balconies and terraces

Reduced headroom (below 1.5m/4.92ft)

While every attempt has been made to ensure accuracy, all measurements are approximate, not to scale. This floor plan is for illustrative purposes only.

GIRAFFE360

This floorplan is for illustration purposes only and is not to scale. The position and size of doors, windows, appliances and other features are approximate.



**Tenure:** Freehold

**Council Tax Band:** F - Brent

Where no figures are shown, we have been unable to ascertain the information. All figures that are shown were correct at the time of printing.

Kingsbury | 020 8204 0000 | kingsbury@winkworth.co.uk



for every step...

winkworth.co.uk

Winkworth wishes to inform prospective buyers and tenants that these particulars are a guide and act as information only. All our details are given in good faith and believed to be correct at the time of printing but they don't form part of an offer or contract. No Winkworth employee has authority to make or give any representation or warranty in relation to this property. All fixtures and fittings, whether fitted or not are deemed removable by the vendor unless stated otherwise and room sizes are measured between internal wall surfaces, including furnishings.