



PROSPECT STREET, READING, BERKSHIRE, RG4 8JB
£1,350 PER MONTH UNFURNISHED

**BRAND NEW ONE BEDROOM APARTMENT IN
CAVERSHAM. AVAILABLE NOW.**

Reading | 0118 4022 300 | reading@winkworth.co.uk

Winkworth

for every step...

winkworth.co.uk



DESCRIPTION:

Brand new one bedroom first floor apartment conveniently located in the heart of Caversham close to an excellent selection of restaurants, bars, cafes, shops and an easy walk to the River Thames and Reading Station. The apartment has been finished to a high standard throughout comprising entrance hall, open plan living space featuring a high specification fitted kitchen with a range of integrated appliances including a dishwasher, bedroom and a modern shower room.

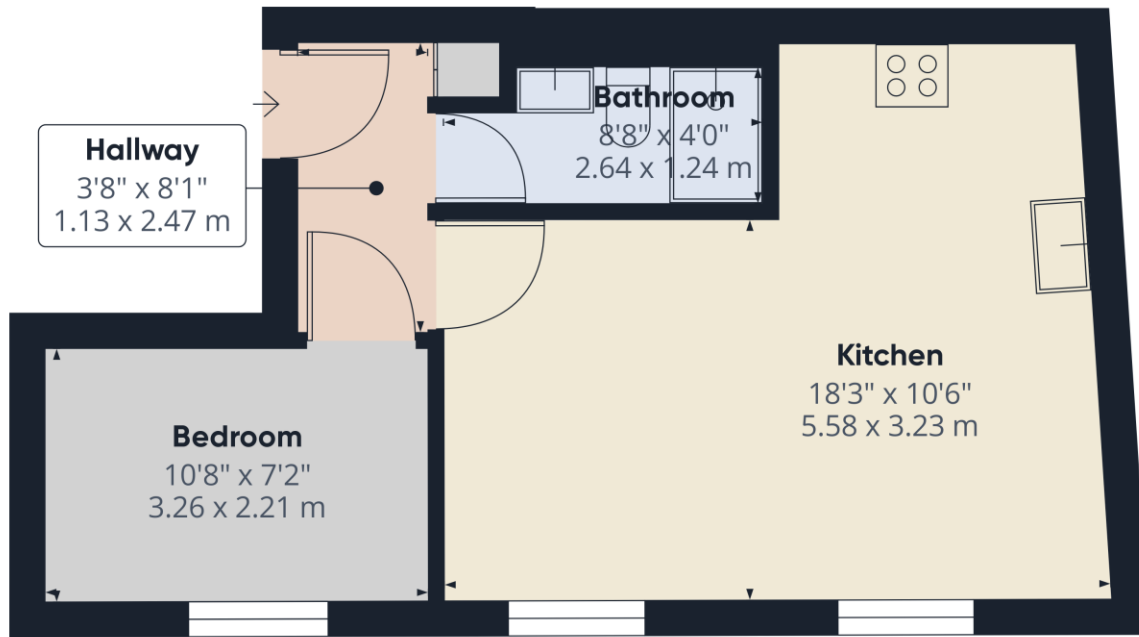
The property boasts a range of contemporary design features including; designer bathroom fittings, Cormar carpets to bedrooms, feature lighting throughout, bespoke cabinetry, ornate woodwork, skirting and architrave, bespoke joinery doors and brass ironmongery with hidden hinges, underfloor heating and a NIBE unit with Mechanical Heat Ventilation System.

Available now. Unfurnished.

AT A GLANCE

- Brand new one bedroom apartment
- First floor
- Central Caversham location
- Council tax band TBC
- Available now
- Unfurnished





Approximate total area⁽¹⁾
 376.41 ft²
 34.97 m²

(1) Excluding balconies and terraces

While every attempt has been made to ensure accuracy, all measurements are approximate, not to scale. This floor plan is for illustrative purposes only.
 Calculations are based on RICS IPMS 3C standard.

GIRAFFE360

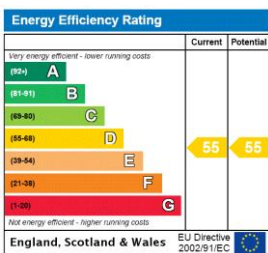
This floorplan is for illustration purposes only and is not to scale. The position and size of doors, windows, appliances and other features are approximate.

Deposit: £1,557.69

Holding Deposit: £311.53

Council Tax Band:

Where no figures are shown, we have been unable to ascertain the information. All figures that are shown were correct at the time of printing.



Reading | 0118 4022 300 | reading@winkworth.co.uk



for every step...

winkworth.co.uk

Winkworth wishes to inform prospective buyers and tenants that these particulars are a guide and act as information only. All our details are given in good faith and believed to be correct at the time of printing but they don't form part of an offer or contract. No Winkworth employee has authority to make or give any representation or warranty in relation to this property. All fixtures and fittings, whether fitted or not are deemed removable by the vendor unless stated otherwise and room sizes are measured between internal wall surfaces, including furnishings.