



WESLEY SQUARE, W11
£4,500 PER MONTH

STUNNING THREE BEDROOM HOUSE IN EXCLUSIVE GARDEN SQUARE DEVELOPMENT

North Kensington | 020 7792 5000 | northkensington@winkworth.co.uk

Tenant Fees Apply: Details of fees for tenant referencing, tenancy agreement admin fees and renewal fees are available on the Winkworth website and the link can be found with the displayed rent for the property. Tenants should ensure they are fully conversant with these upfront fees and other costs that are involved at the outset of the tenancy before making an offer to rent and your local Winkworth office will provide written details upon request.

winkworth.co.uk

Winkworth

for every step...

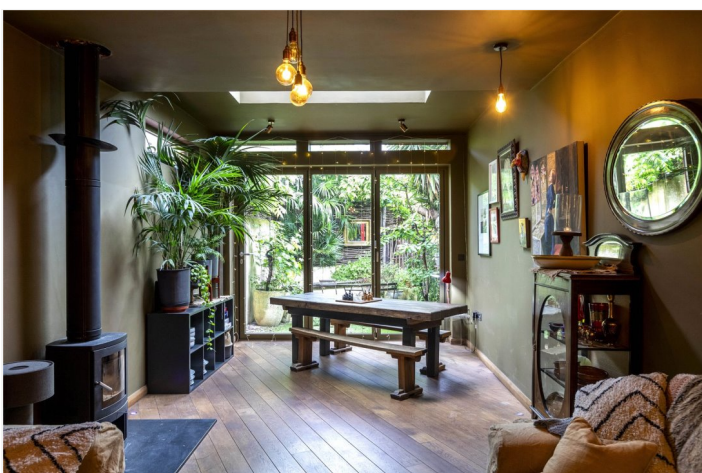


Built in 1979, Wesley Square is a small development of 50 houses, maisonettes and flats, the owners of which jointly own the freehold. The involvement of everybody who wishes, in the management of the Square gives it a strong sense of community, and leads to friendly and neighbourly relationships. Entered through a private front garden off the beautiful car-free garden square.

This gorgeous family home has been tastefully decorated and modernised to a very high standard throughout. The property comprises three spacious bedrooms, a large double aspect open plan kitchen reception, modern bathroom, separate guest WC and private garden. Additional benefits include an allocated parking space.

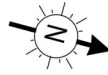
AT A GLANCE


- EXCLUSIVE GARDEN SQUARE DEVELOPMENT
- CLOSE TO TRANSPORT LINKS
- CLOSE TO PORTOBELLO ROAD
- GORGEOUS LANDSCAPED COMMUNAL GARDEN
- MODERN
- WOOD BURNING STOVE
- ALLOCATED PARKING

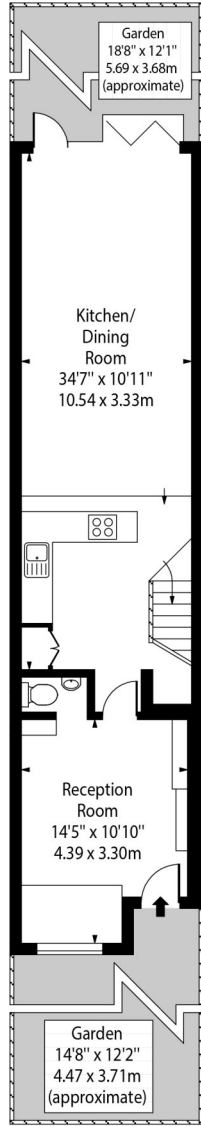




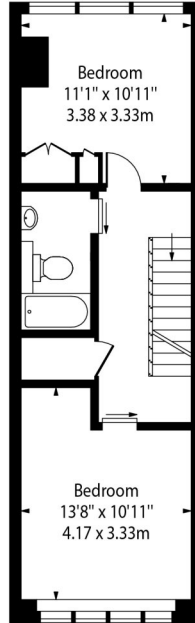
Wesley Square,
London, W11



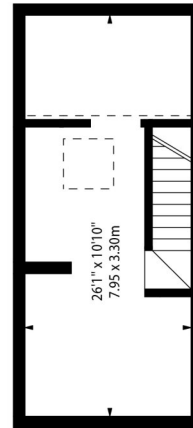
 - Ceiling Height



Ground Floor



First Floor



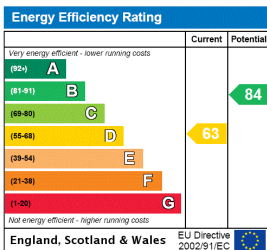
Second Floor

Approx Gross Internal Area 1182 Sq Ft - 109.81 Sq M

Approx Floor Area Including Restricted Heights 1252 Sq Ft - 116.31 Sq M

This floor plan should be used as a general outline for guidance only and does not constitute in whole or in part an offer or contract. Any intending purchaser or lessee should satisfy themselves by inspection, searches, enquiries and full survey as to the correctness of each statement. Any areas, measurements or distances quoted are approximate and should not be used to value a property or be the basis of any sale or let.

This floorplan is for illustration purposes only and is not to scale. The position and size of doors, windows, appliances and other features are approximate.



Deposit: £0.00

Holding Deposit:

Council Tax Band:

Where no figures are shown, we have been unable to ascertain the information. All figures that are shown were correct at the time of printing.

North Kensington | 020 7792 5000 | northkensington@winkworth.co.uk



for every step...

winkworth.co.uk

Winkworth wishes to inform prospective buyers and tenants that these particulars are a guide and act as information only. All our details are given in good faith and believed to be correct at the time of printing but they don't form part of an offer or contract. No Winkworth employee has authority to make or give any representation or warranty in relation to this property. All fixtures and fittings, whether fitted or not are deemed removable by the vendor unless stated otherwise and room sizes are measured between internal wall surfaces, including furnishings.