



**TIZZARD GROVE, BLACKHEATH, LONDON, SE3 9EQ**  
**£650,000 LEASEHOLD**

**A HUGE, LARGER THAN USUAL, AND IMPRESSIVE THREE DOUBLE BEDROOM, TWO BATHROOM, MODERN APARTMENT SPANNING IN EXCESS OF 1200 SQ.FT IN AN ENVIABLE POSITION WITHIN THE HIGHLY SOUGHT AFTER BLACKHEATH QUARTER OF KIDBROOKE VILLAGE WITH CONCIERGE, GYM AND SWIMMING POOL.**

Blackheath | 0208 8520999 | blackheath@winkworth.co.uk

**Winkworth**

for every step...

*winkworth.co.uk*



## DESCRIPTION:

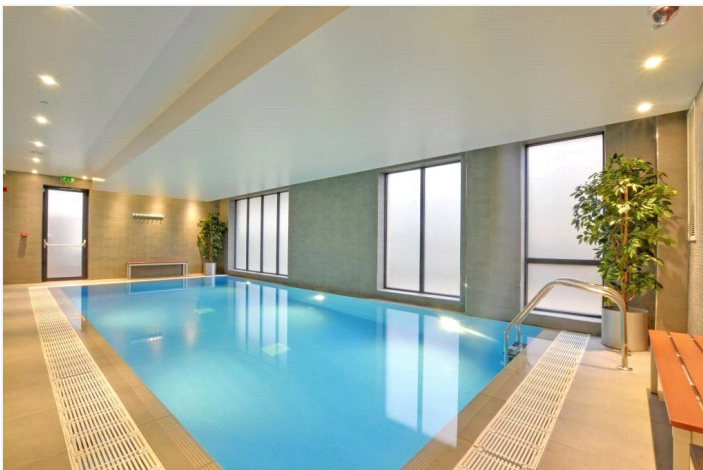
Located on the third floor (with lift service), the accommodation comprises; a large entrance hall with utility and storage cupboards, a huge 21'7 x 13'6 open plan lounge/diner with an attractive modern kitchen with Neff appliances. There is a large master bedroom with built-in wardrobes and a luxurious modern ensuite bathroom, two further double bedrooms and an attractive modern shower room. There is direct access from living room onto a private terrace overlooking the beautiful communal gardens. The property also has the benefit of access to an on-site concierge service, gym, swimming pool, cinema room, business centre and dry-cleaning service and an underground car parking space (right to park) with EV charging points.

This is one of the largest of the three bedroom apartments within Kidbrooke Village and your immediate viewing is essential. Video tour can be seen at [winkworth.co.uk](http://winkworth.co.uk)

Wallace Court is located in the prestigious Blackheath Quarter of the modern Kidbrooke Village – an award winning Berkeley Homes development. This is a completely new and vibrant London community offering an outstanding choice of quality, sustainable new homes. As well as new homes, it offers a new park, sports facilities, and a variety of local amenities stone's throw away including Sainsbury's, Starbucks, Gym, Pharmacy, Doctors, Pub, Dentist, Beauty Salon and Nursery.

Transport links to central London are very close via the newly rebuilt Kidbrooke station with regular trains to London Bridge (16 minutes), Waterloo East (22 minutes), Charing Cross (26 minutes), Cannon Street (25 minutes) and Victoria (31 minutes). Blackheath Village with its open green spaces offers an array of boutiques, daily conveniences, bars and restaurants and is only moments away.

The Ofsted outstanding Wingfield Primary Schools is on the door step as well as Brooklands Primary within ¼ mile. Close by as are several highly sought-after Independent Schools including; Blackheath Preparatory School, The Pointer School, Heath House Preparatory School, Blackheath High Junior School, Blackheath High Seniors School, Colfes (1.1 miles) and Eltham College (2.2miles).

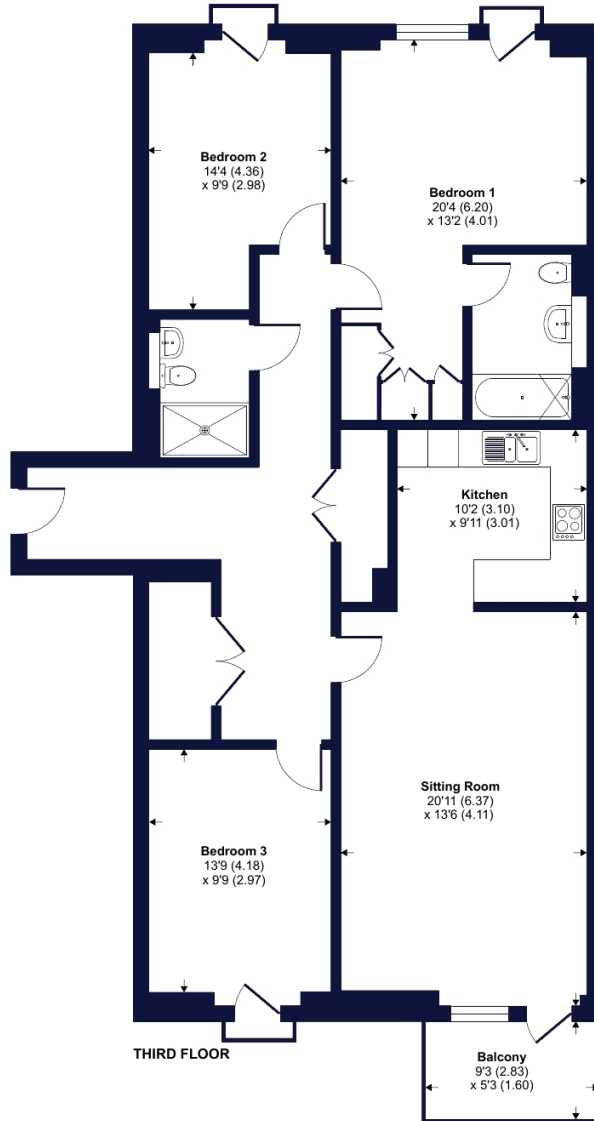




# Tizzard Grove, London, SE3

Approximate Area = 1240 sq ft / 115.1 sq m

For identification only - Not to scale



Floor plan produced in accordance with RICS Property Measurement 2nd Edition, Incorporating International Property Measurement Standards (IPMS2 Residential). © nrichcom 2024. Produced for Winkworth. REF: 1255372

Winkworth

This floorplan is for illustration purposes only and is not to scale. The position and size of doors, windows, appliances and other features are approximate. Any lease and service charge details have been provided by the vendor. Any interest party should have these checked by a solicitor as part of the purchase process.

Blackheath | 0208 8520999 | blackheath@winkworth.co.uk

Winkworth

for every step...

winkworth.co.uk

Winkworth wishes to inform prospective buyers and tenants that these particulars are a guide and act as information only. All our details are given in good faith and believed to be correct at the time of printing but they don't form part of an offer or contract. No Winkworth employee has authority to make or give any representation or warranty in relation to this property. All fixtures and fittings, whether fitted or not are deemed removable by the vendor unless stated otherwise and room sizes are measured between internal wall surfaces, including furnishings.