



CAMBERWELL GROVE, CAMBERWELL, LONDON, SE5
£475,000 LEASEHOLD

**A BEAUTIFULLY PRESENTED ONE BEDROOM,
FIRST FLOOR FLAT SITUATED WITHIN AN
END OF TERRACE GEORGIAN BUILDING.**

Dulwich | 020 8299 2722 | dulwich@winkworth.co.uk

Tenure Leasehold approx. 151 yrs remaining | Council Tax Band B – London Borough of Southwark | Service Charge £1500 pa | Ground Rent None

Winkworth

winkworth.co.uk

See things differently



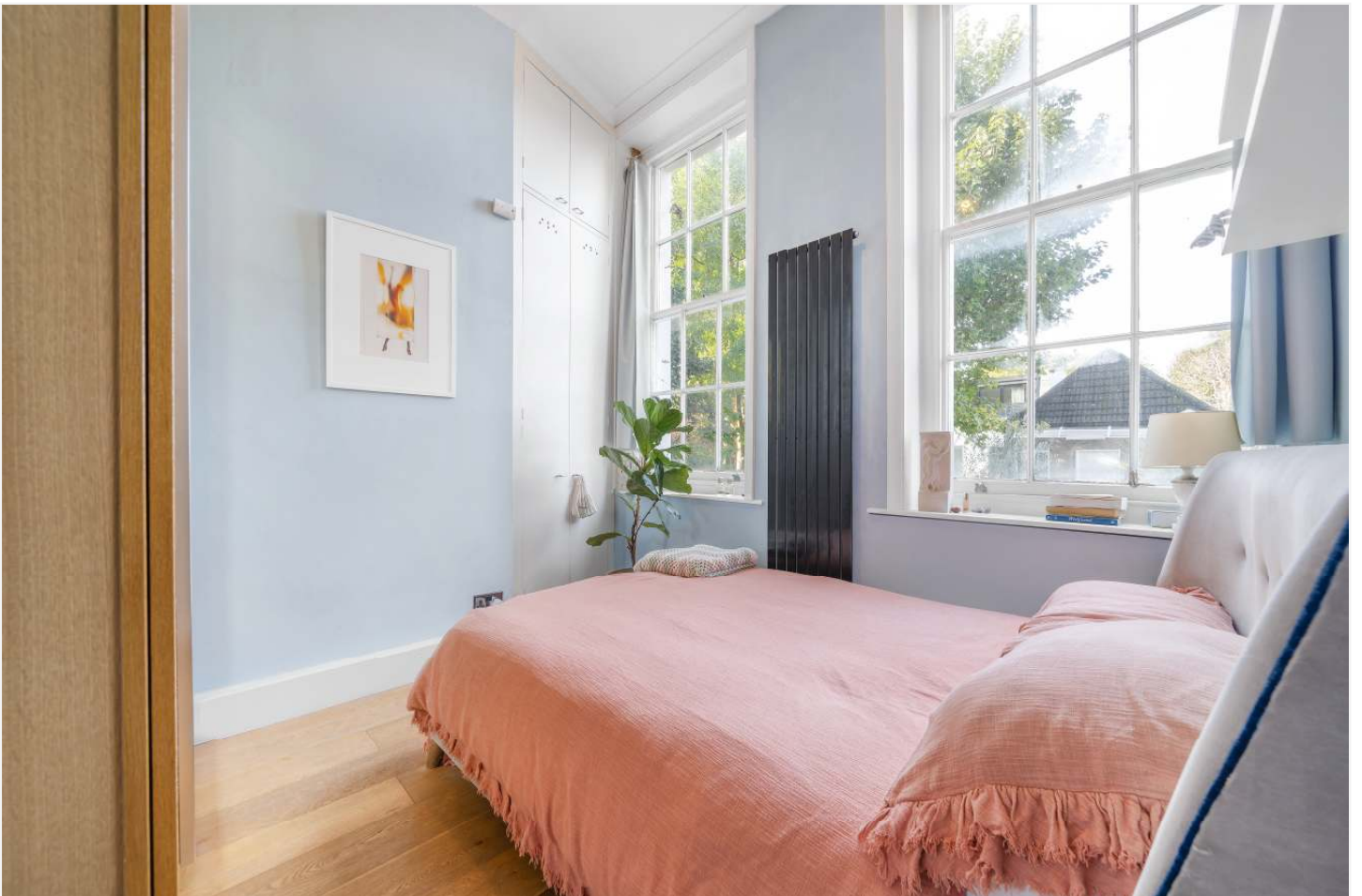
DESCRIPTION:

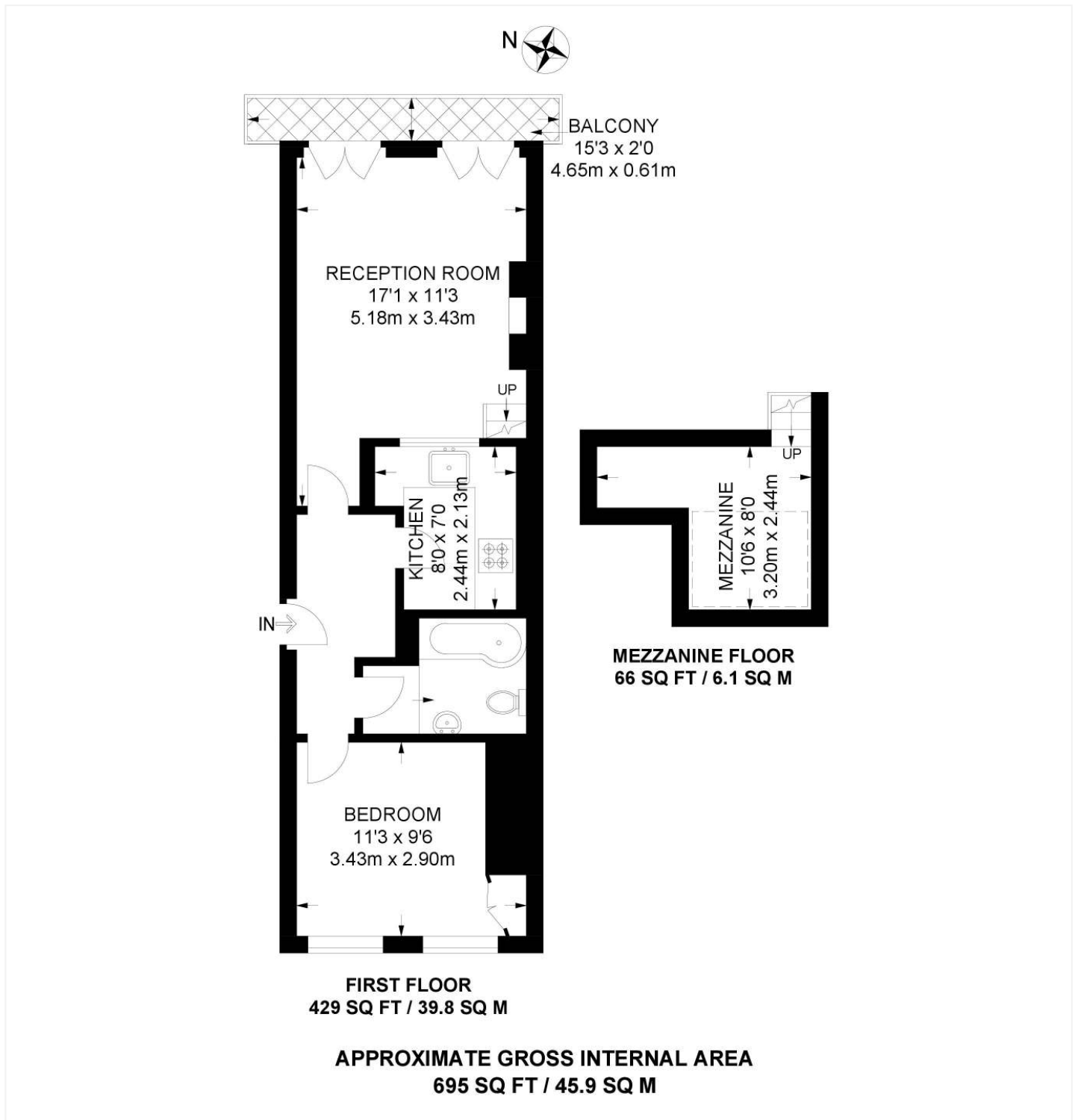
A beautifully presented one bedroom, first floor flat situated on one of South East London's most sought after streets. Set within a Georgian end of terrace building, this gorgeous flat offers a good size reception room with solid wood floors, high ceilings and wonderful floor to ceiling French doors, which open onto a balcony overlooking Camberwell Grove. Further comprises a separate bathroom, fully fitted kitchen and double bedroom with large sash windows, the property further boasts a mezzanine level, ideal for having guests over. Camberwell Grove is located close to both East Dulwich and Denmark Hill stations with direct connections to the overground line. The property is offered to the market chain free and is available to view immediately.

AT A GLANCE

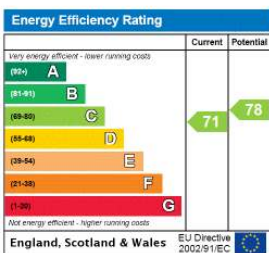
- One Double Bedroom
- First Floor Flat
- High Ceiled Reception
- Modern Kitchen & Bathroom
- Mezzanine Storage Area
- Private Balcony
- Leasehold
- Chain Free







This floorplan is for illustration purposes only and is not to scale. The position and size of doors, windows, appliances and other features are approximate.



Dulwich | 020 8299 2722 | dulwich@winkworth.co.uk



winkworth.co.uk

See things differently

Winkworth wishes to inform prospective buyers and tenants that these particulars are a guide and act as information only. All our details are given in good faith and believed to be correct at the time of printing but they don't form part of an offer or contract. No Winkworth employee has authority to make or give any representation or warranty in relation to this property. All fixtures and fittings, whether fitted or not are deemed removable by the vendor unless stated otherwise and room sizes are measured between internal wall surfaces, including furnishings.