



Rosary Gardens, South Kensington, London, SW7

£692.31 per week* / £3,000 per month – Furnished

An extremely light and bright one bedroom flat benefitting from excellent proportions, on the second floor (walk-up) of this West-facing red brick period conversion.

1 Bedroom | 1 Reception Room | 1 Bathroom | Second Floor Flat | Period | 569 Approx sq ft | EPC: E

APPLICANT FEES MAY BE APPLICABLE
HOLDING DEPOSIT OF 1 WEEK'S RENT
SECURITY DEPOSIT OF 5 WEEKS' RENT

Winkworth



DESCRIPTION

This charming flat extends to 569sq/ft (52sq/m) of accommodation and is presented in good order. Of particular note is the West-facing reception room with high ceilings and two large sash windows producing a wealth of natural light. In addition, the well-proportioned bedroom overlooks the private rear gardens of Hereford Square and has an attractive, leafy outlook. The property is available from mid-June on a furnished basis.




ACCOMMODATION

1 Bedroom, 1 Reception Room,
1 Bathroom, Second Floor Flat,
Furnished, 569 Approx sq ft

COUNCIL TAX BAND

Band F

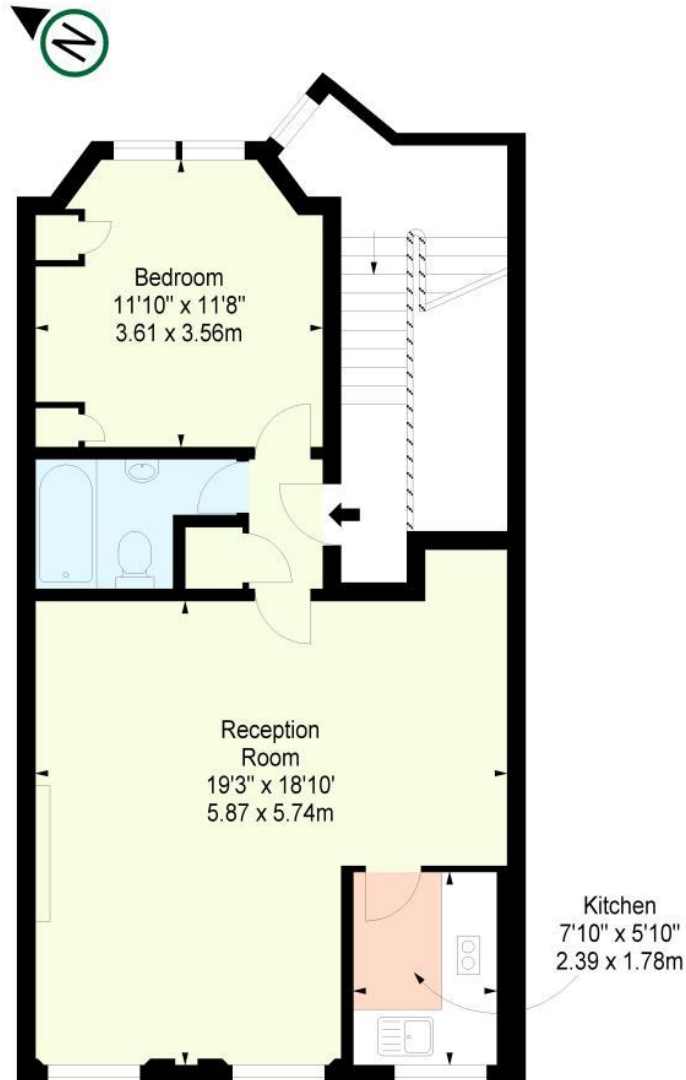
Energy Efficiency Rating		
	Current	Potential
Very energy efficient - lower running costs		
(92+) A		
(81-91) B		83
(69-80) C		
(55-68) D		
(39-54) E	48	
(21-38) F		
(1-20) G		
Not energy efficient - higher running costs		
England, Scotland & Wales		EU Directive 2002/91/EC 

ROSARY GARDENS SW7

Approx. Gross Internal Area *
569 Ft² - 52.86 M²

Illustration For Identification Purposes Only. Not to Scale

* As Defined by RICS - Code of Measuring Practice



SECOND FLOOR



www.bkrfloorplans.co.uk

T: 0845 257 2023

© BKR 2012

This floorplan is for illustration purposes only and is not to scale. The position and size of doors, windows, appliances and other features are approximate.

**Please note, the rent cannot be paid on a weekly basis*

Winkworth

South Kensington Lettings | 020 7370 6767 | lettings.southken@winkworth.co.uk

winkworth.co.uk

for every step...

Winkworth wishes to inform prospective buyers and tenants that these particulars are a guide and act as information only. All our details are given in good faith and believed to be correct at the time of printing but they don't form part of an offer or contract. No Winkworth employee has authority to make or give any representation or warranty in relation to this property. All fixtures and fittings, whether fitted or not are deemed removable by the vendor unless stated otherwise and room sizes are measured between internal wall surfaces, including furnishings.