



**HUNT CLOSE, W11**  
**£2,383.33 PER MONTH FURNISHED**

North Kensington | 020 7792 5000 | northkensington@winkworth.co.uk

Tenant Fees Apply: Details of fees for tenant referencing, tenancy agreement admin fees and renewal fees are available on the Winkworth website and the link can be found with the displayed rent for the property. Tenants should ensure they are fully conversant with these upfront fees and other costs that are involved at the outset of the tenancy before making an offer to rent and your local Winkworth office will provide written details upon request.

[winkworth.co.uk](http://winkworth.co.uk)



for every step...



### DESCRIPTION:

The open plan kitchen and living space is large and benefits an abundance of natural light. Double doors open onto the private south facing balcony which overlooks recreational greenspace and a small play area for children. There are two double bedrooms, modern bathroom and en-suite shower room.

### AT A GLANCE

- TWO DOUBLE BEDROOMS
- BALCONY
- TWO BATHROOMS
- CLOSE TO TRANSPORT LINKS
- FURNISHED
- MODERN
- BRIGHT

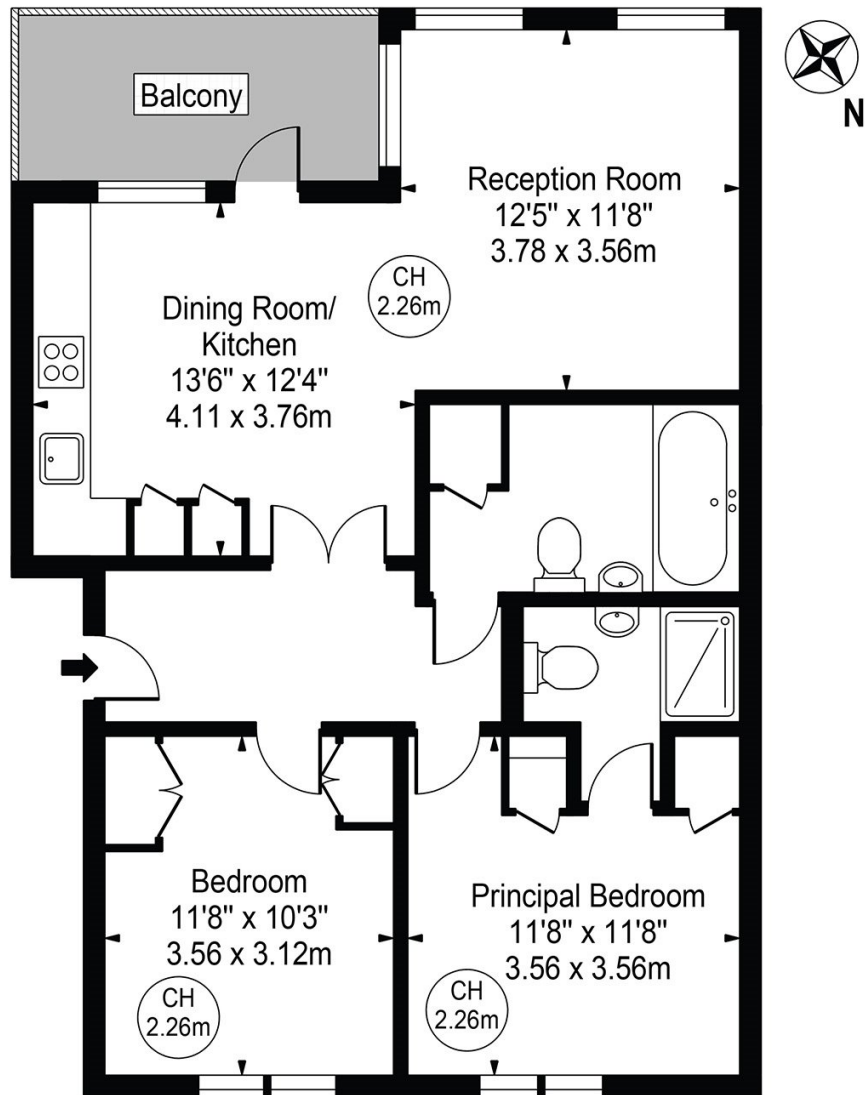






# Hunt Close

Approx. Gross Internal Area 767 Sq Ft - 71.26 Sq M



## Second Floor

For Illustration Purposes Only - Not To Scale

This floor plan should be used as a general outline for guidance only and does not constitute in whole or in part an offer or contract. Any intending purchaser or lessee should satisfy themselves by inspection, searches, enquiries and full survey as to the correctness of each statement. Any areas, measurements or distances quoted are approximate and should not be used to value a property or be the basis of any sale or let.  
Copyright Morriarti Photography & Design LTD

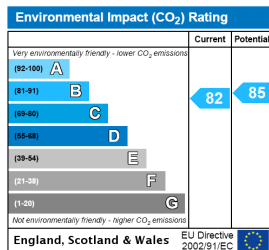
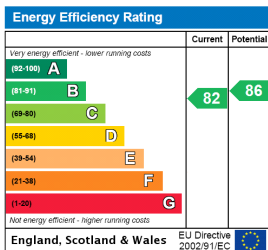
This floorplan is for illustration purposes only and is not to scale. The position and size of doors, windows, appliances and other features are approximate.

Deposit: £0.00

Holding Deposit:

Council Tax Band:

Where no figures are shown, we have been unable to ascertain the information. All figures that are shown were correct at the time of printing.



North Kensington | 020 7792 5000 | northkensington@winkworth.co.uk

**Winkworth**

for every step...

winkworth.co.uk

Winkworth wishes to inform prospective buyers and tenants that these particulars are a guide and act as information only. All our details are given in good faith and believed to be correct at the time of printing but they don't form part of an offer or contract. No Winkworth employee has authority to make or give any representation or warranty in relation to this property. All fixtures and fittings, whether fitted or not are deemed removable by the vendor unless stated otherwise and room sizes are measured between internal wall surfaces, including furnishings.