



KENNET HOUSE, READING, BERKSHIRE, RG1 3BJ
£995 PER MONTH FURNISHED

MODERN TOWN CENTRE STUDIO
APARTMENT IN READING TOWN CENTRE.
AVAILABLE 15TH MAY.

Reading | 0118 4022 300 | reading@winkworth.co.uk

Winkworth

for every step...

winkworth.co.uk



DESCRIPTION:

Modern second floor studio apartment within the popular Kennet House development with courtyard views. Accommodation comprises entrance hall with a storage/laundry cupboard housing the washer dryer, a generous open plan living space with a contemporary high specification kitchen with a range of Bosch appliances and a modern three piece bathroom. The property further benefits from a video entry system, lift access and a concierge service on the ground floor. Available 15th May 2025. Furnished.

Ideally located on the banks of the Kennet and Avon Canal and within a short walk of Reading train station, with its direct link to London Paddington in just 21 minutes and on the tube network via the Elizabeth Line, linking Reading to Canary Wharf and the City of London.

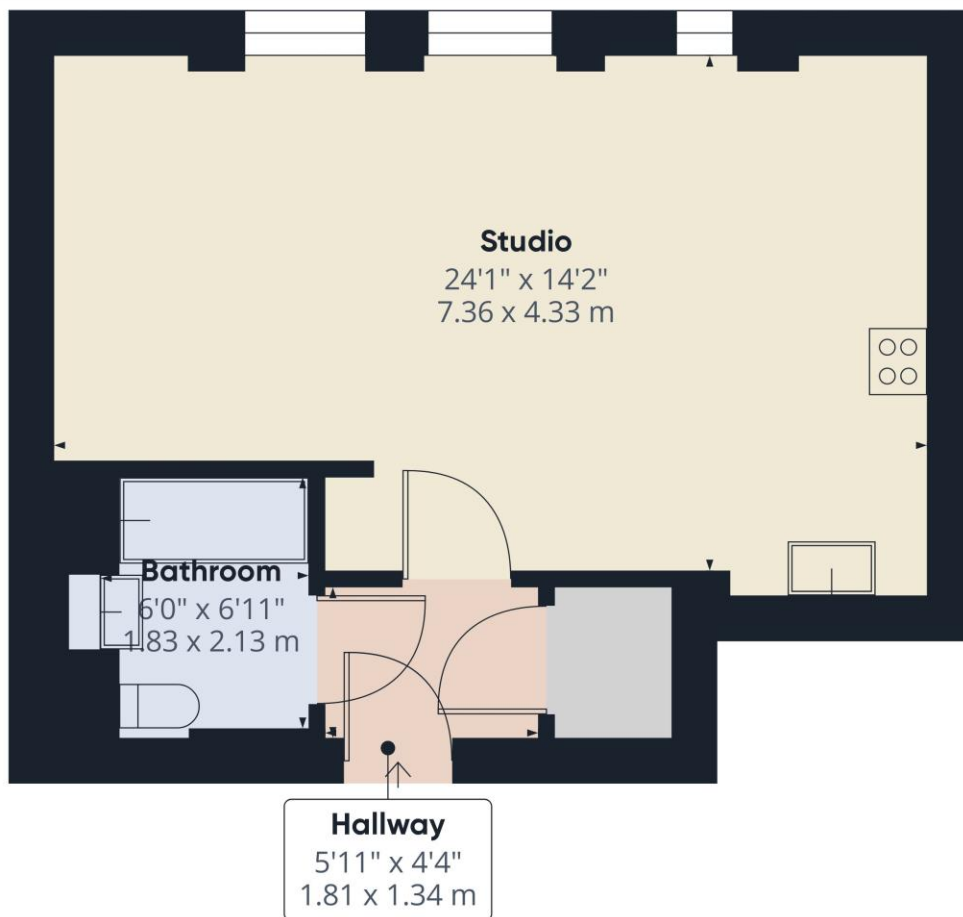
*Awaiting EPC

AT A GLANCE

- Second Floor Studio Apartment
- 24ft. Open Plan Living Space
- High Specification Kitchen
- Council tax band B
- Convenient Town Centre Location
- Lift Access and Concierge
- Available 15th May
- Furnished







Approximate total area⁽¹⁾

408.28 ft²
37.93 m²

(1) Excluding balconies and terraces

While every attempt has been made to ensure accuracy, all measurements are approximate, not to scale. This floor plan is for illustrative purposes only.

Calculations are based on RICS IPMS 3C standard.

GIRAFFE360

This floorplan is for illustration purposes only and is not to scale. The position and size of doors, windows, appliances and other features are approximate.

Deposit: £1,148.08

Holding Deposit: £229.61

Council Tax Band: B

Where no figures are shown, we have been unable to ascertain the information. All figures that are shown were correct at the time of printing.

Reading | 0118 4022 300 | reading@winkworth.co.uk

Winkworth

for every step...

winkworth.co.uk

Winkworth wishes to inform prospective buyers and tenants that these particulars are a guide and act as information only. All our details are given in good faith and believed to be correct at the time of printing but they don't form part of an offer or contract. No Winkworth employee has authority to make or give any representation or warranty in relation to this property. All fixtures and fittings, whether fitted or not are deemed removable by the vendor unless stated otherwise and room sizes are measured between internal wall surfaces, including furnishings.