



KELLY COURT, HERTFORDSHIRE, WD6  
**£360,000 FREEHOLD**

## A CHAIN FREE TWO DOUBLE BEDROOM TERRACE HOUSE WITH OFF STREET PARKING

Borehamwood | 020 8953 8899 | borehamwood@winkworth.co.uk



### DESCRIPTION:

Located on the ever popular Studio Way development, which has become increasingly popular following the completion of the multi millions Sky Studios nearby, is this two double bedroom terrace house.

Offered for sale chain free, the property benefits from a Westerly facing rear garden and off street parking and would be ideal for a first time buyer, downsizer or buy to let investor.

### AT A GLANCE

- Two Double Bedrooms
- Chain Free
- 631 Square Feet
- Off Street Parking
- Double Glazed
- Gas Central Heating
- Kitchen Breakfast Room





Approximate Gross Internal Area = 58.6 sq m / 631 sq ft

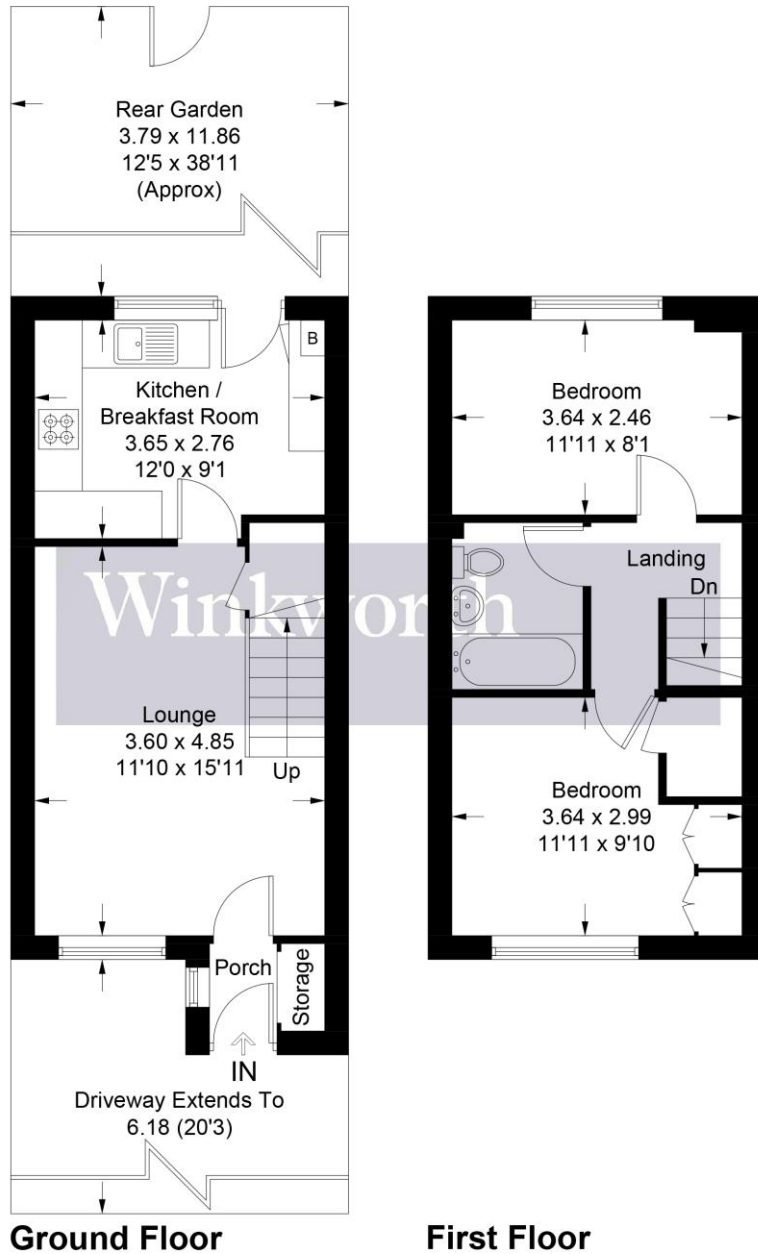
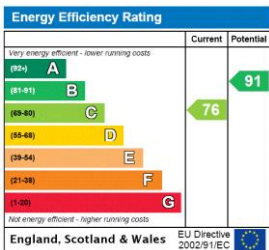


Illustration for identification purposes only, measurements are approximate, not to scale. Winkworth © 2024 (ID1123303)

This floorplan is for illustration purposes only and is not to scale. The position and size of doors, windows, appliances and other features are approximate.



**Tenure:** Freehold

**Term:** 0 year and 0 months

**Service Charge:** £0 per annum

**Ground Rent:** £ 0 Annually (subject to increase)

**Council Tax Band:**

Where no figures are shown, we have been unable to ascertain the information. All figures that are shown were correct at the time of printing.