



ESSEX ROAD, ISLINGTON, N1
£660 PER WEEK FURNISHED

SET ON THE UPPER FLOORS OF A NEWLY DEVELOPED PERIOD PROPERTY IS THIS SMART, SPACIOUS MODERN THREE BEDROOM FLAT

Islington | 020 7354 2480 | islington@winkworth.co.uk

Tenant Fees Apply: Details of fees for tenant referencing, tenancy agreement admin fees and renewal fees are available on the Winkworth website and the link can be found with the displayed rent for the property. Tenants should ensure they are fully conversant with these upfront fees and other costs that are involved at the outset of the tenancy before making an offer to rent and your local Winkworth office will provide written details upon request.

winkworth.co.uk

Winkworth

See things differently



DESCRIPTION:

Standing at 800 square feet and set on the upper floors of a newly developed period property is this smart, spacious modern three bedroom flat with balcony.

The property consists of a spacious reception room which leads out to a balcony, newly fitted state of the art kitchen, three double bedrooms and two modern bathrooms. The property further benefits from ample storage space and sash windows giving ample natural light.

The nearest stations are Highbury and Islington (Victoria and Northern City Lines) and Dalston Overground. Numerous buses run along Essex Road to Angel (Northern Line), the City and West End. Furnished.

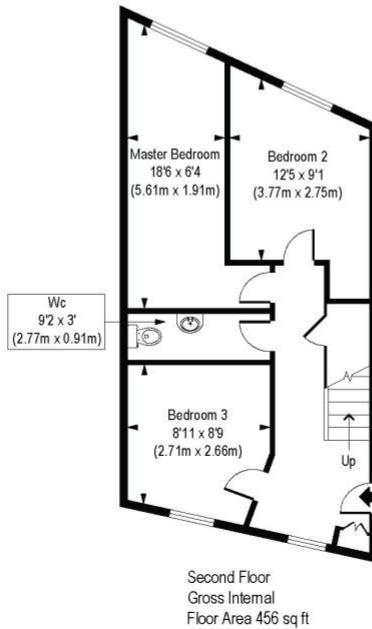
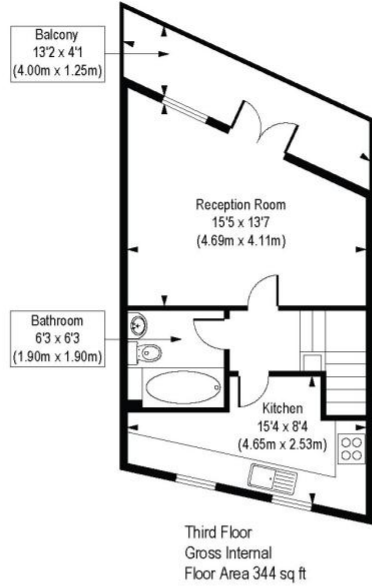
Winkworth



Winkworth

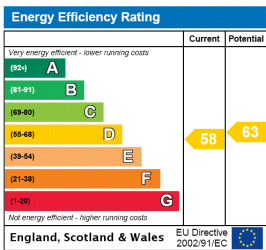
Essex Road, N1

Approx. Gross Internal Floor Area 800 sq. ft / 74.35 sq. m



COMPLIANT WITH RICS CODE OF MEASURING PRACTICE. Floorplan is for illustrative purposes only and is not to scale. Every attempt has been made to ensure the accuracy of the floorplan shown, however all measurements, fixtures, fittings and data shown are an approximate interpretation for illustrative purposes only. Liability for errors, omissions or mis-statement through negligence or otherwise is hereby excluded.

This floorplan is for illustration purposes only and is not to scale. The position and size of doors, windows, appliances and other features are approximate.



Islington | 020 7354 2480 | @winkworth.co.uk



winkworth.co.uk

See things differently

Winkworth wishes to inform prospective buyers and tenants that these particulars are a guide and act as information only. All our details are given in good faith and believed to be correct at the time of printing but they don't form part of an offer or contract. No Winkworth employee has authority to make or give any representation or warranty in relation to this property. All fixtures and fittings, whether fitted or not are deemed removable by the vendor unless stated otherwise and room sizes are measured between internal wall surfaces, including furnishings.