



Netherwood Road, Brook Green, W14

£535,000 Share of Freehold

An extremely well presented one bedroom flat on the raised ground floor of a mid-terrace Victorian house.

Reception Room | Kitchen | Bedroom | Bathroom | 557 Sq Ft / 52 Sq M | Council Tax Band D |
EPC Rating Band C

Winkworth

for every step...



LOCATION

The property is located towards the northern end of Netherwood Road, ideal for the numerous amenities on offer in not only Brook Green, but also Shepherds Bush. Westfield London is within easy reach, whilst the closest stations are Shepherds Bush (Central and Overground lines) and Hammersmith (Piccadilly, District, Hammersmith & City and Circle lines). The eagerly anticipated Olympia redevelopment is also just a short walk away.

DESCRIPTION

The flat offers well-proportioned accommodation, comprising reception room with bay window and fireplace, kitchen, bathroom and bedroom. The property further benefits from numerous period features and a good range of built in storage.





LOCAL AUTHORITY
Hammersmith & Fulham

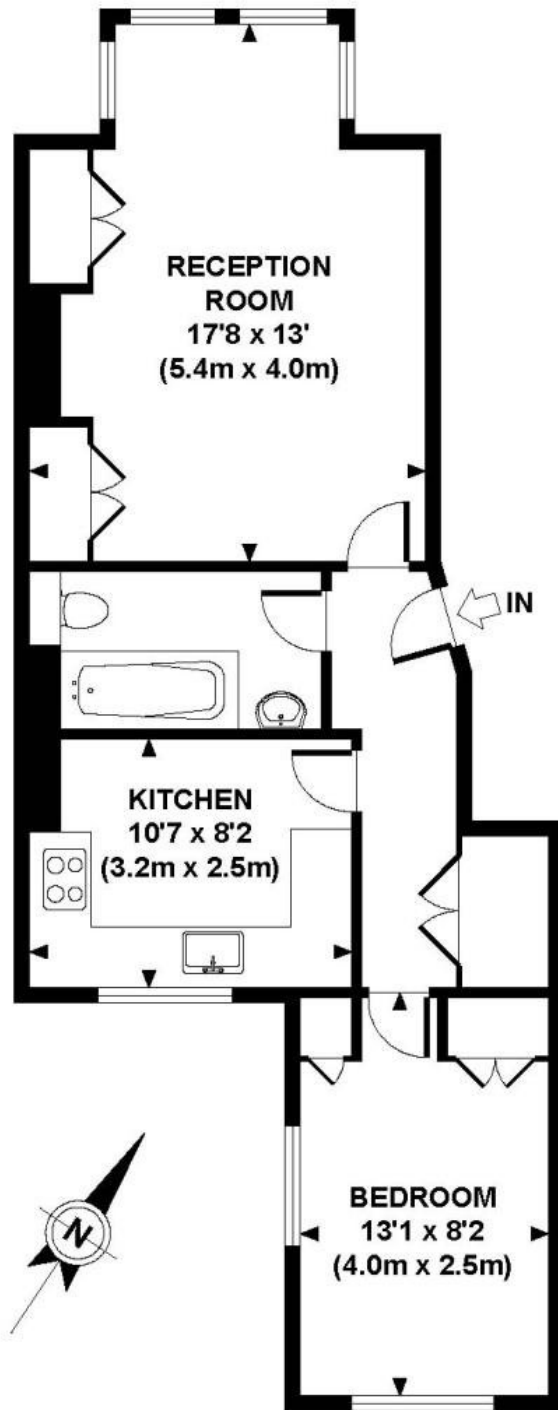
TENURE
Share of Freehold.

PRICE: £535,000 Share of Freehold



Energy Efficiency Rating		
	Current	Potential
Very energy efficient - lower running costs		
(92+) A		
(81-91) B		
(69-80) C	74	80
(55-68) D		
(39-54) E		
(21-38) F		
(1-20) G		
Not energy efficient - higher running costs		
England, Scotland & Wales	EU Directive 2002/91/EC	

NETHERWOOD ROAD



**RAISED GROUND FLOOR
GROSS INTERNAL
FLOOR AREA 557 SQ FT**

The displayed square footage is taken from the floor plans with measurements created using the Royal Institute of Chartered Surveyors' Code of Practice for Measuring. These measurements are approximate and included for illustrative purposes only. Winkworth does not make any representation as to the accuracy of these measurements and you should seek to verify them for yourself. Winkworth accept no liability for any loss you may suffer if you rely on these measurements.

Hammersmith | 0207 371 4466 | hammersmith@winkworth.co.uk

Winkworth

for every step...

Under the Property Misdescriptions Act 1991, these Particulars are a guide and act as information only. All details are given in good faith and are believed to be correct at time of printing. Winkworth give no representation as to their accuracy and potential purchasers or tenants must satisfy themselves by inspection or otherwise as to their correctness. No employee of Winkworth has authority to make or give any representation or warranty in relation to this property.