



LEET COURT, MILTON GROVE, LONDON, N16
£550,000 LEASEHOLD

**A CHARMING SPLIT LEVEL, TWO BEDROOM
APARTMENT WITH PRIVATE TRANQUIL GARDEN.**

Stoke Newington | | stokenewington@winkworth.co.uk

Winkworth

winkworth.co.uk

See things differently



DESCRIPTION:

This well-presented property boasts plentiful indoor and outdoor space, making it an ideal retreat for professionals, couples, or small families. Accessed via the private front garden, the living space is bright and airy and the property has been tastefully designed to maximise natural light. The open-plan layout connects the lounge area to a modern kitchen, complete with high-quality appliances and ample storage, catering to all your culinary needs. Located on the first floor, the two generous double-bedrooms boast ample space for storage alongside furniture, and the family bathroom is designed with contemporary fixtures and finishes. One of the standout features of this property is the private garden. Designed with an array of trees and shrubbery alongside paved areas, the outdoor oasis is perfect for entertaining or simply relaxing.

Leet Court is ideally situated in the vibrant community of Stoke Newington, a neighbourhood known for its eclectic character and strong sense of community. There are a wealth of amenities, including trendy cafes, restaurants, and boutique shops. Nearby landmarks such as Stoke Newington Church Street and Clissold Park offer opportunities for leisure and relaxation. Excellent transport and bus links are readily available, with Stoke Newington Overground just 1 mile away.

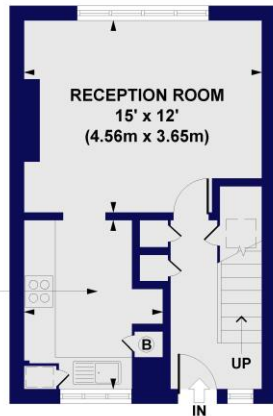
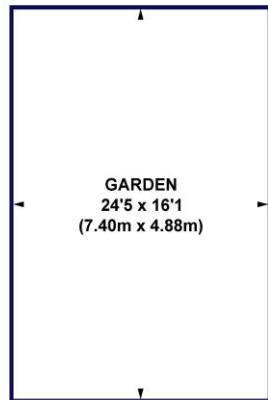
Any associated charges including, but not limited to, service charge, ground rent and sinking funds outlined in the marketing material is an approximation calculated using information provided by and described by the client at the time of instruction. The actual cost may be subject to change and therefore we recommend all interested parties carry out their own enquiries.

Winkworth

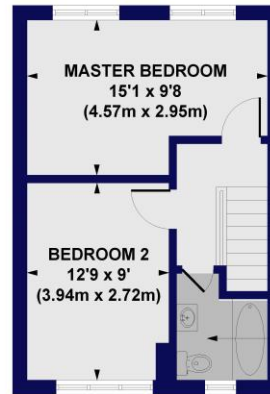


Winkworth

Leet Court, Milton Grove, N16
Approx. Gross Internal Floor Area 692 sq. ft / 64.26 sq. m



GROUND FLOOR
GROSS INTERNAL
FLOOR AREA 344 SQ FT

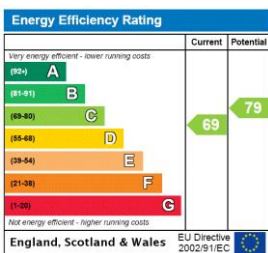


FIRST FLOOR
GROSS INTERNAL
FLOOR AREA 348 SQ FT

All measurements of walls, doors, windows, fittings and appliances, including their size and location, are shown as standard sizes and do not constitute any warranty or representation by the seller, their agent or CP Creative. Any intending purchaser must satisfy himself by inspection or otherwise as to the correctness of the information contained in these plans. This plan is for illustrative purposes only and should be used as such by any prospective purchasers.

Winkworth

This floorplan is for illustration purposes only and is not to scale. The position and size of doors, windows, appliances and other features are approximate.



Stoke Newington | | stokenewington@winkworth.co.uk



winkworth.co.uk

See things differently

Winkworth wishes to inform prospective buyers and tenants that these particulars are a guide and act as information only. All our details are given in good faith and believed to be correct at the time of printing but they don't form part of an offer or contract. No Winkworth employee has authority to make or give any representation or warranty in relation to this property. All fixtures and fittings, whether fitted or not are deemed removable by the vendor unless stated otherwise and room sizes are measured between internal wall surfaces, including furnishings.