



SALFORD ROAD, SW2
£650,000 LEASEHOLD

ELEGANT VICTORIAN CONVERSION WITH A PRIVATE GARDEN OFFERED CHAIN FREE

Streatham | 020 8769 6699 | streatham@winkworth.co.uk

Winkworth

for every step...

winkworth.co.uk



DESCRIPTION

Offered chain free is this stunning Victorian conversion offers an idyllic blend of period charm and contemporary comfort. Set on a sought-after residential street, the property is moments from Streatham Hill, with convenient access to Balham and Brixton, and just a short walk from the lush open spaces of Tooting Bec Common.

As you enter this delightful ground-floor apartment, you are greeted by a spacious reception room, featuring high ceilings, original cornicing, and a striking bay window adorned with plantation shutters, flooding the room with natural light. The stylish decor is complemented by bespoke built-in shelving and a feature fireplace, making it a perfect space for entertaining or relaxing.

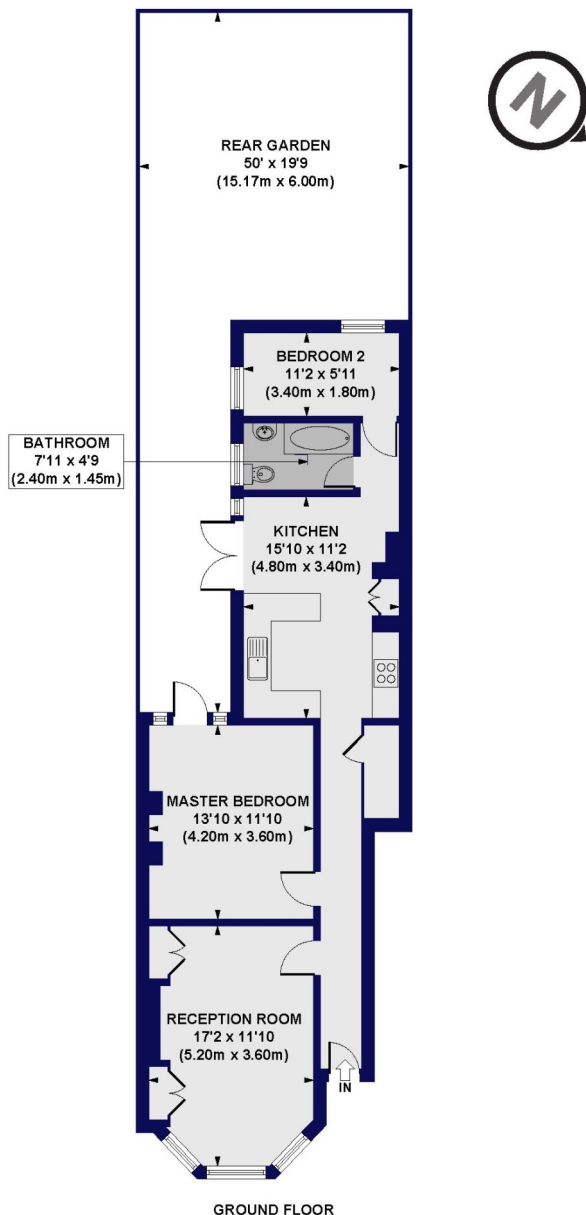
The heart of the home is the impressive open-plan kitchen and dining area, complete with shaker-style cabinetry, solid wood worktops, and a breakfast bar. French doors lead out to a private 50-foot garden—a true oasis with a decked seating area, a lawn, and mature shrubs, ideal for alfresco dining and summer gatherings.

The generous master bedroom is tastefully designed, with calming tones and an original fireplace, while the second bedroom offers a versatile space that could serve as a home office or guest room. The bathroom is well-appointed with contemporary fixtures and fittings.

This exceptional property benefits from excellent transport links to central London, with Streatham Hill Station and local bus routes nearby. The vibrant "Abbeville Village," with its boutique shops and eateries, is within easy reach, as is a local private members' tennis club for leisure pursuits.



Salford Road, SW2
Approx. Gross Internal Floor Area 771 sq. ft / 71.59 sq. m



All measurements of walls, doors, windows, fittings and appliances, including their size and location, are shown as standard sizes and do not constitute any warranty or representation by the seller, their agent or CP Creative. Any intending purchaser must satisfy himself by inspection or otherwise as to the correctness of the information contained in these plans. This plan is for illustrative purposes only and should be used as such by any prospective purchasers.

Winkworth

This floorplan is for illustration purposes only and is not to scale. The position and size of doors, windows, appliances and other features are approximate.

Tenure: Leasehold

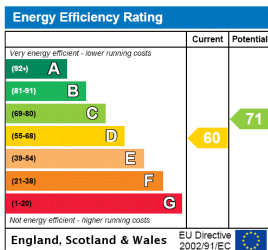
Term: 165 year and 1 months

Service Charge: £0 per annum

Ground Rent: £ 0 Annually (subject to increase)

Council Tax Band: D

Where no figures are shown, we have been unable to ascertain the information. All figures that are shown were correct at the time of printing.



Streatham | 020 8769 6699 | streatham@winkworth.co.uk



for every step...

winkworth.co.uk

Winkworth wishes to inform prospective buyers and tenants that these particulars are a guide and act as information only. All our details are given in good faith and believed to be correct at the time of printing but they don't form part of an offer or contract. No Winkworth employee has authority to make or give any representation or warranty in relation to this property. All fixtures and fittings, whether fitted or not are deemed removable by the vendor unless stated otherwise and room sizes are measured between internal wall surfaces, including furnishings.